

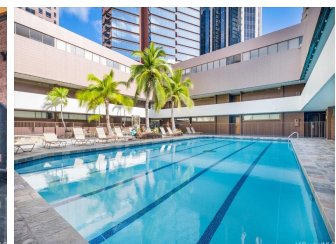
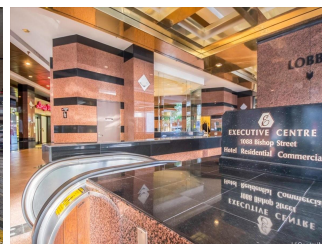
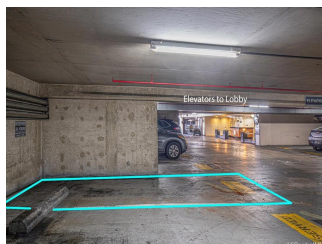
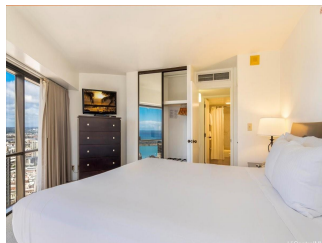
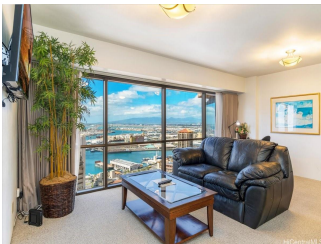
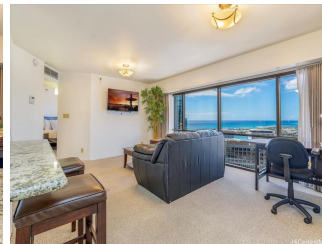
Executive Centre 1088 Bishop Street Unit 3706, Honolulu 96813 * \$628,000

Beds: 1	MLS#: 202411074, FS	Year Built: 1984
Bath: 1/0	Status: Active	Remodeled: 2016
Living Sq. Ft.: 798	List Date & DOM: 05-13-2024 & 65	Total Parking: 1
Land Sq. Ft.: 0	Condition: Above Average	Assessed Value
Lanai Sq. Ft.: 0	Frontage:	Building: \$375,900
Sq. Ft. Other: 0	Tax/Year: \$450/2024	Land: \$48,800
Total Sq. Ft. 798	Neighborhood: Downtown	Total: \$424,700
Maint./Assoc. \$1,357 / \$0	Flood Zone : Zone X - Tool	Stories / CPR: 21+ / No
Parking: Assigned, Covered - 1, Secured Entry	Frontage:	

Zoning: 34 - BMX-4 Central Business Mix

View: City, Coastline, Ocean

Public Remarks: THE ONLY LEGAL SHORT-TERM DAILY RENTAL CONDO-HOTEL in the heart of the downtown Honolulu district. This tower suite largest 1-bedroom/1-bath floorplan offers a separate foyer entrance, floor-to-ceiling glass windows, upgraded full kitchen and bath, washer/dryer, central AC, and comes fully furnished including 1 assigned covered parking stall. Enjoy the high floor views of the Honolulu harbor, coastline, ocean and the brilliant colors of city lights. Great flexible mix use as rental and/or enjoy as a vacation or primary home and/or simply as a office living suite. Executive Centre is a reputable mixed use condo-hotel/office building conveniently located in short distances to offices, Hawaii Pacific University, eateries, art galleries, night market festivals, historic Chinatown, medical facilities, shopping centers, bus-lines, freeway access & many more essentials of the Honolulu's Downtown district. Maintenance fee includes cable TV, internet, (hot) water, sewer, common area expenses and capital reserves. **Sale Conditions:** None **Schools:** [Royal](#), [Keelikolani](#), [Mckinley](#) * [Request Showing, Photos, History, Maps, Deed, Watch List, Tax Info](#)





Address	Price	Bd & Bth	Living / Avg.	Land Avg.	DOM
1088 Bishop Street 3706	\$628,000	1 & 1/0	798 \$787	0 \$inf	65

Address	Tax Maint. Ass.	Assessed Land	Assessed Building	Assessed Total	Ratio	Year & Remodeled
1088 Bishop Street 3706	\$450 \$1,357 \$0	\$48,800	\$375,900	\$424,700	148%	1984 & 2016

[1088 Bishop Street 3706](#) - MLS#: [202411074](#) - THE ONLY LEGAL SHORT-TERM DAILY RENTAL CONDO-HOTEL in the heart of the downtown Honolulu district. This tower suite largest 1-bedroom/1-bath floorplan offers a separate foyer entrance, floor-to-ceiling glass windows, upgraded full kitchen and bath, washer/dryer, central AC, and comes fully furnished including 1 assigned covered parking stall. Enjoy the high floor views of the Honolulu harbor, coastline, ocean and the brilliant colors of city lights. Great flexible mix use as rental and/or enjoy as a vacation or primary home and/or simply as a office living suite. Executive Centre is a reputable mixed use condo-hotel/office building conveniently located in short distances to offices, Hawaii Pacific University, eateries, art galleries, night market festivals, historic Chinatown, medical facilities, shopping centers, bus-lines, freeway access & many more essentials of the Honolulu's Downtown district. Maintenance fee includes cable TV, internet, (hot) water, sewer, common area expenses and capital reserves. **Region:** Metro **Neighborhood:** Downtown **Condition:** Above Average **Parking:** Assigned, Covered - 1, Secured Entry **Total Parking:** 1 **View:** City, Coastline, Ocean **Frontage:** **Pool:** **Zoning:** 34 - BMX-4 Central Business Mix **Sale Conditions:** None **Schools:** [Royal, Keelikolani, Mckinley](#) * [Request Showing](#), [Photos](#), [History](#), [Maps](#), [Deed](#), [Watch List](#), [Tax Info](#)

DOM = Days on Market