

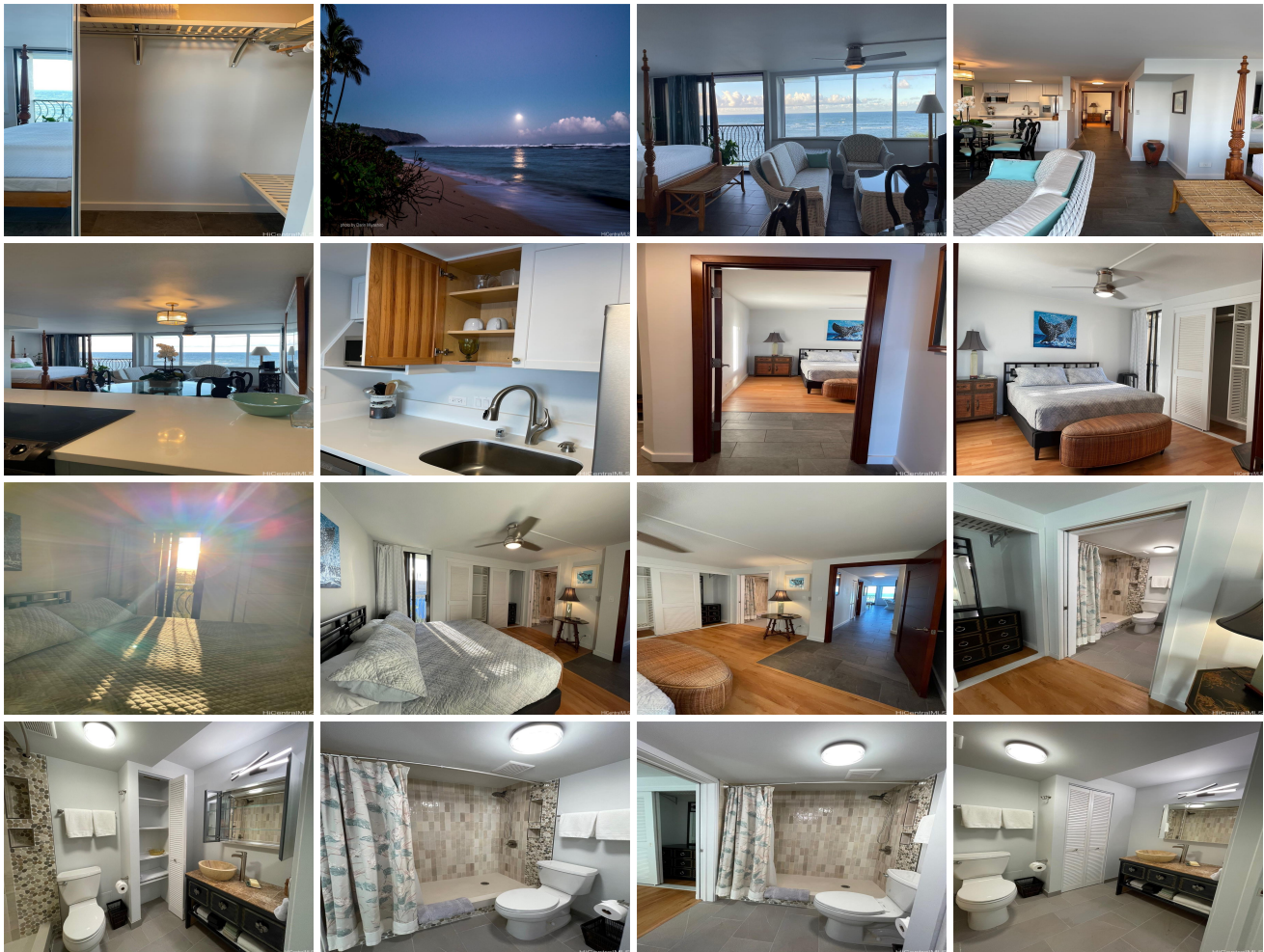
**Sunset Shores 68-121 Au Street Unit 501, Waialua 96791 \* Sunset Shores \* \$1,149,000**

Beds: <b>2</b>	MLS#: <b>202411075, FS</b>	Year Built: <b>1982</b>
Bath: <b>2/0</b>	Status: <b>Active</b>	Remodeled: <b>2023</b>
Living Sq. Ft.: <b>981</b>	List Date & DOM: <b>05-10-2024 &amp; 50</b>	Total Parking: <b>1</b>
Land Sq. Ft.: <b>22,346</b>	Condition: <b>Excellent</b>	<a href="#">Assessed Value</a>
Lanai Sq. Ft.: <b>0</b>	Frontage: <b>Ocean, Other, Sandy Beach</b>	Building: <b>\$705,300</b>
Sq. Ft. Other: <b>0</b>	Tax/Year: <b>\$186/2023</b>	Land: <b>\$72,900</b>
Total Sq. Ft. <b>981</b>	Neighborhood: <b>Waialua</b>	Total: <b>\$778,200</b>
Maint./Assoc. <b>\$1,199 / \$0</b>	<a href="#">Flood Zone</a> : <b>Zone VE - Tool</b>	Stories / CPR: <b>4-7 / No</b>
Parking: <b>Assigned, Covered - 2, Guest, Other, Secured Entry, Street</b>	Frontage: <b>Ocean, Other, Sandy Beach</b>	

[Zoning](#): **12 - A-2 Medium Density Apartme**

View: **Coastline, Garden, Mountain, Ocean, Other, Sunrise, Sunset**

**Public Remarks:** Stunning peaceful hues of ocean colors on the most private end of the beach at Sunset Shores a 32 unit condominium building with private beach access to the best snorkeling beach. Open space BBQ dining and sitting area on the lawn, pool, spa, winter Whale watching, ensemble of pro-board & foil surfers from a popular surf spot in front, turtle watching and sea life all year long. Penthouse two bedrooms on opposite ends of the condo with one en-suite, and 2nd full bathroom. Galley kitchen, jalousie vents fronting bay windows, virtual lanai - floor to ceiling sliding glass doors to enjoy the gentle trade winds. Spectacular sunrise from the 08 end of the building to sunsets on the 01 end - this is your rare opportunity to live on a sandy beach all year long, where you may encounter a napping Hawai'ian Monk Seal or beached turtle (look but please do not disturb). Near bus line, horse stable, sky diving, The Waialua Shopping Center with delicious eateries, Mui's exotic grocery store, hair salon, Historic Hale'iwa Town near bus line, restaurant, shops, banks, dentists, doctors, CVS, Malama Market, Ace Hardware Store, North Shore Chamber of Commerce walking tours, and more. **Sale Conditions:** None **Schools:** [Waialua, Waialua, Waialua](#) \* [Request Showing](#), [Photos](#), [History](#), [Maps](#), [Deed](#), [Watch List](#), [Tax Info](#)





Address	Price	Bd & Bth	Living / Avg.	Land   Avg.	Lanai	Occ.	FL	DOM
<a href="#">68-121 Au Street 501</a>	<a href="#">\$1,149,000</a>	2 & 2/0	981   \$1,171	22,346   \$51	0	40%	5	50

Address	Tax   Maint.   Ass.	Assessed Land	Assessed Building	Assessed Total	Ratio	Year & Remodeled
<a href="#">68-121 Au Street 501</a>	\$186   \$1,199   \$0	\$72,900	\$705,300	\$778,200	148%	1982 & 2023

[68-121 Au Street 501](#) - MLS#: [202411075](#) - Stunning peaceful hues of ocean colors on the most private end of the beach at Sunset Shores a 32 unit condominium building with private beach access to the best snorkeling beach. Open space BBQ dining and sitting area on the lawn, pool, spa, winter Whale watching, ensemble of pro-board & foil surfers from a popular surf spot in front, turtle watching and sea life all year long. Penthouse two bedrooms on opposite ends of the condo with one en-suite, and 2nd full bathroom. Galley kitchen, jalousie vents fronting bay windows, virtual lanai - floor to ceiling sliding glass doors to enjoy the gentle trade winds. Spectacular sunrise from the 08 end of the building to sunsets on the 01 end - this is your rare opportunity to live on a sandy beach all year long, where you may encounter a napping Hawai'ian Monk Seal or beached turtle (look but please do not disturb). Near bus line, horse stable, sky diving, The Waialua Shopping Center with delicious eateries, Mui's exotic grocery store, hair salon, Historic Hale'iwa Town near bus line, restaurant, shops, banks, dentists, doctors, CVS, Malama Market, Ace Hardware Store, North Shore Chamber of Commerce walking tours, and more.

**Region:** North Shore **Neighborhood:** Waialua **Condition:** Excellent **Parking:** Assigned, Covered - 2, Guest, Other, Secured Entry, Street **Total Parking:** 1 **View:** Coastline, Garden, Mountain, Ocean, Other, Sunrise, Sunset **Frontage:** Ocean, Other, Sandy Beach **Pool:** **Zoning:** 12 - A-2 Medium Density Apartme **Sale Conditions:** None **Schools:** [Waialua](#), [Waialua](#), [Waialua](#) \* [Request Showing](#), [Photos](#), [History](#), [Maps](#), [Deed](#), [Watch List](#), [Tax Info](#)

DOM = Days on Market, Occ. = Occupancy, FL = Floor Number