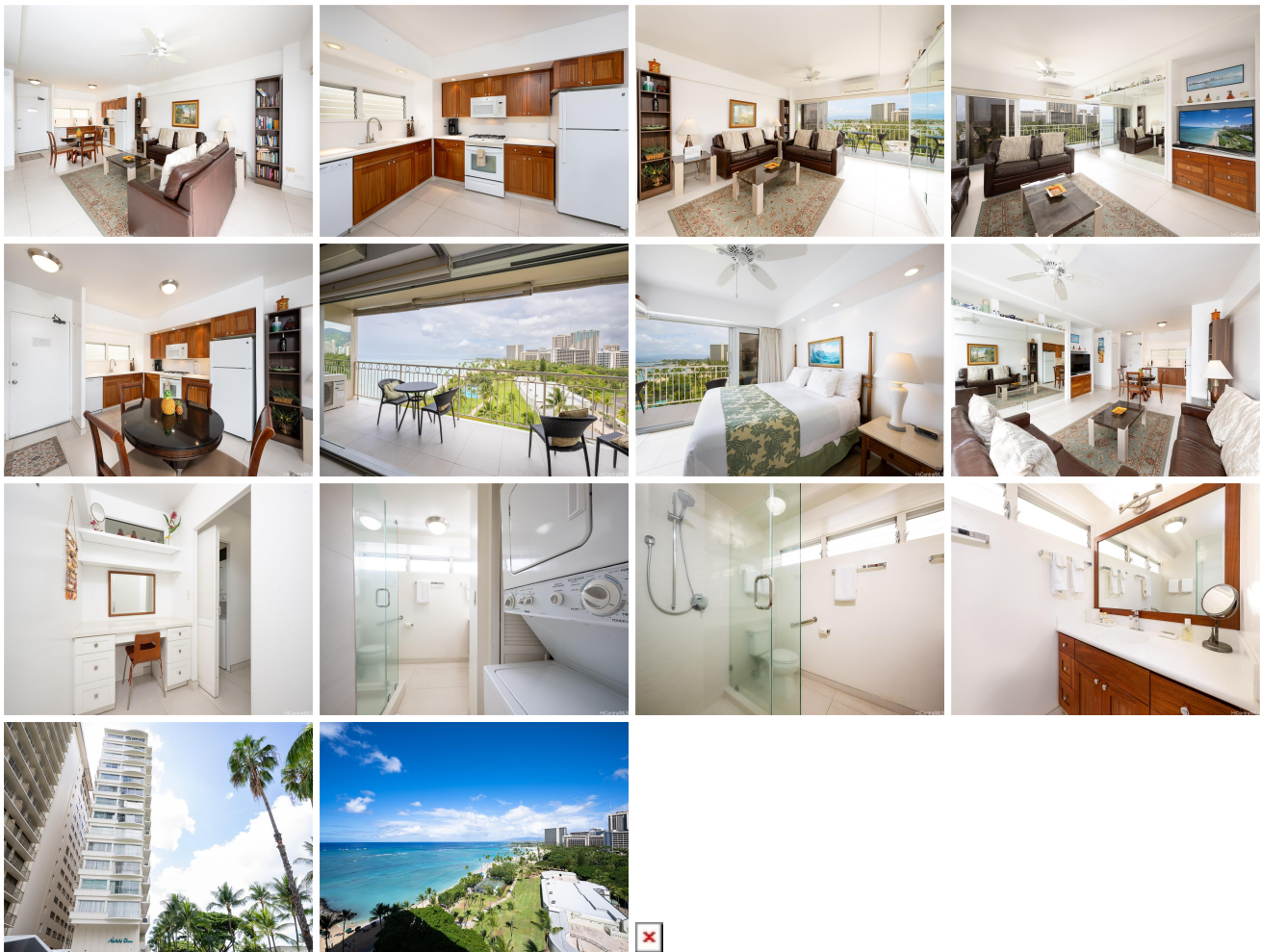


**Waikiki Shore 2161 Kalia Road Unit 906, Honolulu 96815 \* Waikiki Shore \* \$2,200,000**

Beds: <b>1</b>	MLS#: <b>202411117, FS</b>	Year Built: <b>1960</b>
Bath: <b>1/0</b>	Status: <b>Active</b>	Remodeled: <b>2019</b>
Living Sq. Ft.: <b>706</b>	List Date & DOM: <b>05-12-2024 &amp; 49</b>	Total Parking: <b>0</b>
Land Sq. Ft.: <b>26,397</b>	Condition: <b>Excellent</b>	<a href="#">Assessed Value</a>
Lanai Sq. Ft.: <b>124</b>	Frontage:	Building: <b>\$1,815,700</b>
Sq. Ft. Other: <b>0</b>	Tax/Year: <b>\$496/2023</b>	Land: <b>\$24,400</b>
Total Sq. Ft. <b>830</b>	Neighborhood: <b>Waikiki</b>	Total: <b>\$1,840,100</b>
Maint./Assoc. <b>\$425 / \$0</b>	<a href="#">Flood Zone</a> : <b>Zone AE - Tool</b>	Stories / CPR: <b>8-14 / No</b>
Parking: <b>None</b>	Frontage:	
<a href="#">Zoning</a> : <b>X6 - Resort Mixed Use Precinct</b>	View: <b>City, Coastline, Mountain, Ocean</b>	

**Public Remarks:** Enjoy the views from the only condo on Waikiki Beach! Rarely available high floor 1bed/1bath. Don't miss out on this special opportunity to own an ocean front condo with an unobstructed Diamond Head view out your front door and endless sunsets from your lanai. You will also have a perfect view of the Hilton Friday fireworks! The condo is tastefully decorated with quality furnishings. There's also a 6 x 8 ft. personal storage locker next to the unit. **Sale Conditions:** None  
**Schools:** [Jefferson](#), [Washington](#), [Kaimuki](#) \* [Request Showing](#), [Photos](#), [History](#), [Maps](#), [Deed](#), [Watch List](#), [Tax Info](#)



Address	Price	Bd & Bth	Living / Avg.	Land   Avg.	Lanai	Occ.	FL	DOM
<a href="#">2161 Kalia Road 906</a>	<a href="#">\$2,200,000</a>	1 & 1/0	706   \$3,116	26,397   \$83	124	10%	9	49

Address	Tax   Maint.   Ass.	Assessed Land	Assessed Building	Assessed Total	Ratio	Year & Remodeled
<a href="#">2161 Kalia Road 906</a>	\$496   \$425   \$0	\$24,400	\$1,815,700	\$1,840,100	120%	1960 & 2019

[2161 Kalia Road 906](#) - MLS#: [202411117](#) - Enjoy the views from the only condo on Waikiki Beach! Rarely available high floor 1bed/1bath. Don't miss out on this special opportunity to own an ocean front condo with an unobstructed Diamond Head view out your front door and endless sunsets from your lanai. You will also have a perfect view of the Hilton Friday fireworks! The condo is tastefully decorated with quality furnishings. There's also a 6 x 8 ft. personal storage locker next to the unit. **Region:** Metro **Neighborhood:** Waikiki **Condition:** Excellent **Parking:** None **Total Parking:** 0 **View:** City, Coastline, Mountain, Ocean **Frontage:** Pool: **Zoning:** X6 - Resort Mixed Use Precinct **Sale Conditions:** None **Schools:** [Jefferson](#), [Washington](#), [Kaimuki](#) \* [Request Showing](#), [Photos](#), [History](#), [Maps](#), [Deed](#), [Watch List](#), [Tax Info](#)

DOM = Days on Market, Occ. = Occupancy, FL = Floor Number