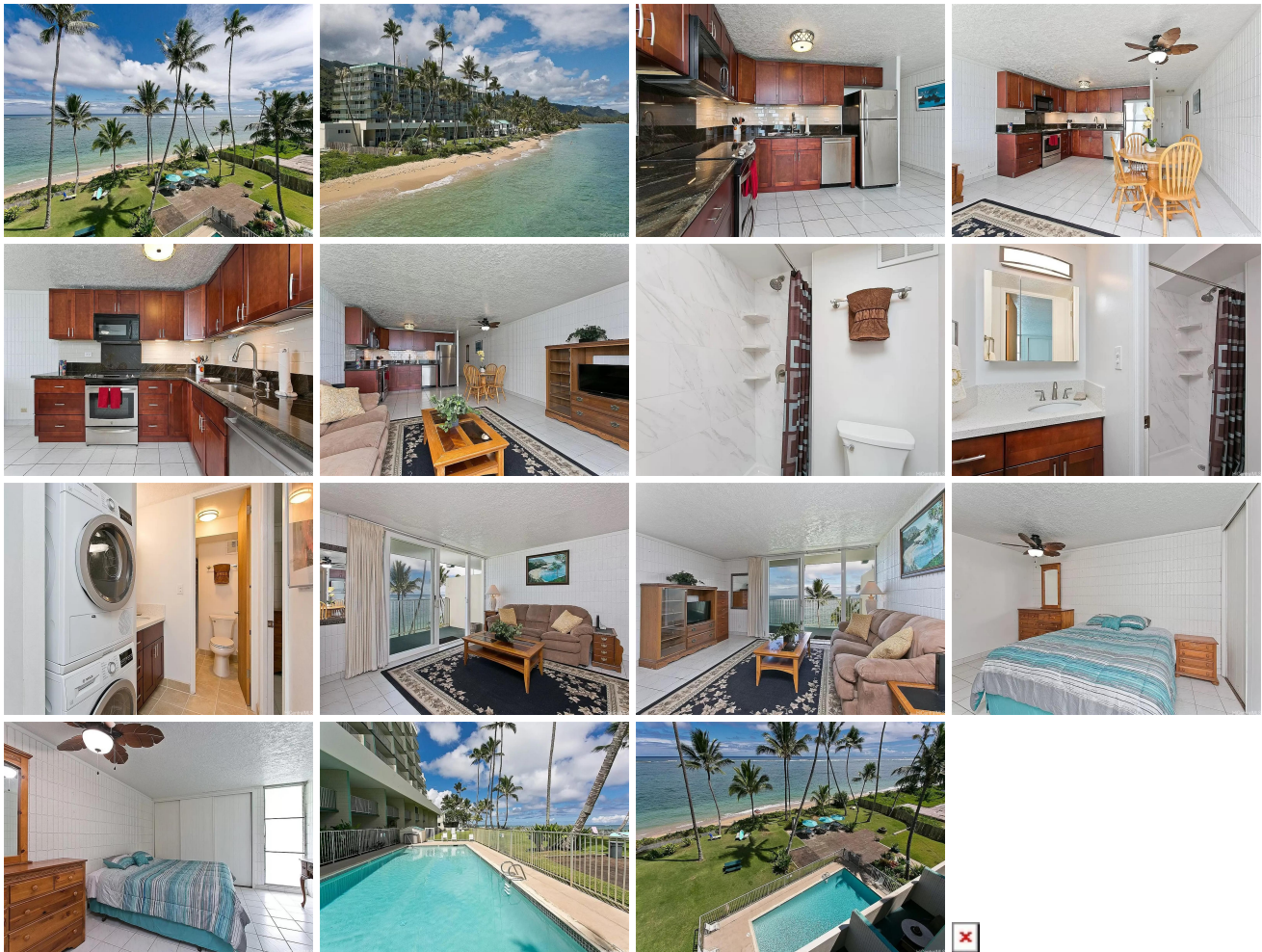


Pats At Punaluu 53-567 Kamehameha Highway Unit 513, Hauula 96717 * Pats At Punaluu *

\$520,950

Beds: 1	MLS#: 202411225, FS	Year Built: 1975
Bath: 1/0	Status: Active	Remodeled: 2019
Living Sq. Ft.: 726	List Date & DOM: 05-18-2024 & 41	Total Parking: 1
Land Sq. Ft.: 823	Condition: Above Average	Assessed Value
Lanai Sq. Ft.: 97	Frontage: Ocean, Sandy Beach	Building: \$435,700
Sq. Ft. Other: 0	Tax/Year: \$145/2024	Land: \$62,400
Total Sq. Ft. 823	Neighborhood: Punaluu	Total: \$498,100
Maint./Assoc. \$1,239 / \$0	Flood Zone : Zone X - Tool	Stories / CPR: One / No
Parking: Assigned, Guest, Open - 1, Street	Frontage: Ocean, Sandy Beach	
Zoning : 12 - A-2 Medium Density Apartme	View: Coastline, Garden, Mountain, Ocean, Sunrise	

Public Remarks: Pat's at Punaluu #513, 5th-floor BEACH FRONT on Hawaii's North East Shore, is a perfect spot to relax and enjoy a true paradise. Recently upgraded kitchen and bathroom. This is a full one-bedroom with a king bed, new stove, dishwasher, tankless water heater, washer/dryer, and assigned parking. The oceanfront lanai is ideal for relaxing Hawaiian Style while enjoying the cooling trade winds and a spectacular view of over 2500 miles of fresh air. Oceanfront living. Get away to the country. Located 25 minutes from Kaneohe Town and 25 minutes from Haleiwa Town. Happiness is living right on the beach. **Sale Conditions:** None **Schools:** [Hauula](#), [Kahuku](#), [Kahuku](#) * [Request Showing](#), [Photos](#), [History](#), [Maps](#), [Deed](#), [Watch List](#), [Tax Info](#)



Address	Price	Bd & Bth	Living / Avg.	Land Avg.	Lanai	Occ.	FL	DOM
53-567 Kamehameha Highway 513	\$520,950	1 & 1/0	726 \$718	823 \$633	97	42%	5	41

Address	Tax Maint. Ass.	Assessed Land	Assessed Building	Assessed Total	Ratio	Year & Remodeled
53-567 Kamehameha Highway 513	\$145 \$1,239 \$0	\$62,400	\$435,700	\$498,100	105%	1975 & 2019

[53-567 Kamehameha Highway 513](#) - MLS#: [202411225](#) - Pat's at Punaluu #513, 5th-floor BEACH FRONT on Hawaii's North East Shore, is a perfect spot to relax and enjoy a true paradise. Recently upgraded kitchen and bathroom. This is a full one-bedroom with a king bed, new stove, dishwasher, tankless water heater, washer/dryer, and assigned parking. The oceanfront lanai is ideal for relaxing Hawaiian Style while enjoying the cooling trade winds and a spectacular view of over 2500 miles of fresh air. Oceanfront living. Get away to the country. Located 25 minutes from Kaneohe Town and 25 minutes from Haleiwa Town. Happiness is living right on the beach. **Region:** Kaneohe **Neighborhood:** Punaluu **Condition:** Above Average **Parking:** Assigned, Guest, Open - 1, Street **Total Parking:** 1 **View:** Coastline, Garden, Mountain, Ocean, Sunrise **Frontage:** Ocean, Sandy Beach **Pool:** **Zoning:** 12 - A-2 Medium Density Apartme **Sale Conditions:** None **Schools:** [Hauula](#), [Kahuku](#), [Kahuku](#) * [Request Showing](#), [Photos](#), [History](#), [Maps](#), [Deed](#), [Watch List](#), [Tax Info](#)

DOM = Days on Market, Occ. = Occupancy, FL = Floor Number