

Windward Passage 322 Aoloa Street Unit 1402, Kailua 96734 * Windward Passage *

\$1,200,000

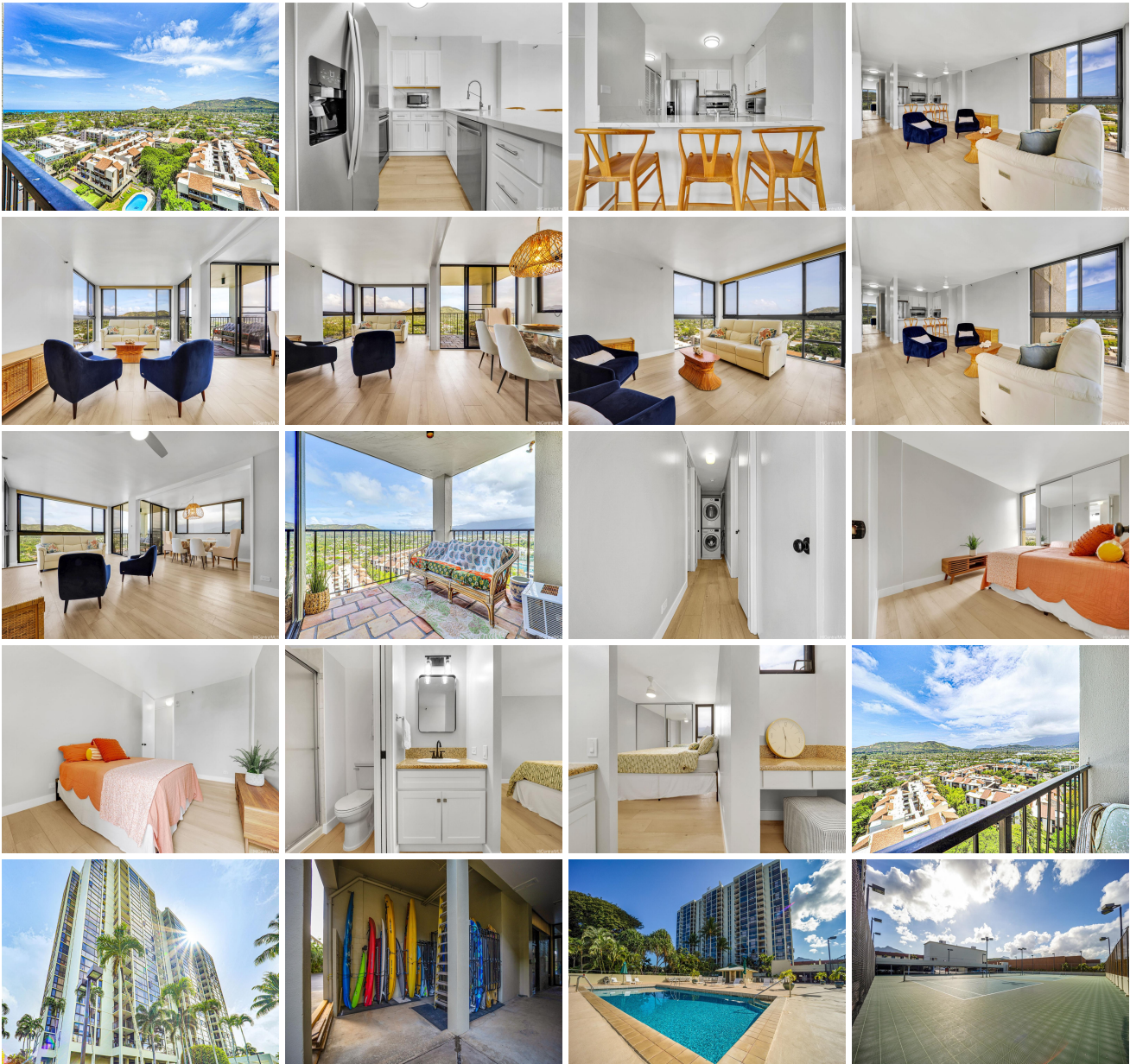
Beds: **3**
Bath: **2/0**
Living Sq. Ft.: **1,286**
Land Sq. Ft.: **134,600**
Lanai Sq. Ft.: **98**
Sq. Ft. Other: **0**
Total Sq. Ft. **1,384**
Maint./Assoc. **\$1,008 / \$0**
Parking: **Covered - 2, Street**
Zoning: 12 - A-2 Medium Density Apartme

MLS#: **202411296, FS**
Status: **Active**
List Date & DOM: **05-15-2024 & 63**
Condition: **Excellent**
Frontage:
Tax/Year: **\$340/2023**
Neighborhood: **Kailua Town**
Flood Zone: Zone X - Tool

Year Built: **1979**
Remodeled: **2024**
Total Parking: **2**
[Assessed Value](#)
Building: **\$883,300**
Land: **\$125,300**
Total: **\$1,008,600**
Stories / CPR: / **No**

Frontage:
View: **Mountain, Ocean, Sunrise**

Public Remarks: Welcome to your dream home in Kailua. This stunning high floor 3 bed 2 bath unit has been thoroughly remodeled offering a perfect blend of both modern elegance and comfort. This flexible floor plan currently utilizes the 3rd bedroom as an open dining area. This could easily be used as a bedroom again or as an office or den. Step inside to experience the breathtaking (rare) views of all of Kailua expanding from the majestic mountains to the sparkling ocean and even the lake and Lanikai hillside. The open and airy (lanai) layout enhances the sense of space and tranquility, making it your ideal retreat yet steps away from all that Kailua town has to offer (beaches, eateries, shopping, and more). This coveted end unit enjoys extra privacy and natural light from multiple directions. Windward Passage boasts a wealth of amenities designed to enrich your lifestyle, including a refreshing pool, well appointed party/rec room, and gym. Includes two secure parking stalls and a storage unit. This meticulously updated home has just been thoughtfully updated so that is is ready for you to move right in and start enjoying the best of Kailua living. A perfect primary residence or second home. **Sale Conditions:** None **Schools:** , , * [Request Showing](#), [Photos](#), [History](#), [Maps](#), [Deed](#), [Watch List](#), [Tax Info](#)





Address	Price	Bd & Bth	Living / Avg.	Land Avg.	Lanai	Occ.	FL	DOM
322 Aoloa Street 1402	\$1,200,000	3 & 2/0	1,286 \$933	134,600 \$9	98	51%	14	63

Address	Tax Maint. Ass.	Assessed Land	Assessed Building	Assessed Total	Ratio	Year & Remodeled
322 Aoloa Street 1402	\$340 \$1,008 \$0	\$125,300	\$883,300	\$1,008,600	119%	1979 & 2024

[322 Aoloa Street 1402](#) - MLS#: [202411296](#) - Welcome to your dream home in Kailua. This stunning high floor 3 bed 2 bath unit has been thoroughly remodeled offering a perfect blend of both modern elegance and comfort. This flexible floor plan currently utilizes the 3rd bedroom as an open dining area. This could easily be used as a bedroom again or as an office or den. Step inside to experience the breathtaking (rare) views of all of Kailua expanding from the majestic mountains to the sparkling ocean and even the lake and Lanikai hillside. The open and airy (lanai) layout enhances the sense of space and tranquility, making it your ideal retreat yet steps away from all that Kailua town has to offer (beaches, eateries, shopping, and more). This coveted end unit enjoys extra privacy and natural light from multiple directions. Windward Passage boasts a wealth of amenities designed to enrich your lifestyle, including a refreshing pool, well appointed party/rec room, and gym. Includes two secure parking stalls and a storage unit. This meticulously updated home has just been thoughtfully updated so that is is ready for you to move right in and start enjoying the best of Kailua living. A perfect primary residence or second home. **Region:** Kailua **Neighborhood:** Kailua Town **Condition:** Excellent **Parking:** Covered - 2, Street **Total Parking:** 2 **View:** Mountain, Ocean, Sunrise **Frontage:** **Pool:** **Zoning:** 12 - A-2 Medium Density Apartme **Sale Conditions:** None **Schools:** , , * [Request Showing](#), [Photos](#), [History](#), [Maps](#), [Deed](#), [Watch List](#), [Tax Info](#)

DOM = Days on Market, Occ. = Occupancy, FL = Floor Number