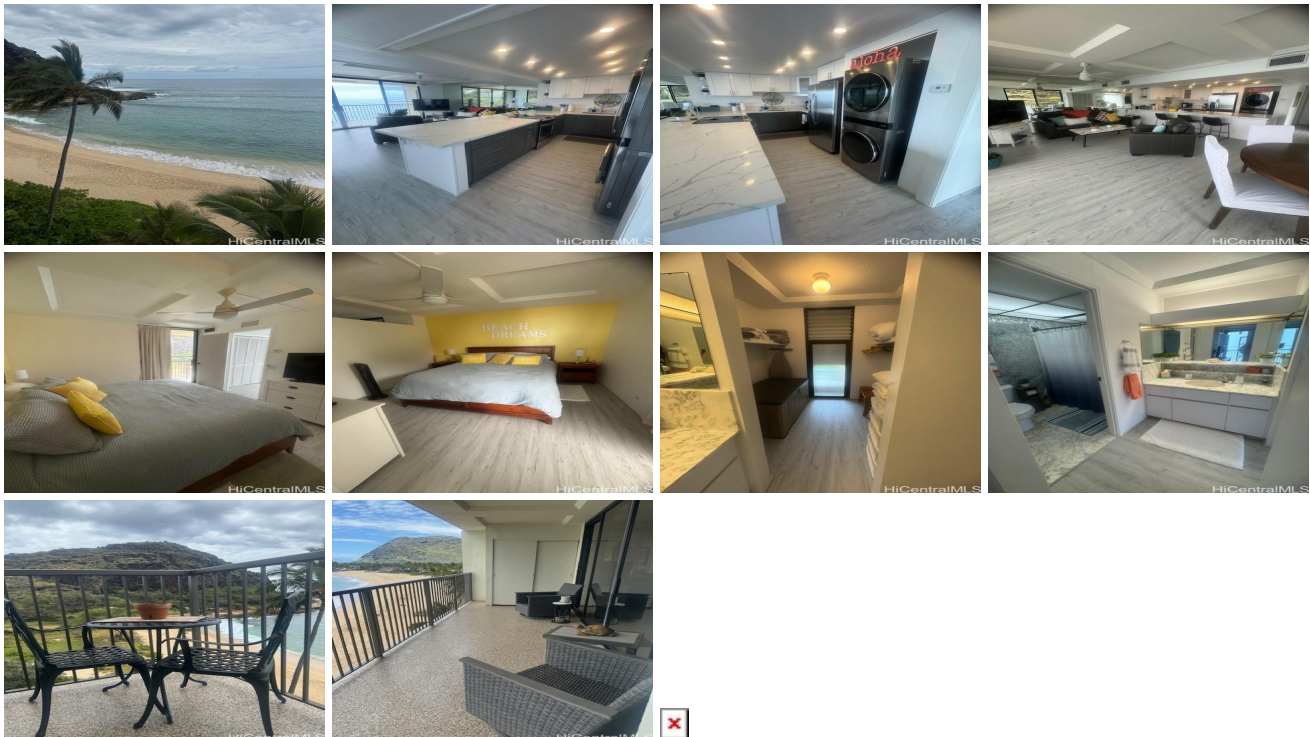


**Hawaiian Princess 84-1021 Lahilahi Street Unit 601, Waianae 96792 \* \$549,000**

|   |  |                                  |
|---|--|----------------------------------|
| Beds: <b>1</b>  | MLS#: <b>202411344, LH</b>                         | Year Built: <b>1980</b>          |
| Bath: <b>1/1</b>  | Status: <b>Active</b>                              | Remodeled: <b>2024</b>           |
| Living Sq. Ft.: <b>850</b>                                      | List Date & DOM: <b>05-20-2024 &amp; 32</b>        | Total Parking: <b>99</b>         |
| Land Sq. Ft.: <b>78,321</b>                                     | Condition: <b>Above Average</b>                    | <a href="#">Assessed Value</a>   |
| Lanai Sq. Ft.: <b>400</b>                                       | Frontage: <b>Ocean, Sandy Beach</b>                | Building: <b>\$643,900</b>       |
| Sq. Ft. Other: <b>0</b>   | Tax/Year: <b>\$196/2024</b>                        | Land: <b>\$28,300</b>            |
| Total Sq. Ft. <b>1,250</b>                                      | Neighborhood: <b>Makaha</b>                        | Total: <b>\$672,200</b>          |
| Maint./Assoc. <b>\$1,241 / \$0</b>                              | <a href="#">Flood Zone</a> : <b>Zone AE - Tool</b> | Stories / CPR: <b>15-20 / No</b> |
| Parking: <b>Open - 1, Secured Entry, Unassigned</b>             | Frontage: <b>Ocean, Sandy Beach</b>                |                                  |
| <a href="#">Zoning</a> : <b>12 - A-2 Medium Density Apartme</b> | View: <b>Coastline, Mountain, Ocean, Sunset</b>    |                                  |

**Public Remarks:** Own a piece of paradise in this beautiful upgraded corner unit. Majestic views everywhere you look. Open and spacious ready to move in. Easy to see. **Sale Conditions:** None **Schools:** , , \* [Request Showing](#), [Photos](#), [History](#), [Maps](#), [Deed](#), [Watch List](#), [Tax Info](#)



| Address                                     | Price               | Bd & Bth | Living / Avg. | Land   Avg.  | DOM |
|---|---------------------|----------|---------------|--------------|-----|
| <a href="#">84-1021 Lahilahi Street 601</a> | <b>\$549,000 LH</b> | 1 & 1/1  | 850   \$646   | 78,321   \$7 | 32  |

| Address                                     | Tax   Maint.   Ass.   | Assessed Land | Assessed Building | Assessed Total | Ratio | Year & Remodeled |
|---|-----------------------|---------------|-------------------|----------------|-------|------------------|
| <a href="#">84-1021 Lahilahi Street 601</a> | \$196   \$1,241   \$0 | \$28,300      | \$643,900         | \$672,200      | 82%   | 1980 & 2024      |

**[84-1021 Lahilahi Street 601](#) - MLS#: [202411344](#) - Own a piece of paradise in this beautiful upgraded corner unit. Majestic views everywhere you look. Open and spacious ready to move in. Easy to see. **Region:** Leeward **Neighborhood:** Makaha **Condition:** Above Average **Parking:** Open - 1, Secured Entry, Unassigned **Total Parking:** 99 **View:** Coastline, Mountain, Ocean, Sunset **Frontage:** Ocean,Sandy Beach **Pool:** **Zoning:** 12 - A-2 Medium Density Apartme **Sale Conditions:** None **Schools:** , , \* [Request Showing](#), [Photos](#), [History](#), [Maps](#), [Deed](#), [Watch List](#), [Tax Info](#)**

DOM = Days on Market