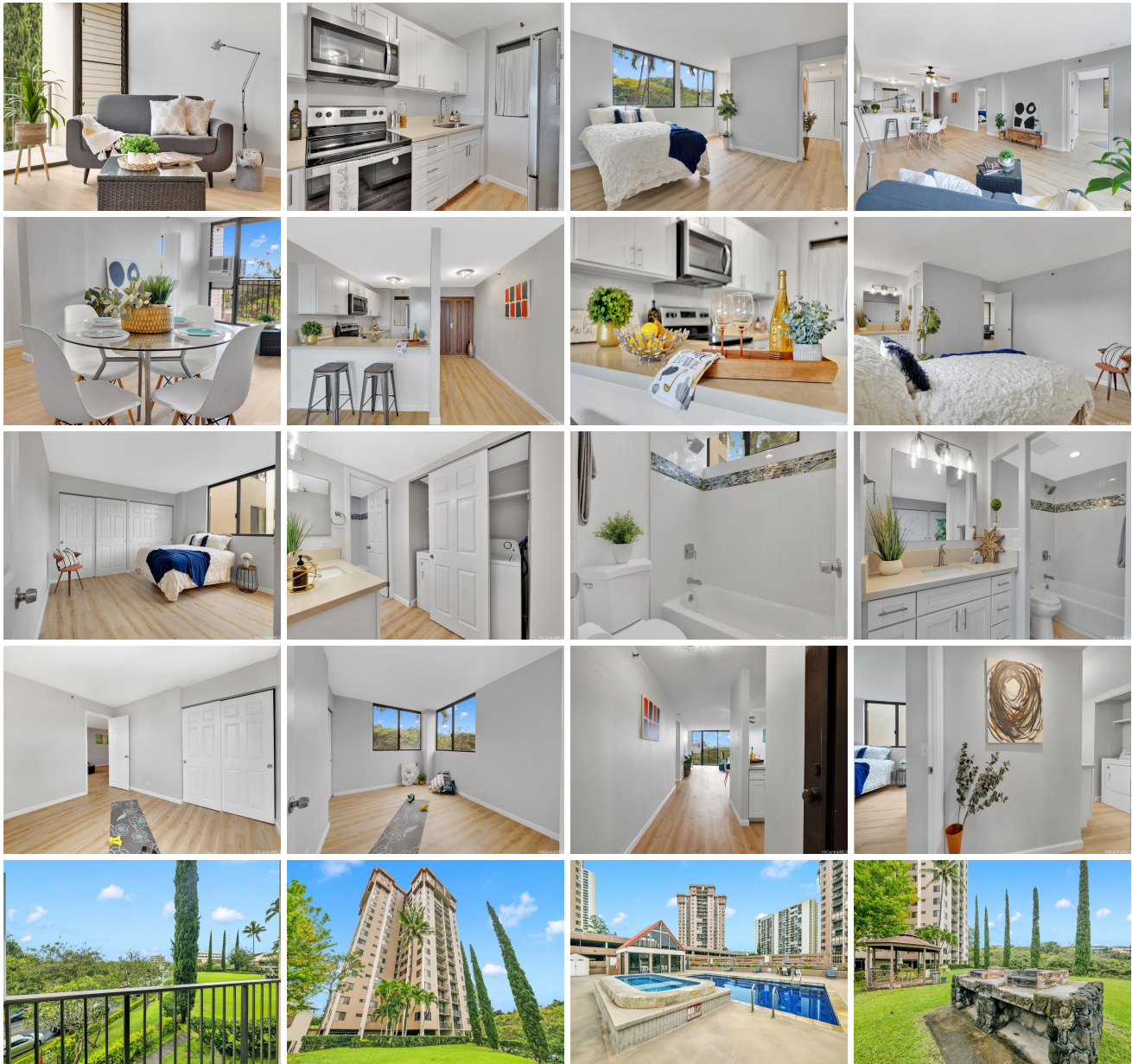
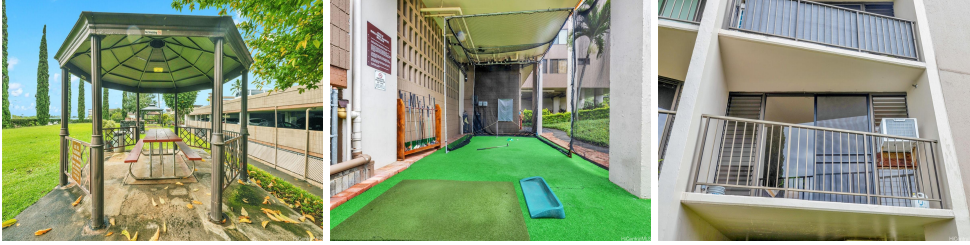


Park At Pearlridge 98-501 Koauka Loop Unit A207, Aiea 96701 * \$599,000

Beds: 2	MLS#: 202411383, FS	Year Built: 1982
Bath: 2/0	Status: Active	Remodeled:
Living Sq. Ft.: 1,067	List Date & DOM: 05-20-2024 & 35	Total Parking: 1
Land Sq. Ft.: 0	Condition: Excellent	Assessed Value
Lanai Sq. Ft.: 48	Frontage:	Building: \$424,700
Sq. Ft. Other: 0	Tax/Year: \$120/2024	Land: \$95,100
Total Sq. Ft. 1,115	Neighborhood: Pearlridge	Total: \$519,800
Maint./Assoc. \$1,047 / \$0	Flood Zone : Zone X - Tool	Stories / CPR: 21+ / No
Parking: Assigned, Covered - 1	Frontage:	
Zoning : 12 - A-2 Medium Density Apartme	View: None	

Public Remarks: Step into lovely island living at 98-501 Koauka Loop #A207 in Aiea. This fully renovated 2-bedroom, 2-bathroom condo boasts brand-new luxury vinyl flooring, brand new appliances, and stunning quartz countertops and new cabinets. The new kitchen and bathrooms exude modern elegance, creating a space that is absolutely immaculate. Enjoy the comfort of everything being brand new, from the flooring to the appliances. Step onto the private lanai and take in the serene views of the surrounding greenery, creating a tranquil outdoor space to unwind and relax. The Park at Pearlridge has ample amenities for the entire family to enjoy, such as; putt putt golf, BBQ area, a pool, Tennis court, security and more. Conveniently located near shopping and dining, this home provides easy access to major roadways for seamless island living. This is a Pet friendly complex. Schedule a showing today and make this your next home sweet home! Seller's offering a \$15,000 credit to buyers. Open House on Saturday 6/15 2-5pm **Sale Conditions:** None **Schools:** , , * [Request Showing](#), [Photos](#), [History](#), [Maps](#), [Deed](#), [Watch List](#), [Tax Info](#)





Address	Price	Bd & Bth	Living / Avg.	Land Avg.	DOM
98-501 Koauka Loop A207	\$599,000	2 & 2/0	1,067 \$561	0 \$inf	35

Address	Tax Maint. Ass.	Assessed Land	Assessed Building	Assessed Total	Ratio	Year & Remodeled
98-501 Koauka Loop A207	\$120 \$1,047 \$0	\$95,100	\$424,700	\$519,800	115%	1982 & NA

[98-501 Koauka Loop A207](#) - MLS#: [202411383](#) - Step into lovely island living at 98-501 Koauka Loop #A207 in Aiea. This fully renovated 2-bedroom, 2-bathroom condo boasts brand-new luxury vinyl flooring, brand new appliances, and stunning quartz countertops and new cabinets. The new kitchen and bathrooms exude modern elegance, creating a space that is absolutely immaculate. Enjoy the comfort of everything being brand new, from the flooring to the appliances. Step onto the private lanai and take in the serene views of the surrounding greenery, creating a tranquil outdoor space to unwind and relax. The Park at Pearlridge has ample amenities for the entire family to enjoy, such as; putt putt golf, BBQ area, a pool, Tennis court, security and more. Conveniently located near shopping and dining, this home provides easy access to major roadways for seamless island living. This is a Pet friendly complex. Schedule a showing today and make this your next home sweet home! Seller's offering a \$15,000 credit to buyers. Open House on Saturday 6/15 2-5pm **Region:** Pearl City **Neighborhood:** Pearlridge **Condition:** Excellent **Parking:** Assigned, Covered - 1 **Total Parking:** 1 **View:** None **Frontage:** **Pool:** **Zoning:** 12 - A-2 Medium Density Apartme **Sale Conditions:** None **Schools:** , , * [Request Showing](#), [Photos](#), [History](#), [Maps](#), [Deed](#), [Watch List](#), [Tax Info](#)

DOM = Days on Market