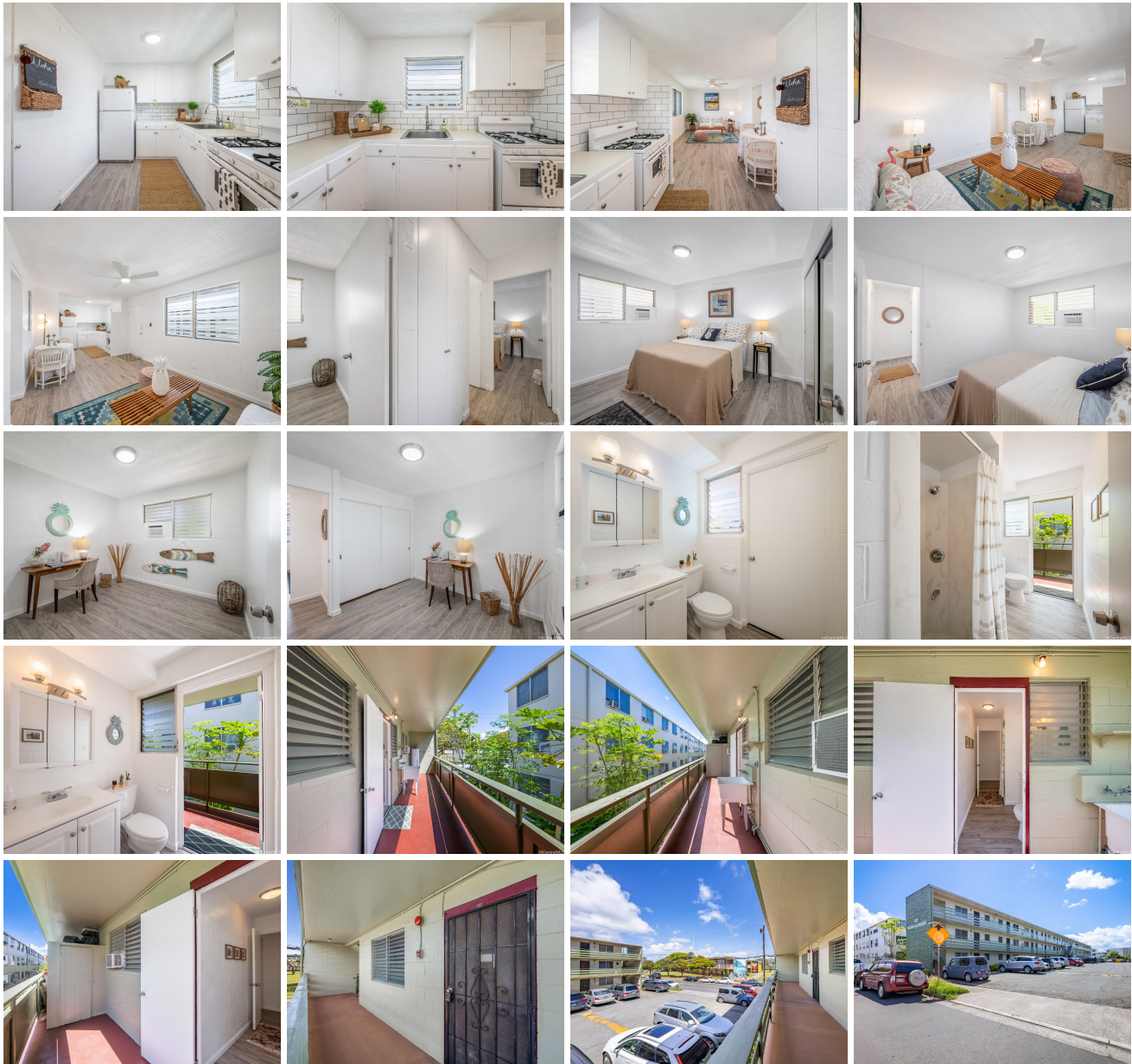


**[Pauahi Gardens 623 Mcneill Street Unit 211, Honolulu 96817](#) \* \$400,000**

Beds: <b>2</b>	MLS#: <b>202411395, FS</b>	Year Built: <b>1960</b>
Bath: <b>1/0</b>	Status: <b>Active</b>	Remodeled: <b>2024</b>
Living Sq. Ft.: <b>585</b>	List Date & DOM: <b>06-02-2024 &amp; 44</b>	Total Parking: <b>1</b>
Land Sq. Ft.: <b>0</b>	Condition: <b>Excellent, Above Average</b>	<a href="#">Assessed Value</a>
Lanai Sq. Ft.: <b>130</b>	Frontage:	Building: <b>\$280,200</b>
Sq. Ft. Other: <b>0</b>	Tax/Year: <b>\$75/2024</b>	Land: <b>\$94,200</b>
Total Sq. Ft. <b>715</b>	Neighborhood: <b>Kalihi Area</b>	Total: <b>\$374,400</b>
Maint./Assoc. <b>\$350 / \$0</b>	<a href="#">Flood Zone</a> : <b>Zone X - Tool</b>	Stories / CPR: <b>Three / No</b>
Parking: <b>Open - 1</b>	Frontage:	
<a href="#">Zoning</a> : <b>11 - A-1 Low Density Apartment</b>	View: <b>None</b>	

**Public Remarks:** If you're seeking an affordable home with low HOA fees and new renovations welcome to this unit in Pauahi Gardens, nicknamed The Shoal. This inviting, spacious corner unit offers the unique benefit of being directly across from the elementary school, making morning drop-offs a breeze. The concrete walls ensure quiet neighbors, and the abundance of natural light creates a warm, homey atmosphere. Each room features a brand-new window AC unit, and the lanai includes a washer hookup and personal water heater. The unit also comes with a dedicated parking stall right in front for easy access. The simple and easy-to-navigate complex is equipped with security cameras and has a caretaker maintenance team on call. Recently renovated for its new owner, this home is an exceptional value at an exceptional price. Cooks and foodies will love the gas stove! Don't wait to see it, call your realtor today for a private tour before it's too late. **Sale Conditions:** None **Schools:** , , \* [Request Showing](#), [Photos](#), [History](#), [Maps](#), [Deed](#), [Watch List](#), [Tax Info](#)





Address	Price	Bd & Bth	Living / Avg.	Land   Avg.	DOM
<a href="#">623 Mcneill Street 211</a>	<a href="#">\$400,000</a>	2 & 1/0	585   \$684	0   \$inf	44

Address	Tax   Maint.   Ass.	Assessed Land	Assessed Building	Assessed Total	Ratio	Year & Remodeled
<a href="#">623 Mcneill Street 211</a>	\$75   \$350   \$0	\$94,200	\$280,200	\$374,400	107%	1960 & 2024

[623 Mcneill Street 211](#) - MLS#: [202411395](#) - If you're seeking an affordable home with low HOA fees and new renovations welcome to this unit in Pauahi Gardens, nicknamed The Shoal. This inviting, spacious corner unit offers the unique benefit of being directly across from the elementary school, making morning drop-offs a breeze. The concrete walls ensure quiet neighbors, and the abundance of natural light creates a warm, homey atmosphere. Each room features a brand-new window AC unit, and the lanai includes a washer hookup and personal water heater. The unit also comes with a dedicated parking stall right in front for easy access. The simple and easy-to-navigate complex is equipped with security cameras and has a caretaker maintenance team on call. Recently renovated for its new owner, this home is an exceptional value at an exceptional price. Cooks and foodies will love the gas stove! Don't wait to see it, call your realtor today for a private tour before it's too late. **Region:** Metro **Neighborhood:** Kalihi Area **Condition:** Excellent, Above Average **Parking:** Open - 1 **Total Parking:** 1 **View:** None **Frontage:** **Pool:** **Zoning:** 11 - A-1 Low Density Apartment **Sale Conditions:** None **Schools:** , , \* [Request Showing](#), [Photos](#), [History](#), [Maps](#), [Deed](#), [Watch List](#), [Tax Info](#)

DOM = Days on Market