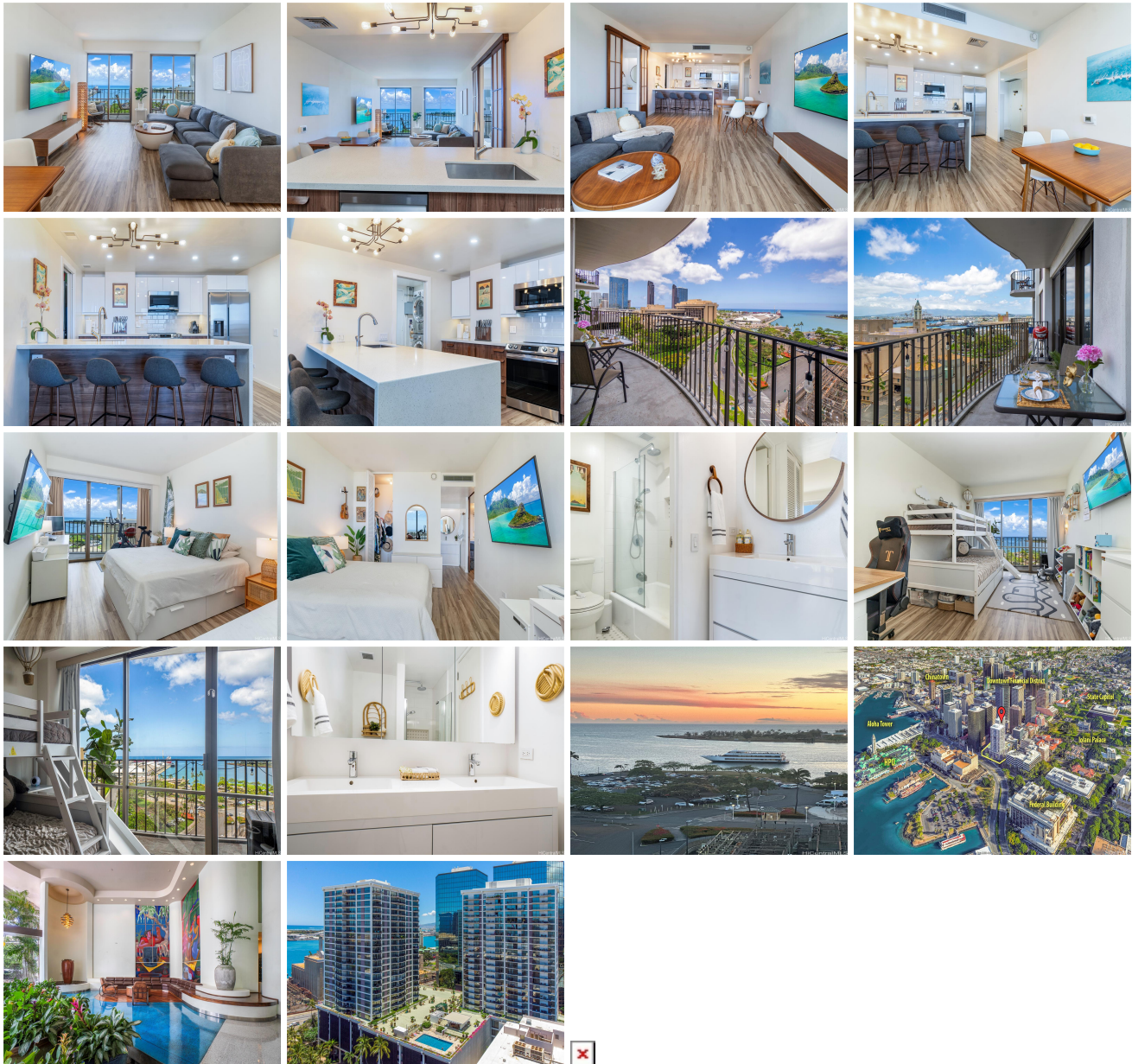


## Harbor Square 700 Richards Street Unit 1110, Honolulu 96813 \* \$785,000

Beds: <b>2</b>	MLS#: <b>202411442, FS</b>	Year Built: <b>1971</b>
Bath: <b>2/0</b>	Status: <b>Active</b>	Remodeled: <b>2023</b>
Living Sq. Ft.: <b>1,031</b>	List Date & DOM: <b>05-24-2024 &amp; 53</b>	Total Parking: <b>1</b>
Land Sq. Ft.: <b>67,910</b>	Condition: <b>Excellent</b>	<a href="#">Assessed Value</a>
Lanai Sq. Ft.: <b>149</b>	Frontage: <b>Ocean, Other, Waterfront</b>	Building: <b>\$600,500</b>
Sq. Ft. Other: <b>0</b>	Tax/Year: <b>\$172/2023</b>	Land: <b>\$90,700</b>
Total Sq. Ft. <b>1,180</b>	Neighborhood: <b>Downtown</b>	Total: <b>\$691,200</b>
Maint./Assoc. <b>\$1,732 / \$0</b>	<a href="#">Flood Zone</a> : <b>Zone X - Tool</b>	Stories / CPR: <b>21+ / No</b>
Parking: <b>Assigned, Covered - 1</b>	Frontage: <b>Ocean, Other, Waterfront</b>	
<a href="#">Zoning</a> : <b>34 - BMX-4 Central Business Mix</b>	View: <b>City, Coastline, Ocean, Sunset</b>	

**Public Remarks:** Convenient coastal living in the vibrant heart of downtown Honolulu! Feel at home in this fully renovated 2 bed, 2 bath sanctuary, over \$120k in upgrades, spanning 1,031 sqft of living space, showcasing breathtaking sunsets, ocean views, and the presence of cruise ships gliding through the water. Every detail of this residence has been refined, from the chic and functional kitchen adorned with quartz countertops and top-of-the-line appliances to the rejuvenating bathrooms and updated electrical/AC systems. The seamless flow of the open floor plan and abundant natural light create an inviting ambiance, perfect for entertaining or simply relishing in life's moments. Step onto the expansive 149 sqft lanai to seamlessly merge indoor comfort with the refreshing outdoor breeze. Convenient parking space, and storage locker included. Harbor Square offers an array of amenities including a swimming pool, BBQ area, and a recreational deck, ensuring year-round enjoyment. Plus, the HOA includes electricity! This residence offers unparalleled accessibility to workplaces, shops, eateries, and the pristine shores of Ala Moana Beach Park. **Sale Conditions:** None **Schools:** [Royal](#), [Keelikolani](#), [Mckinley](#) \* [Request Showing](#), [Photos](#), [History](#), [Maps](#), [Deed](#), [Watch List](#), [Tax Info](#)



Address	Price	Bd & Bth	Living / Avg.	Land   Avg.	DOM
<a href="#">700 Richards Street 1110</a>	<a href="#">\$785,000</a>	2 & 2/0	1,031   \$761	67,910   \$12	53

Address	Tax   Maint.   Ass.	Assessed Land	Assessed Building	Assessed Total	Ratio	Year & Remodeled
<a href="#">700 Richards Street 1110</a>	\$172   \$1,732   \$0	\$90,700	\$600,500	\$691,200	114%	1971 & 2023

[700 Richards Street 1110](#) - MLS#: [202411442](#) - Convenient coastal living in the vibrant heart of downtown Honolulu! Feel at home in this fully renovated 2 bed, 2 bath sanctuary, over \$120k in upgrades, spanning 1,031 sqft of living space, showcasing breathtaking sunsets, ocean views, and the presence of cruise ships gliding through the water. Every detail of this residence has been refined, from the chic and functional kitchen adorned with quartz countertops and top-of-the-line appliances to the rejuvenating bathrooms and updated electrical/AC systems. The seamless flow of the open floor plan and abundant natural light create an inviting ambiance, perfect for entertaining or simply relishing in life's moments. Step onto the expansive 149 sqft lanai to seamlessly merge indoor comfort with the refreshing outdoor breeze. Convenient parking space, and storage locker included. Harbor Square offers an array of amenities including a swimming pool, BBQ area, and a recreational deck, ensuring year-round enjoyment. Plus, the HOA includes electricity! This residence offers unparalleled accessibility to workplaces, shops, eateries, and the pristine shores of Ala Moana Beach Park. **Region:** Metro **Neighborhood:** Downtown **Condition:** Excellent **Parking:** Assigned, Covered - 1 **Total Parking:** 1 **View:** City, Coastline, Ocean, Sunset **Frontage:** Ocean, Other, Waterfront **Pool:** **Zoning:** 34 - BMX-4 Central Business Mix **Sale Conditions:** None **Schools:** [Royal](#), [Keelikolani](#), [Mckinley](#) \* [Request Showing](#), [Photos](#), [History](#), [Maps](#), [Deed](#), [Watch List](#), [Tax Info](#)

DOM = Days on Market