

1929 Huea Place, Honolulu 96819 * \$1,700,000

Beds: **9**
 Bath: **3/1**
 Living Sq. Ft.: **3,349**
 Land Sq. Ft.: **10,897**
 Lanai Sq. Ft.: **443**
 Sq. Ft. Other: **768**
 Total Sq. Ft. **4,560**
 Maint./Assoc. **\$0 / \$0**

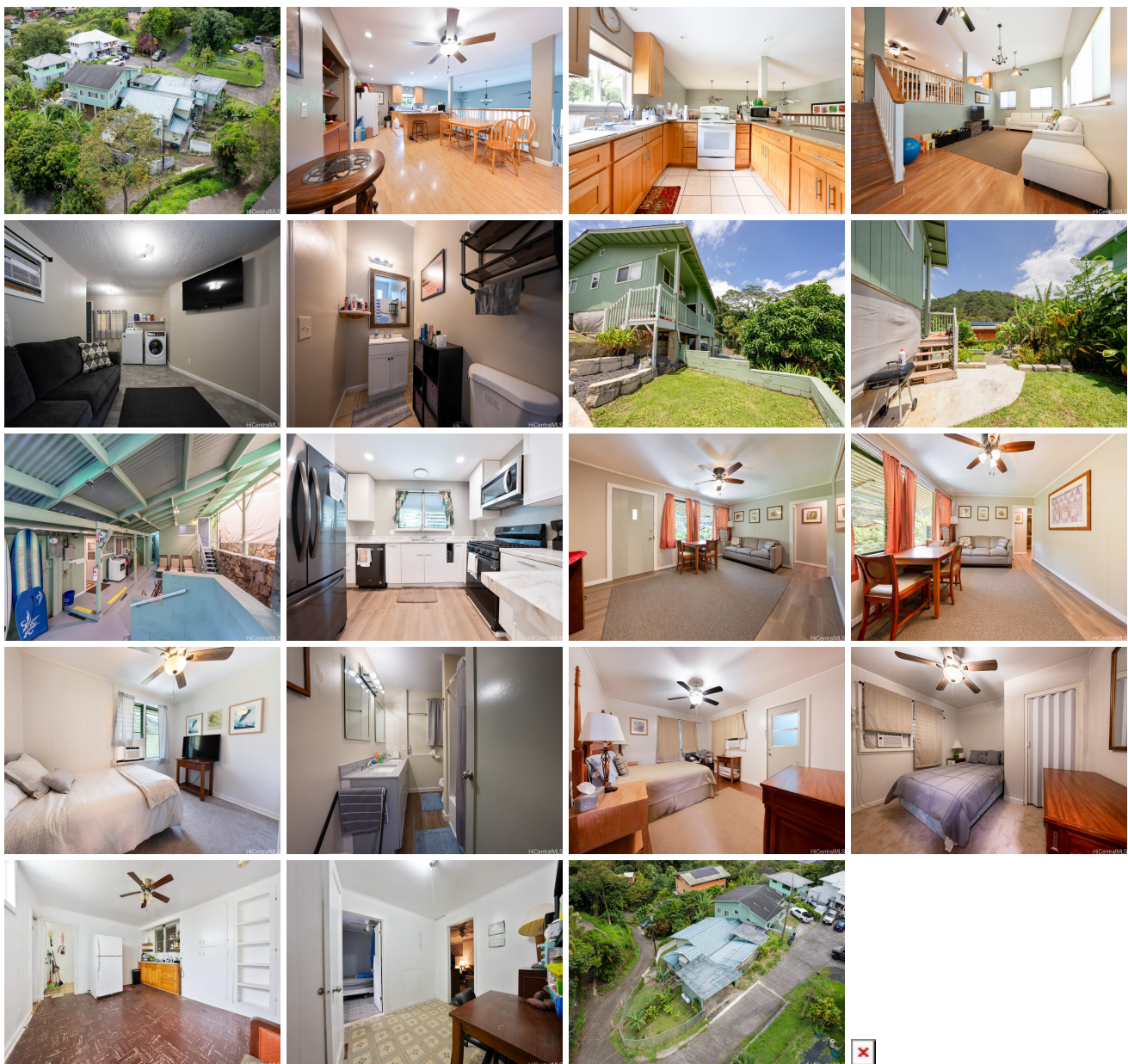
MLS#: **202411455, FS**
 Status: **Active**
 List Date & DOM: **05-17-2024 & 40**
 Condition: **Above Average**
 Frontage:
 Tax/Year: **\$268/2023**
 Neighborhood: **Kalihi Valley**
 Flood Zone: **Zone X - Tool**

Year Built: **1957**
 Remodeled: **2008**
 Total Parking: **6**
[Assessed Value](#)
 Building: **\$379,100**
 Land: **\$738,700**
 Total: **\$1,117,800**
 Stories / CPR: **Two, Split Level / No**

Parking: **3 Car+, Carport, Driveway**
 Zoning: **03 - R10 - Residential District**

Frontage:
 View: **Mountain**

Public Remarks: Welcome to 1929 Huea Place, a hidden gem with three units that can blend into one large estate. The main home offers an open floor plan with 3 bdrms / 2 baths with its own separate laundry area and private yard space. The second unit offers an old Hawaii home charm with a modern kitchen and is outfitted with 3 bdrms 1 bath with an outdoor shower. The third unit is a cozy 3 bdrm 1.5 bath with a small kitchenette and separate yard space. The possibilities of this estate are endless. **Sale Conditions:** None **Schools:** , , * [Request Showing](#), [Photos](#), [History](#), [Maps](#), [Deed](#), [Watch List](#), [Tax Info](#)



Address	Price	Bd & Bth	Living / Avg.	Land Avg.	DOM
1929 Huea Place	\$1,700,000	9 & 3/1	3,349 \$508	10,897 \$156	40

Address	Tax Maint. Ass.	Assessed Land	Assessed Building	Assessed Total	Ratio	Year & Remodeled
1929 Huea Place	\$268 \$0 \$0	\$738,700	\$379,100	\$1,117,800	152%	1957 & 2008

[1929 Huea Place](#) - MLS#: [202411455](#) - Welcome to 1929 Huea Place, a hidden gem with three units that can blend into one large estate. The main home offers an open floor plan with 3 bdrms / 2 baths with its own separate laundry area and private yard space. The second unit offers an old Hawaii home charm with a modern kitchen and is outfitted with 3 bdrms 1 bath with an outdoor shower. The third unit is a cozy 3 bdrm 1.5 bath with a small kitchenette and separate yard space. The possibilities of this estate are endless. **Region:** Metro **Neighborhood:** Kalihi Valley **Condition:** Above Average **Parking:** 3 Car+, Carport, Driveway **Total Parking:** 6 **View:** Mountain **Frontage:** **Pool:** None **Zoning:** 03 - R10 - Residential District **Sale Conditions:** None **Schools:** , , * [Request Showing](#), [Photos](#), [History](#), [Maps](#), [Deed](#), [Watch List](#), [Tax Info](#)

DOM = Days on Market