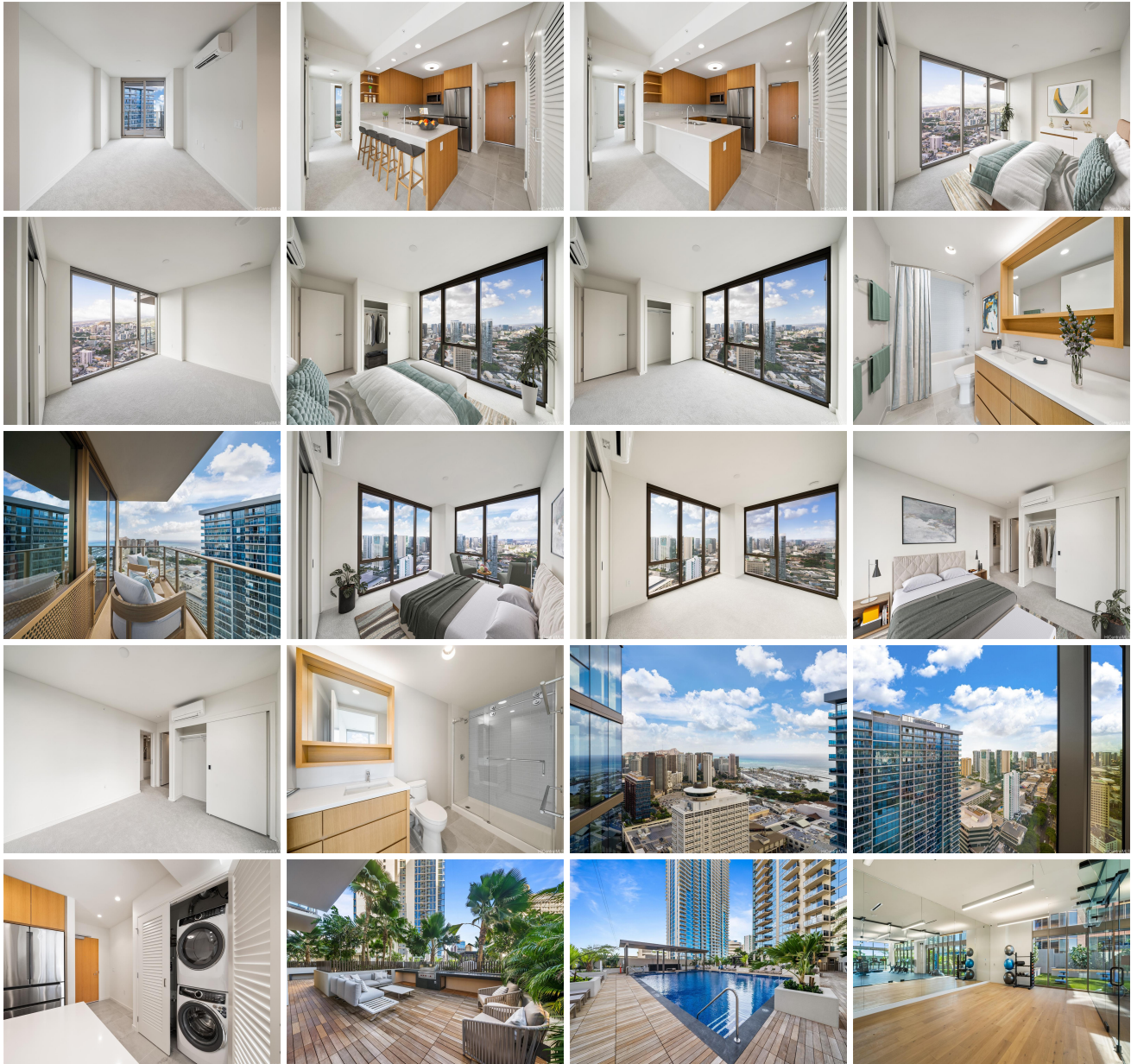


Sky Ala Moana West 1388 Kapiolani Boulevard Unit 4002, Honolulu 96814 * Sky Ala Moana

West * \$1,148,888 * Originally \$1,250,000

Beds: 2	MLS#: 202411482, FS	Year Built: 2023
Bath: 2/0	Status: Active	Remodeled:
Living Sq. Ft.: 822	List Date & DOM: 05-18-2024 & 43	Total Parking: 2
Land Sq. Ft.: 0	Condition: Excellent, Above Average	Assessed Value
Lanai Sq. Ft.: 91	Frontage:	Building: \$282,400
Sq. Ft. Other: 0	Tax/Year: \$0/2023	Land: \$56,400
Total Sq. Ft. 913	Neighborhood: Holiday Mart	Total: \$338,800
Maint./Assoc. \$1,088 / \$0	Flood Zone : Zone X - Tool	Stories / CPR: 21+ / No
Parking: Assigned, Covered - 2	Frontage:	
Zoning : 05 - R-5 Residential District	View: Diamond Head, Mountain, Ocean	

Public Remarks: Wonderful opportunity for you to purchase a brand new and highly desirable Sky Ala Moana West. Be the first to live in this high floor 2 bedroom, 2 bathroom with amazing views of the ocean and the city. Located in the center of Ala Moana area and conveniently located near Ala Moana Shopping Center and Ala Moana Beach Park. Enjoy your luxury amenities in the building which features a pool & whirlpool spa, private dining rooms, playground, cabanas, BBQ area, fitness areas and more! Unit features upgraded stainless steel appliances, quartz countertops and a deep soak tub in the bathroom. 2 covered garage parking stalls which includes storage locker. Enjoy Fireworks on Friday nights from your lanai! **Sale Conditions:** None **Schools:** [Kaahumanu](#), [Washington](#), [Mckinley](#) * [Request Showing](#), [Photos](#), [History](#), [Maps](#), [Deed](#), [Watch List](#), [Tax Info](#)





Address	Price	Bd & Bth	Living / Avg.	Land Avg.	Lanai	Occ.	FL	DOM
1388 Kapiolani Boulevard 4002	\$1,148,888	2 & 2/0	822 \$1,398	0 \$inf	91	0%	40	43

Address	Tax Maint. Ass.	Assessed Land	Assessed Building	Assessed Total	Ratio	Year & Remodeled
1388 Kapiolani Boulevard 4002	\$0 \$1,088 \$0	\$56,400	\$282,400	\$338,800	339%	2023 & NA

[1388 Kapiolani Boulevard 4002](#) - MLS#: [202411482](#) - Original price was \$1,250,000 - Wonderful opportunity for you to purchase a brand new and highly desirable Sky Ala Moana West. Be the first to live in this high floor 2 bedroom, 2 bathroom with amazing views of the ocean and the city. Located in the center of Ala Moana area and conveniently located near Ala Moana Shopping Center and Ala Moana Beach Park. Enjoy your luxury amenities in the building which features a pool & whirlpool spa, private dining rooms, playground, cabanas, BBQ area, fitness areas and more! Unit features upgraded stainless steel appliances, quartz countertops and a deep soak tub in the bathroom. 2 covered garage parking stalls which includes storage locker. Enjoy Fireworks on Friday nights from your lanai! **Region:** Metro **Neighborhood:** Holiday Mart **Condition:** Excellent, Above Average **Parking:** Assigned, Covered - 2 **Total Parking:** 2 **View:** Diamond Head, Mountain, Ocean **Frontage:** **Pool:** **Zoning:** 05 - R-5 Residential District **Sale Conditions:** None **Schools:** [Kaahumanu](#), [Washington](#), [Mckinley](#) * [Request Showing](#), [Photos](#), [History](#), [Maps](#), [Deed](#), [Watch List](#), [Tax Info](#)

DOM = Days on Market, Occ. = Occupancy, FL = Floor Number