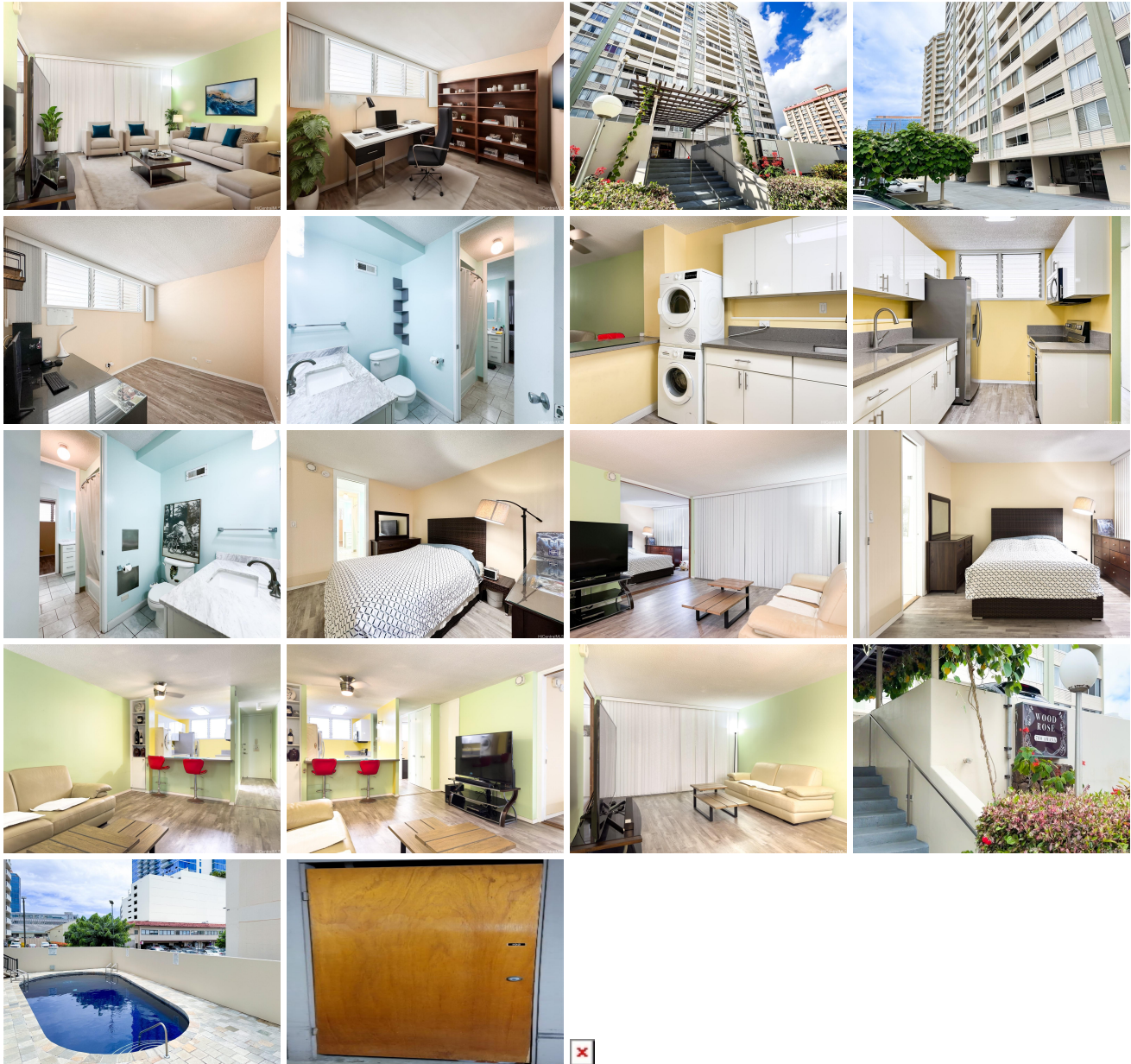


## **Woodrose 780 Amana Street Unit 102, Honolulu 96814 \* \$459,000**

Beds: <b>2</b>	MLS#: <b><u>202411502</u>, FS</b>	Year Built: <b>1967</b>
Bath: <b>1/1</b>	Status: <b>Active</b>	Remodeled: <b>2019</b>
Living Sq. Ft.: <b>778</b>	List Date & DOM: <b>05-18-2024 &amp; 56</b>	Total Parking: <b>1</b>
Land Sq. Ft.: <b>33,715</b>	Condition: <b>Excellent</b>	<a href="#">Assessed Value</a>
Lanai Sq. Ft.: <b>50</b>	Frontage:	Building: <b>\$379,200</b>
Sq. Ft. Other: <b>0</b>	Tax/Year: <b>\$99/2023</b>	Land: <b>\$61,300</b>
Total Sq. Ft. <b>828</b>	Neighborhood: <b>Holiday Mart</b>	Total: <b>\$440,500</b>
Maint./Assoc. <b>\$928 / \$0</b>	<a href="#">Flood Zone</a> : <b>Zone X - Tool</b>	Stories / CPR: / <b>No</b>
Parking: <b>Assigned, Open - 1</b>	Frontage:	
<a href="#">Zoning</a> : <b>18 - AMX-3 High Density Apt Mix</b>	View: <b>City</b>	

**Public Remarks:** Discover the convenience of mid-town living at the Woodrose building, a perfect fit for most buyers. This 2-bedroom, 1.5-bathroom unit, located steps from the vibrant Ala Moana Shopping Center, Don Quijote, Walmart, Sam's Club, and many dining options, offers an unmatched blend of comfort and convenience. Embrace city living with easy access to public transportation. The unit, refreshed with a remodel in 2019, boasts a contemporary ambiance. The distinctive Jack and Jill bathroom provides both privacy and functionality. Enjoy city living, bringing the essence of urban living to your doorstep. Safety is a top priority, ensured by a dedicated night security guard and a vigilant site manager. Relax in the building's serene pool, an oasis amidst the city's hustle. The inclusion of all utilities (electricity, cable, hot water, water, and sewer) in the maintenance fee and a reserved parking space adds to the practicality of this appealing property. This unit also comes with a storage unit. Ideal for first-time homeowners as well as investors, this Woodrose unit represents Honolulu's dynamic heart. The Special Assessment of \$942.88 a month until December 2024. **Sale Conditions:** None **Schools:** [Kaahumanu](#), [Washington](#), [Mckinley](#) \* [Request Showing](#), [Photos](#), [History](#), [Maps](#), [Deed](#), [Watch List](#), [Tax Info](#)



Address	Price	Bd & Bth	Living / Avg.	Land   Avg.	DOM
<a href="#">780 Amana Street 102</a>	<a href="#">\$459,000</a>	2 & 1/1	778   \$590	33,715   \$14	56

Address	Tax   Maint.   Ass.	Assessed Land	Assessed Building	Assessed Total	Ratio	Year & Remodeled
<a href="#">780 Amana Street 102</a>	\$99   \$928   \$0	\$61,300	\$379,200	\$440,500	104%	1967 & 2019

[780 Amana Street 102](#) - MLS#: [202411502](#) - Discover the convenience of mid-town living at the Woodrose building, a perfect fit for most buyers. This 2-bedroom, 1.5-bathroom unit, located steps from the vibrant Ala Moana Shopping Center, Don Quijote, Walmart, Sam's Club, and many dining options, offers an unmatched blend of comfort and convenience. Embrace city living with easy access to public transportation. The unit, refreshed with a remodel in 2019, boasts a contemporary ambiance. The distinctive Jack and Jill bathroom provides both privacy and functionality. Enjoy city living, bringing the essence of urban living to your doorstep. Safety is a top priority, ensured by a dedicated night security guard and a vigilant site manager. Relax in the building's serene pool, an oasis amidst the city's hustle. The inclusion of all utilities (electricity, cable, hot water, water, and sewer) in the maintenance fee and a reserved parking space adds to the practicality of this appealing property. This unit also comes with a storage unit. Ideal for first-time homeowners as well as investors, this Woodrose unit represents Honolulu's dynamic heart. The Special Assessment of \$942.88 a month until December 2024.

**Region:** Metro **Neighborhood:** Holiday Mart **Condition:** Excellent **Parking:** Assigned, Open - 1 **Total Parking:** 1 **View:** City **Frontage:** **Pool:** **Zoning:** 18 - AMX-3 High Density Apt Mix **Sale Conditions:** None **Schools:** [Kaahumanu](#), [Washington](#), [Mckinley](#) \* [Request Showing](#), [Photos](#), [History](#), [Maps](#), [Deed](#), [Watch List](#), [Tax Info](#)

DOM = Days on Market