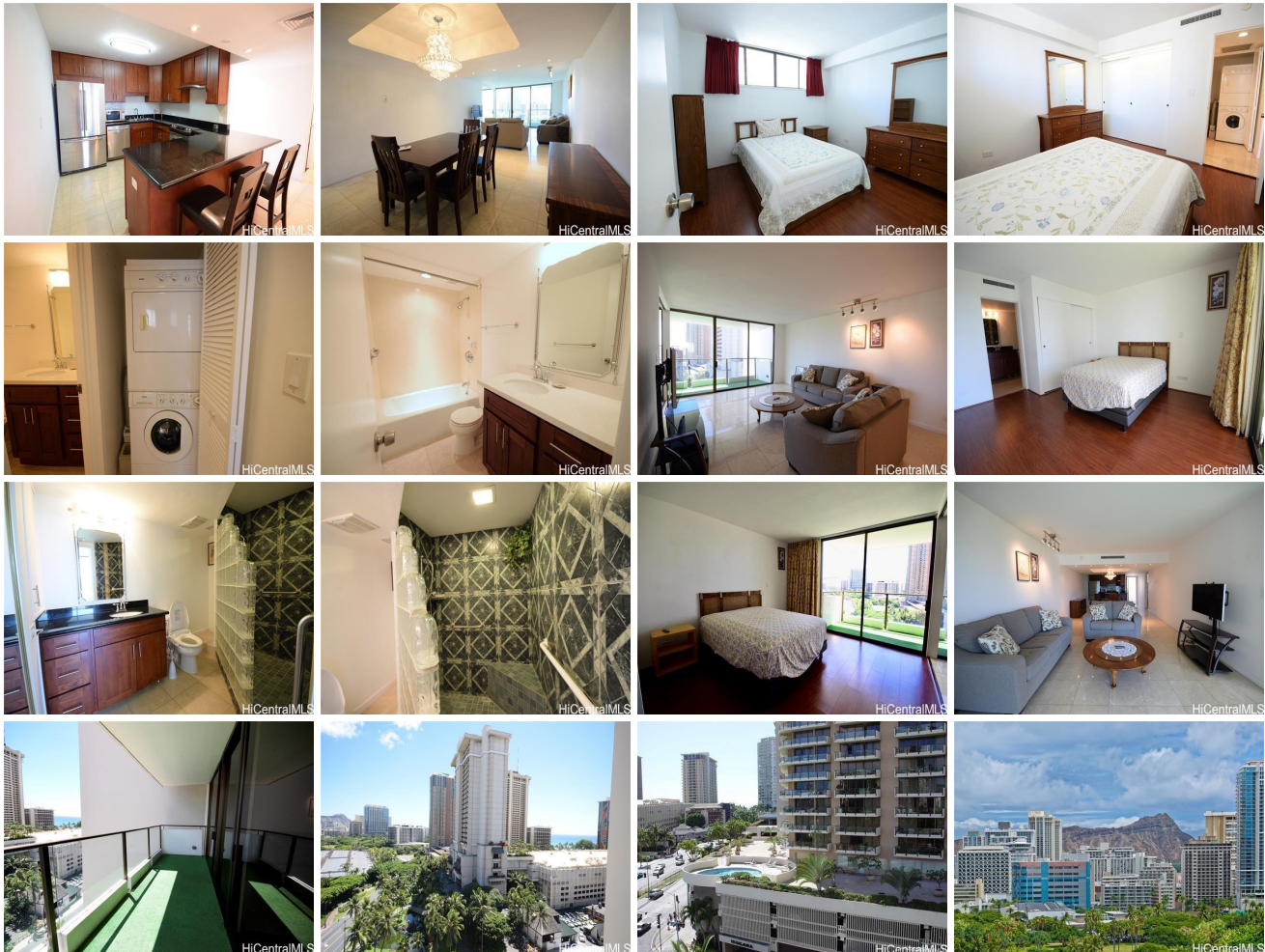


**Wailana At Waikiki 1860 Ala Moana Boulevard Unit 1410, Honolulu 96815 \* \$650,000**

Beds: <b>2</b>	MLS#: <b>202411510, FS</b>	Year Built: <b>1970</b>
Bath: <b>2/0</b>	Status: <b>Active</b>	Remodeled: <b>2011</b>
Living Sq. Ft.: <b>1,188</b>	List Date & DOM: <b>05-21-2024 &amp; 57</b>	Total Parking: <b>1</b>
Land Sq. Ft.: <b>43,124</b>	Condition: <b>Above Average</b>	<a href="#">Assessed Value</a>
Lanai Sq. Ft.: <b>0</b>	Frontage:	Building: <b>\$674,000</b>
Sq. Ft. Other: <b>0</b>	Tax/Year: <b>\$176/2024</b>	Land: <b>\$39,600</b>
Total Sq. Ft. <b>1,188</b>	Neighborhood: <b>Waikiki</b>	Total: <b>\$713,600</b>
Maint./Assoc. <b>\$1,065 / \$0</b>	<a href="#">Flood Zone</a> : <b>Zone AE - Tool</b>	Stories / CPR: / <b>No</b>
Parking: <b>Assigned, Covered - 1, Secured Entry</b>	Frontage:	
<a href="#">Zoning</a> : <b>X2 - Apartment Precinct</b>	View: <b>City, Diamond Head, Mountain, Ocean</b>	

**Public Remarks:** High 14th floor private corner end unit in popular Wailana at Waikiki. Almost 1,200 sq ft interior with another 124 sf lanai with gorgeous ocean, Diamond Head and Ft Derussy views. Watch fireworks off your lanai every Friday from the Hilton Hawaiian Village across the street. Washer/dryer in the unit, central A/C, marble floors, fully furnished. One covered parking stall storage. Convenient location close to Ala Moana Shopping Center, Ala Moana Beach Park, Waikiki, Downtown. VA approved building, pet friendly allowed 2 pets up to 35 lbs and security guard. The maintenance fee is \$1,064.74, utility admin fee \$6 and reserve fee is \$642.94, total \$1,713.68 plus electricity depending on the usage. All these pictures took prior to the tenants moved in. **Sale Conditions:** None **Schools:** , \* [Request Showing](#), [Photos](#), [History](#), [Maps](#), [Deed](#), [Watch List](#), [Tax Info](#)



Address	Price	Bd & Bth	Living / Avg.	Land   Avg.	DOM
<a href="#">1860 Ala Moana Boulevard 1410</a>	<b>\$650,000</b>	2 & 2/0	1,188   \$547	43,124   \$15	57

Address	Tax   Maint.   Ass.	Assessed Land	Assessed Building	Assessed Total	Ratio	Year & Remodeled
<a href="#">1860 Ala Moana Boulevard 1410</a>	\$176   \$1,065   \$0	\$39,600	\$674,000	\$713,600	91%	1970 & 2011

[1860 Ala Moana Boulevard 1410](#) - MLS#: [202411510](#) - High 14th floor private corner end unit in popular Wailana at Waikiki. Almost 1,200 sq ft interior with another 124 sf lanai with gorgeous ocean, Diamond Head and Ft Derussy views. Watch fireworks off your lanai every Friday from the Hilton Hawaiian Village across the street. Washer/dryer in the unit, central A/C, marble floors, fully furnished. One covered parking stall storage. Convenient location close to Ala Moana Shopping Center, Ala Moana Beach Park, Waikiki, Downtown. VA approved building, pet friendly allowed 2 pets up to 35 lbs and security guard. The maintenance fee is \$1,064.74, utility admin fee \$6 and reserve fee is \$642.94, total \$1,713.68 plus electricity depending on the usage. All these pictures took prior to the tenants moved in. **Region:** Metro **Neighborhood:** Waikiki **Condition:** Above Average **Parking:** Assigned, Covered - 1, Secured Entry **Total Parking:** 1 **View:** City, Diamond Head, Mountain, Ocean **Frontage:** **Pool:** **Zoning:** X2 - Apartment Precinct **Sale Conditions:** None **Schools:** , , \* [Request Showing](#), [Photos](#), [History](#), [Maps](#), [Deed](#), [Watch List](#), [Tax Info](#)

DOM = Days on Market