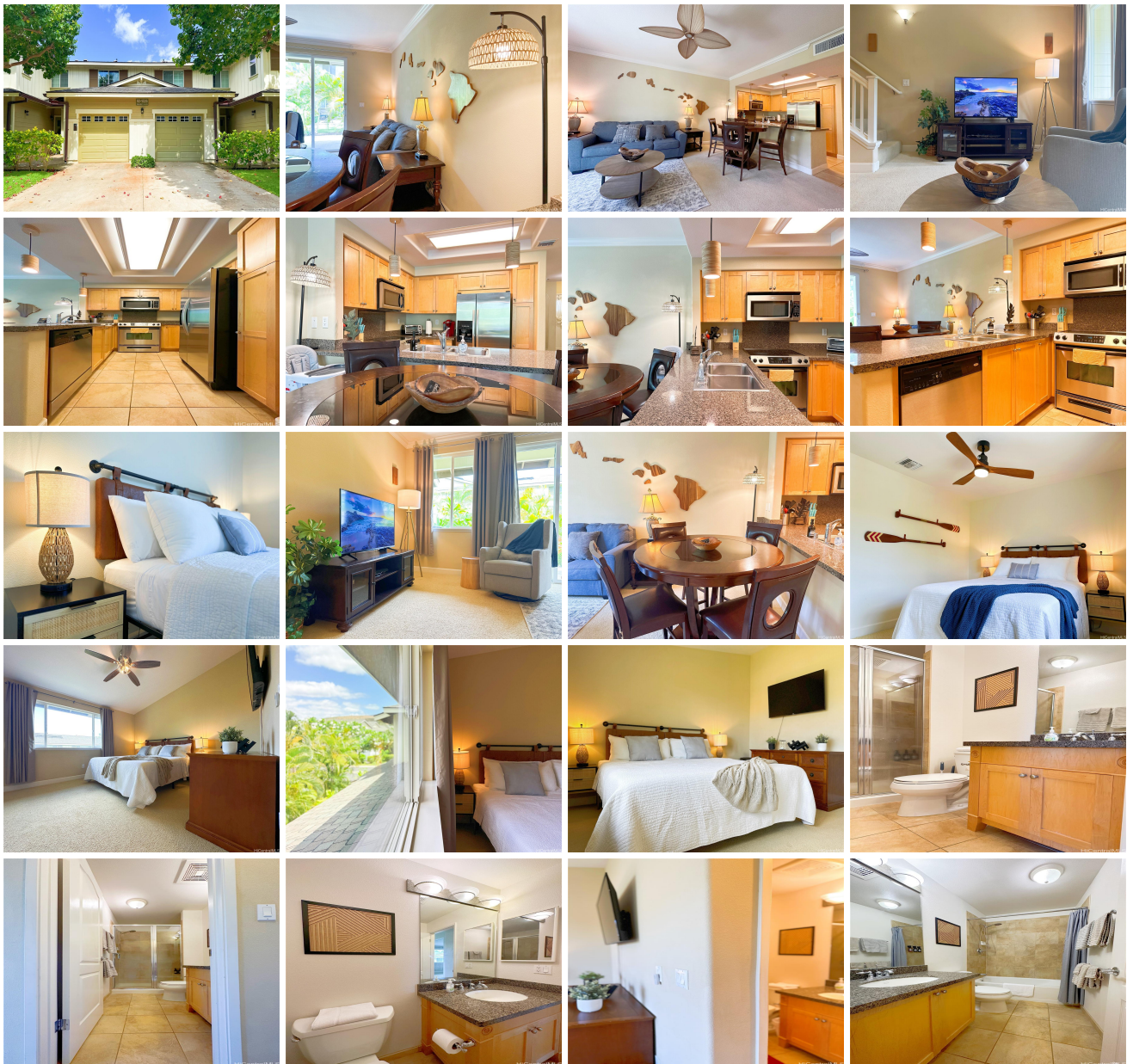


Ko Olina Hillside Villas 92-1526 Aliinui Drive Unit 2203, Kapolei 96707 * \$805,000

Beds: 2	MLS#: 202411538, FS	Year Built: 2006
Bath: 2/1	Status: Active	Remodeled:
Living Sq. Ft.: 981	List Date & DOM: 05-19-2024 & 40	Total Parking: 2
Land Sq. Ft.: 0	Condition: Above Average	Assessed Value
Lanai Sq. Ft.: 141	Frontage:	Building: \$570,500
Sq. Ft. Other: 0	Tax/Year: \$192/2023	Land: \$86,200
Total Sq. Ft. 1,122	Neighborhood: Ko Olina	Total: \$656,700
Maint./Assoc. \$635 / \$0	Flood Zone : Zone D - Tool	Stories / CPR: Two / No
Parking: Covered - 1, Open - 1	Frontage:	
Zoning : 11 - A-1 Low Density Apartment	View: Mountain	

Public Remarks: Must See! Welcome to your own piece of paradise in the beautiful Ko Olina Resort! This stunning 2-bedroom, 2.5-bathroom townhouse in the highly sought-after Hillside Villas community offers luxury living at its finest. Offered fully furnished. Conveniently close to the Ko Olina 18-hole Golf Club, walking paths, Roy's Restaurant and other dining options, Thai Issan Massage, Four Seasons Resort, and Ko Olina Marina. **Sale Conditions:** None **Schools:** , , * [Request Showing, Photos, History, Maps, Deed, Watch List, Tax Info](#)





Address	Price	Bd & Bth	Living / Avg.	Land Avg.	DOM
92-1526 Aliinui Drive 2203	\$805,000	2 & 2/1	981 \$821	0 \$inf	40

Address	Tax Maint. Ass.	Assessed Land	Assessed Building	Assessed Total	Ratio	Year & Remodeled
92-1526 Aliinui Drive 2203	\$192 \$635 \$0	\$86,200	\$570,500	\$656,700	123%	2006 & NA

[92-1526 Aliinui Drive 2203](#) - MLS#: [202411538](#) - Must See! Welcome to your own piece of paradise in the beautiful Ko Olina Resort! This stunning 2-bedroom, 2.5-bathroom townhouse in the highly sought-after Hillside Villas community offers luxury living at its finest. Offered fully furnished. Conveniently close to the Ko Olina 18-hole Golf Club, walking paths, Roy's Restaurant and other dining options, Thai Issan Massage, Four Seasons Resort, and Ko Olina Marina. **Region:** Ewa Plain **Neighborhood:** Ko Olina **Condition:** Above Average **Parking:** Covered - 1, Open - 1 **Total Parking:** 2 **View:** Mountain **Frontage:** **Pool:** **Zoning:** 11 - A-1 Low Density Apartment **Sale Conditions:** None **Schools:** , , * [Request Showing](#), [Photos](#), [History](#), [Maps](#), [Deed](#), [Watch List](#), [Tax Info](#)

DOM = Days on Market