

Sans Souci Inc 2877 Kalakaua Avenue Unit 505/506, Honolulu 96815 * Sans Souci Inc *

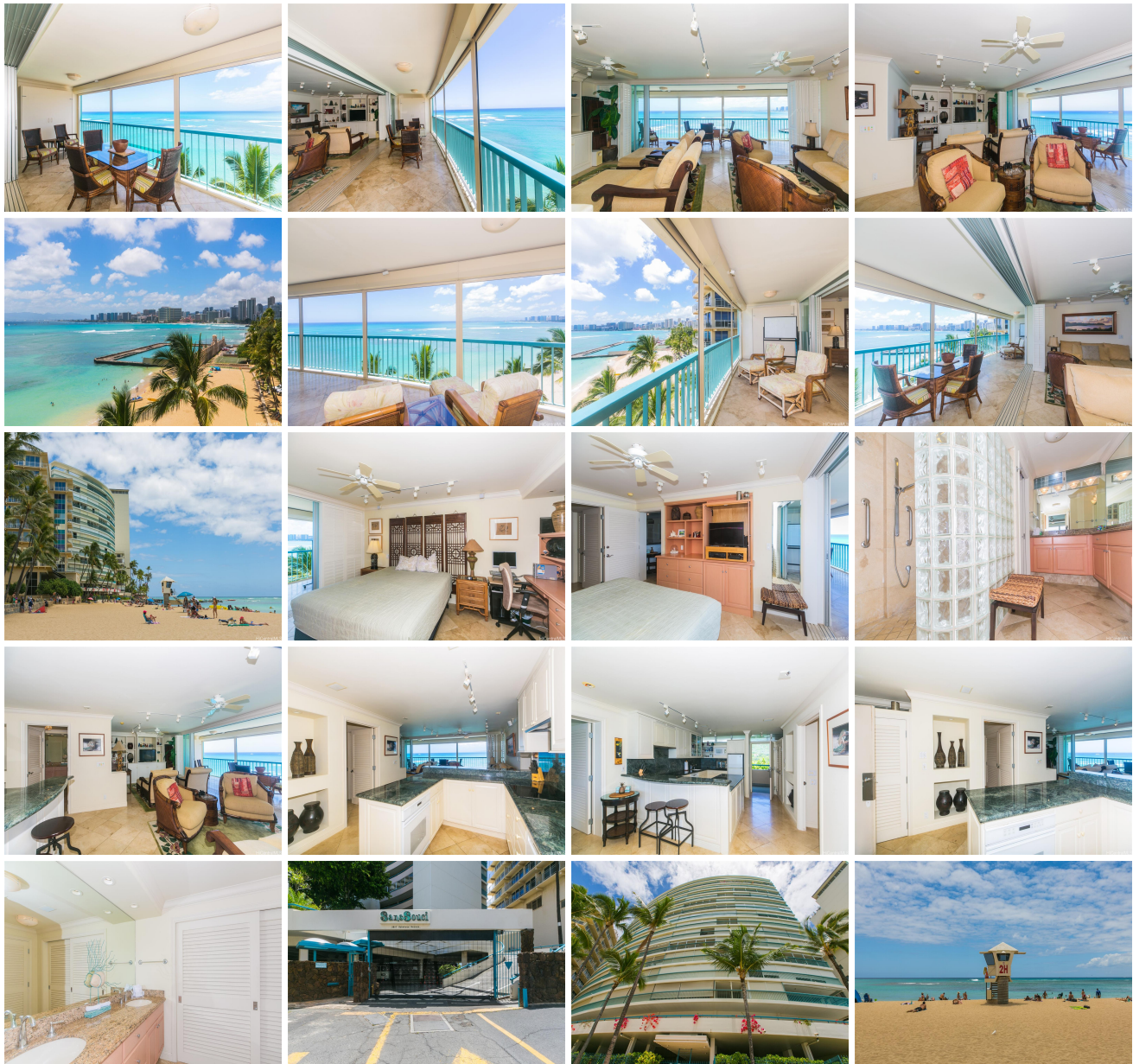
\$1,550,000

Beds: 2	MLS#: 202411542, LH	Year Built: 1959
Bath: 2/0	Status: Active	Remodeled:
Living Sq. Ft.: 1,066	List Date & DOM: 05-22-2024 & 31	Total Parking: 2
Land Sq. Ft.: 0	Condition: Above Average	Assessed Value
Lanai Sq. Ft.: 360	Frontage: Ocean, Sandy Beach	Building: \$1,144,800
Sq. Ft. Other: 0	Tax/Year: \$0/2023	Land: \$124,600
Total Sq. Ft. 1,426	Neighborhood: Diamond Head	Total: \$1,269,400
Maint./Assoc. \$1,540 / \$0	Flood Zone : Zone AE - Tool	Stories / CPR: 8-14 / No
Parking: Assigned, Covered - 1, Secured Entry	Frontage: Ocean, Sandy Beach	

[Zoning](#): **12 - A-2 Medium Density Apartme**

View: **City, Coastline, Ocean, Sunset**

Public Remarks: The perfect location to watch beautiful sunsets! Ocean front living with Sans Souci beach at your doorstep. Wake up to the sound of the waves...it's all about lifestyle! The ocean is a buzz of activities; either join in or sit on your lanai and absorb this wonderful resort like atmosphere. There are two Murphy beds on the lanai to accommodate additional guests. Interior design is perfect for entertaining. Plantation shutters to cool the afternoon sun or add additional privacy. Located across from Kapiolani Park and a short walk to Waikiki, Honolulu Zoo, Shell Amphitheatre, Elks Lodge and Outrigger Canoe Club. Beachside dining at the Hau Tree, Michel's or Happy Hour at Arden located in the Lotus Honolulu Hotel. Sold with TMK-1-3-1-032-007-0034. **Sale Conditions:** None **Schools:** , , * [Request Showing](#), [Photos](#), [History](#), [Maps](#), [Deed](#), [Watch List](#), [Tax Info](#)





Address	Price	Bd & Bth	Living / Avg.	Land Avg.	Lanai	Occ.	FL	DOM
2877 Kalakaua Avenue 505/506	\$1,550,000 LH	2 & 2/0	1,066 \$1,454	0 \$inf	360	25%	5	31

Address	Tax Maint. Ass.	Assessed Land	Assessed Building	Assessed Total	Ratio	Year & Remodeled
2877 Kalakaua Avenue 505/506	\$0 \$1,540 \$0	\$124,600	\$1,144,800	\$1,269,400	122%	1959 & NA

[2877 Kalakaua Avenue 505/506](#) - MLS#: [202411542](#) - The perfect location to watch beautiful sunsets! Ocean front living with Sans Souci beach at your doorstep. Wake up to the sound of the waves...it's all about lifestyle! The ocean is a buzz of activities; either join in or sit on your lanai and absorb this wonderful resort like atmosphere. There are two Murphy beds on the lanai to accommodate additional guests. Interior design is perfect for entertaining. Plantation shutters to cool the afternoon sun or add additional privacy. Located across from Kapiolani Park and a short walk to Waikiki, Honolulu Zoo, Shell Amphitheatre, Elks Lodge and Outrigger Canoe Club. Beachside dining at the Hau Tree, Michel's or Happy Hour at Arden located in the Lotus Honolulu Hotel. Sold with TMK-1-3-1-032-007-0034. **Region:** Diamond Head **Neighborhood:** Diamond Head **Condition:** Above Average **Parking:** Assigned, Covered - 1, Secured Entry **Total Parking:** 2 **View:** City, Coastline, Ocean, Sunset **Frontage:** Ocean, Sandy Beach **Pool:** **Zoning:** 12 - A-2 Medium Density Apartme **Sale Conditions:** None **Schools:** , , * [Request Showing](#), [Photos](#), [History](#), [Maps](#), [Deed](#), [Watch List](#), [Tax Info](#)

DOM = Days on Market, Occ. = Occupancy, FL = Floor Number