

Park At Pearlridge 98-487 Koauka Loop Unit B504, Aiea 96701 * Park At Pearlridge *

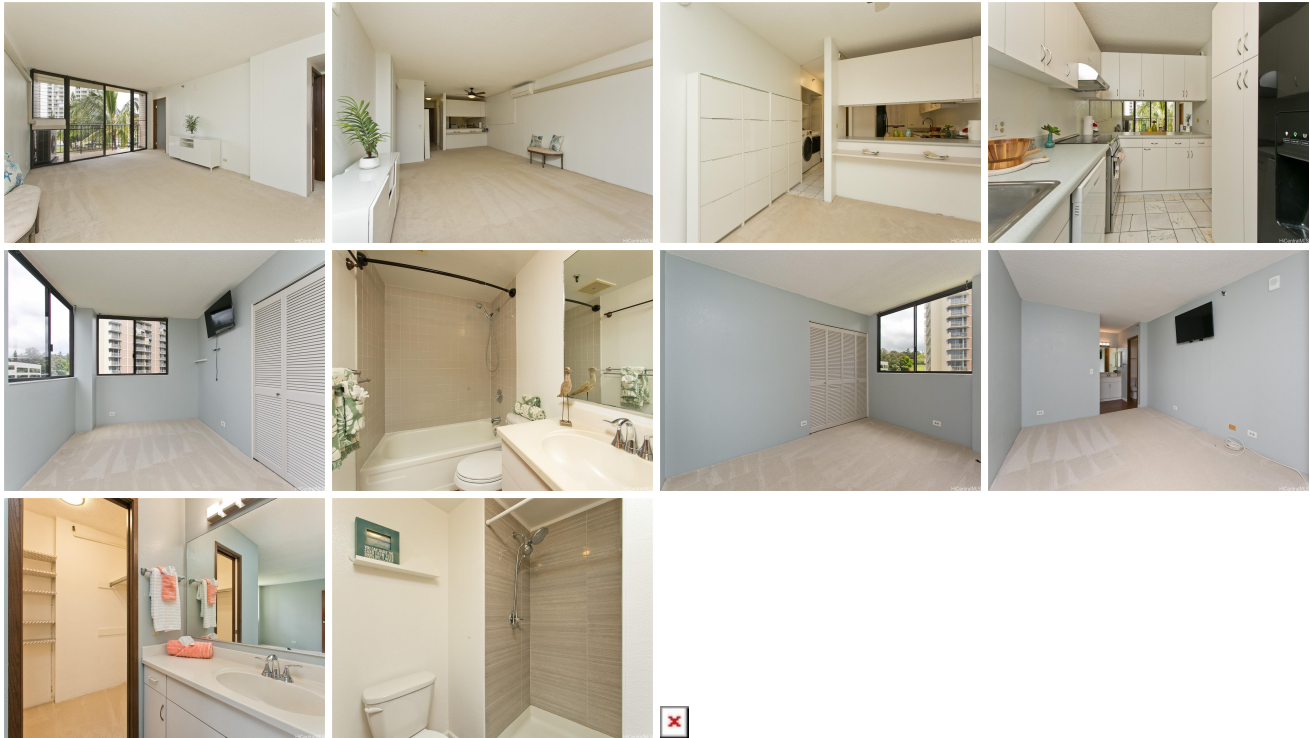
\$580,000

Beds: 3	MLS#: 202411554, FS	Year Built: 1982
Bath: 2/0	Status: Active	Remodeled:
Living Sq. Ft.: 1,175	List Date & DOM: 06-03-2024 & 23	Total Parking: 1
Land Sq. Ft.: 0	Condition: Above Average	Assessed Value
Lanai Sq. Ft.: 57	Frontage:	Building: \$469,200
Sq. Ft. Other: 0	Tax/Year: \$167/2024	Land: \$104,700
Total Sq. Ft. 1,232	Neighborhood: Pearlridge	Total: \$573,900
Maint./Assoc. \$1,153 / \$0	Flood Zone : Zone X - Tool	Stories / CPR: 15-20 / No
Parking: Assigned, Garage, Guest, Open - 1, Secured Entry, Street	Frontage:	

Zoning: 12 - A-2 Medium Density Apartme

View: Mountain

Public Remarks: Priced to sell! Clean bright and move in ready 3 bedroom 2 bath unit at the Park at Pearlridge. Spacious 1157 sq ft of living space with generous sized bedrooms. Split AC unit in the living space. Bathrooms and kitchen have been tastefully updated. Full sized washer/dryer in unit. Additional storage locker available downstairs. Pet friendly. Fire Sprinklers in the unit. Amenities include : swimming pool, tennis courts, bbq area, fitness room, golf practice area, jacuzzi, and more! Conveniently located near freeways, schools, hospitals and right across the street from Pearlridge mall. **Sale Conditions:** None **Schools:** [Scott](#), [Aiea](#), [Aiea](#) * [Request Showing](#), [Photos](#), [History](#), [Maps](#), [Deed](#), [Watch List](#), [Tax Info](#)



Address	Price	Bd & Bth	Living / Avg.	Land Avg.	Lanai	Occ.	FL	DOM
98-487 Koauka Loop B504	\$580,000	3 & 2/0	1,175 \$494	0 \$inf	57	54%	5	23

Address	Tax Maint. Ass.	Assessed Land	Assessed Building	Assessed Total	Ratio	Year & Remodeled
98-487 Koauka Loop B504	\$167 \$1,153 \$0	\$104,700	\$469,200	\$573,900	101%	1982 & NA

[98-487 Koauka Loop B504](#) - MLS#: [202411554](#) - Priced to sell! Clean bright and move in ready 3 bedroom 2 bath unit at the Park at Pearlridge. Spacious 1157 sq ft of living space with generous sized bedrooms. Split AC unit in the living space. Bathrooms and kitchen have been tastefully updated. Full sized washer/dryer in unit. Additional storage locker available downstairs. Pet friendly. Fire Sprinklers in the unit. Amenities include : swimming pool, tennis courts, bbq area, fitness room, golf practice area, jacuzzi, and more! Conveniently located near freeways, schools, hospitals and right across the street from Pearlridge mall. **Region:** Pearl City **Neighborhood:** Pearlridge **Condition:** Above Average **Parking:** Assigned, Garage, Guest, Open - 1, Secured Entry, Street **Total Parking:** 1 **View:** Mountain **Frontage:** **Pool:** **Zoning:** 12 - A-2 Medium Density Apartme **Sale Conditions:** None **Schools:** [Scott](#), [Aiea](#), [Aiea](#) * [Request Showing](#), [Photos](#), [History](#), [Maps](#), [Deed](#), [Watch List](#), [Tax Info](#)

DOM = Days on Market, Occ. = Occupancy, FL = Floor Number