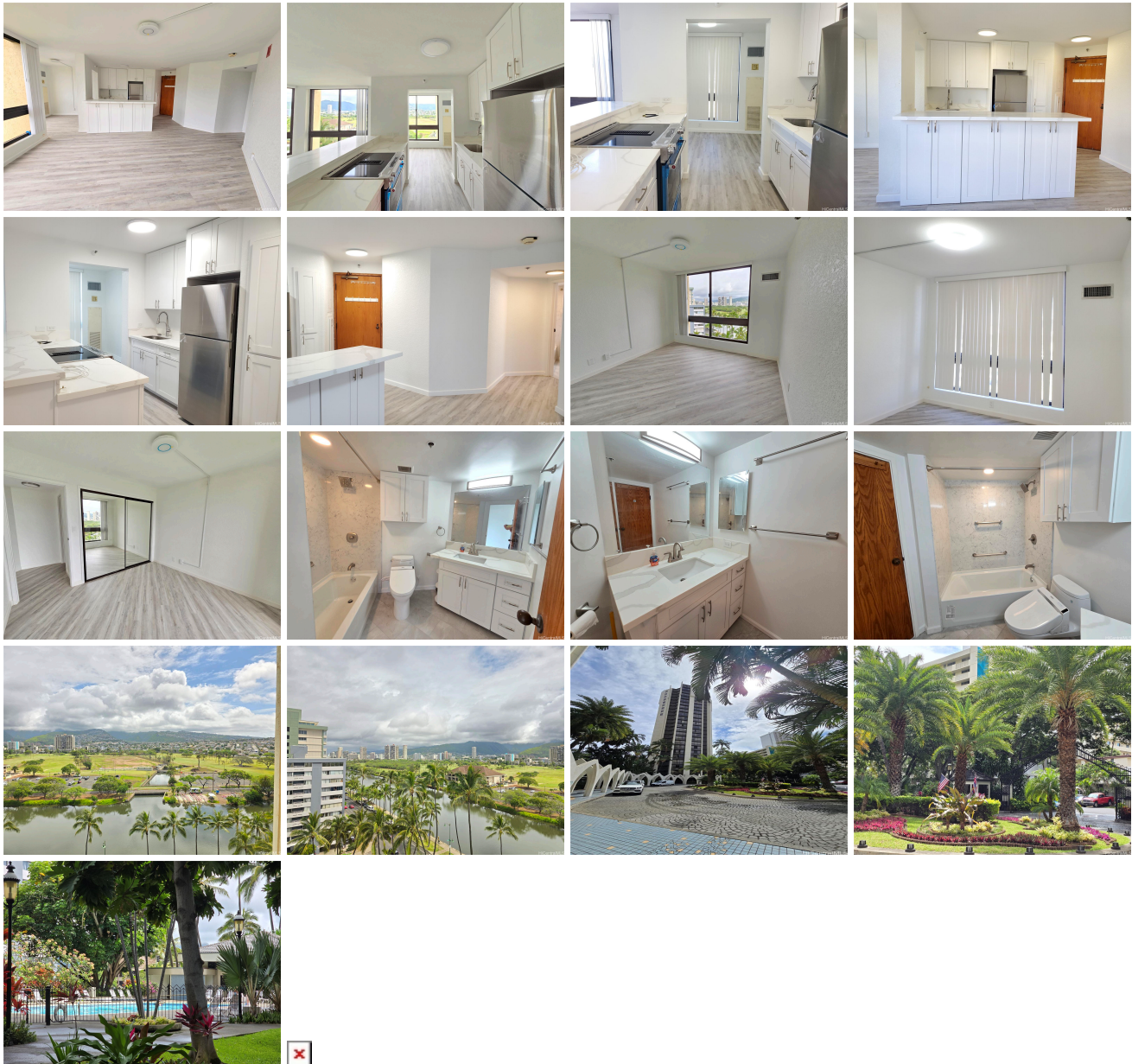


**Liliuokalani Gardens 300 Wai Nani Way Unit 1112, Honolulu 96815 \* Liliuokalani Gardens \***

**\$499,000**

Beds: <b>1</b>	MLS#: <b>202411568, FS</b>	Year Built: <b>1984</b>
Bath: <b>1/0</b>	Status: <b>Active Under Contract</b>	Remodeled:
Living Sq. Ft.: <b>620</b>	List Date & DOM: <b>05-21-2024 &amp; 2</b>	Total Parking: <b>0</b>
Land Sq. Ft.: <b>119,659</b>	Condition: <b>Excellent</b>	<a href="#">Assessed Value</a>
Lanai Sq. Ft.: <b>0</b>	Frontage:	Building: <b>\$370,700</b>
Sq. Ft. Other: <b>0</b>	Tax/Year: <b>\$144/2023</b>	Land: <b>\$122,700</b>
Total Sq. Ft. <b>620</b>	Neighborhood: <b>Waikiki</b>	Total: <b>\$493,400</b>
Maint./Assoc. <b>\$979 / \$0</b>	<a href="#">Flood Zone</a> : <b>Zone AE - Tool</b>	Stories / CPR: <b>21+ / No</b>
Parking: <b>Covered - 1</b>	Frontage:	
<a href="#">Zoning</a> : <b>X2 - Apartment Precinct</b>	View: <b>Garden, Golf Course, Marina/Canal, Mountain</b>	

**Public Remarks:** Must see! This is a completely renovated one-bedroom, One-Bathroom unit on the King Tower! It includes popcorn ceiling removal by a professional expert company. You will be able to see the differences between any other units in this condominium. You have a great view of the mountain and the Ala Wai golf course. The amenities include a large swimming pool, whirlpool, BBQ, tennis courts, and community laundry. Assigned parking is available for \$300 per year through the Association. **Sale Conditions:** None **Schools:** [Jefferson](#), [Washington](#), [Kaimuki](#) \* [Request Showing](#), [Photos](#), [History](#), [Maps](#), [Deed](#), [Watch List](#), [Tax Info](#)



Address	Price	Bd & Bth	Living / Avg.	Land   Avg.	Lanai	Occ.	FL	DOM
<a href="#">300 Wai Nani Way 1112</a>	<a href="#">\$499,000</a>	1 & 1/0	620   \$805	119,659   \$4	0	28%	10	2

Address	Tax   Maint.   Ass.	Assessed Land	Assessed Building	Assessed Total	Ratio	Year & Remodeled
<a href="#">300 Wai Nani Way 1112</a>	\$144   \$979   \$0	\$122,700	\$370,700	\$493,400	101%	1984 & NA

[300 Wai Nani Way 1112](#) - MLS#: [202411568](#) - Must see! This is a completely renovated one-bedroom, One-Bathroom unit on the King Tower! It includes popcorn ceiling removal by a professional expert company. You will be able to see the differences between any other units in this condominium. You have a great view of the mountain and the Ala Wai golf course. The amenities include a large swimming pool, whirlpool, BBQ, tennis courts, and community laundry. Assigned parking is available for \$300 per year through the Association. **Region:** Metro **Neighborhood:** Waikiki **Condition:** Excellent **Parking:** Covered - 1 **Total Parking:** 0 **View:** Garden, Golf Course, Marina/Canal, Mountain **Frontage:** **Pool:** **Zoning:** X2 - Apartment Precinct **Sale Conditions:** None **Schools:** [Jefferson](#), [Washington](#), [Kaimuki](#) \* [Request Showing](#), [Photos](#), [History](#), [Maps](#), [Deed](#), [Watch List](#), [Tax Info](#)

DOM = Days on Market, Occ. = Occupancy, FL = Floor Number