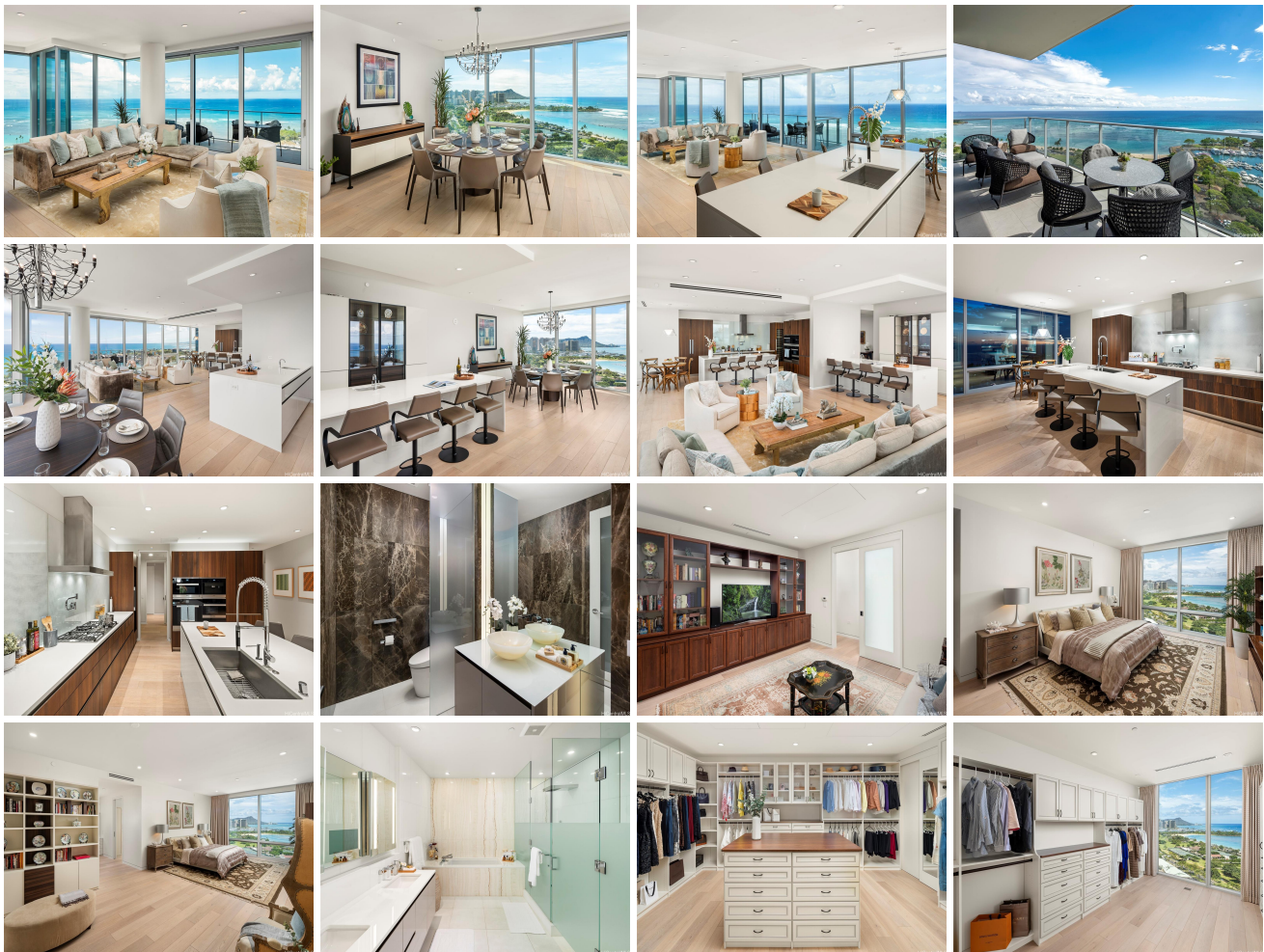


Waiea - 1118 Ala Moana 1118 Ala Moana Boulevard Unit 2000 (00/02 Combined), Honolulu 9814 * Waiea - 1118 Ala Moana * \$12,500,000

Beds: 4	MLS#: 202411679, FS	Year Built: 2016
Bath: 4/1	Status: Active	Remodeled:
Living Sq. Ft.: 4,830	List Date & DOM: 05-28-2024 & 33	Total Parking: 4
Land Sq. Ft.: 0	Condition: Excellent	Assessed Value
Lanai Sq. Ft.: 152	Frontage:	Building: \$9,851,000
Sq. Ft. Other: 0	Tax/Year: \$2,899/2023	Land: \$252,900
Total Sq. Ft. 4,982	Neighborhood: Kakaako	Total: \$10,103,900
Maint./Assoc. \$6,578 / \$0	Flood Zone : Zone AE - Tool	Stories / CPR: 21+ / No
Parking: Assigned, Covered - 3+, Guest, Secured Entry	Frontage:	
Zoning : Kak - Kakaako Community Development Project	View: City, Coastline, Diamond Head, Garden, Mountain, Ocean, Sunset	

Public Remarks: Endless Views... Experience one of Waiea's finest residences w/ this rare double unit combining the preferred "00" & "02" floor plans. This luxury condominium offers lavish living, exceptional amenities & unsurpassed panoramic Diamond Hd, ocean & mountain views capturing sunrise to sunset vistas. An outstanding floor plan provides combined living areas of just under 5,000 sf. Enjoy 4 beautiful bedroom suites all w/ stunning views & full baths, an open layout w/ generous living, dining & entertaining areas + a striking prof kitchen w/ top-of-the-line appliances, dine-in counter seating & large pantry. Added features include a media room/den, large laundry rm, half bath + 4 parking stalls. The Primary Suite is exceptional in size & offers mesmerizing Diamond Hd seascapes, a lounge area, lavish bath & two remarkable walk-in closets. Arrival in an exclusive elevator leads to your private foyer w/ lovely views & welcomes you to this amazing single-story home in the sky. Enjoy Waiea's resort-style amenities including infinity pool w/ocean views, poolside cabanas, BBQ Pavilion, fitness center, chef's kitchen, movie theater, outstanding residential services & more! Spectacular residence! **Sale Conditions:** None **Schools:** [Kaahumanu](#), [Stevenson](#), [Mckinley](#) * [Request Showing](#), [Photos](#), [History](#), [Maps](#), [Deed](#), [Watch List](#), [Tax Info](#)





Address	Price	Bd & Bth	Living / Avg.	Land Avg.	Lanai	Occ.	FL	DOM
1118 Ala Moana Boulevard 2000 (00/02 Combined)	\$12,500,000	4 & 4/1	4,830 \$2,588	0 \$inf	152	35%	20	33

Address	Tax Maint. Ass.	Assessed Land	Assessed Building	Assessed Total	Ratio	Year & Remodeled
1118 Ala Moana Boulevard 2000 (00/02 Combined)	\$2,899 \$6,578 \$0	\$252,900	\$9,851,000	\$10,103,900	124%	2016 & NA

[1118 Ala Moana Boulevard 2000 \(00/02 Combined\)](#) - MLS#: [202411679](#) - Endless Views... Experience one of Waiea's finest residences w/ this rare double unit combining the preferred "00" & "02" floor plans. This luxury condominium offers lavish living, exceptional amenities & unsurpassed panoramic Diamond Hd, ocean & mountain views capturing sunrise to sunset vistas. An outstanding floor plan provides combined living areas of just under 5,000 sf. Enjoy 4 beautiful bedroom suites all w/ stunning views & full baths, an open layout w/generous living, dining & entertaining areas + a striking prof kitchen w/ top-of-the-line appliances, dine-in counter seating & large pantry. Added features include a media room/den, large laundry rm, half bath + 4 parking stalls. The Primary Suite is exceptional in size & offers mesmerizing Diamond Hd seascapes, a lounge area, lavish bath & two remarkable walk-in closets. Arrival in an exclusive elevator leads to your private foyer w/ lovely views & welcomes you to this amazing single-story home in the sky. Enjoy Waiea's resort-style amenities including infinity pool w/ocean views, poolside cabanas, BBQ Pavilion, fitness center, chef's kitchen, movie theater, outstanding residential services & more! Spectacular residence! **Region:** Metro **Neighborhood:** Kakaako **Condition:** Excellent **Parking:** Assigned, Covered - 3+, Guest, Secured Entry **Total Parking:** 4 **View:** City, Coastline, Diamond Head, Garden, Mountain, Ocean, Sunset **Frontage:** Pool: **Zoning:** Kak - Kakaako Community Development Project **Sale Conditions:** None **Schools:** [Kaahumanu](#), [Stevenson](#), [Mckinley](#) * [Request Showing](#), [Photos](#), [History](#), [Maps](#), [Deed](#), [Watch List](#), [Tax Info](#)

DOM = Days on Market, Occ. = Occupancy, FL = Floor Number