

The Collection 600 Ala Moana Boulevard Unit 1205, Honolulu 96813 * The Collection *

\$1,149,000 * Originally \$1,490,000

Beds: **2**
 Bath: **2/0**
 Living Sq. Ft.: **909**
 Land Sq. Ft.: **0**
 Lanai Sq. Ft.: **77**
 Sq. Ft. Other: **0**
 Total Sq. Ft. **986**
 Maint./Assoc. **\$954 / \$0**

MLS#: **202411750, FS**
 Status: **Active**
 List Date & DOM: **05-30-2024 & 31**
 Condition: **Excellent**
 Frontage:
 Tax/Year: **\$253/2023**
 Neighborhood: **Kakaako**
Flood Zone: Zone X - Tool

Year Built: **2016**
 Remodeled:
 Total Parking: **2**
[Assessed Value](#)
 Building: **\$1,003,100**
 Land: **\$64,700**
 Total: **\$1,067,800**
 Stories / CPR: **21+ / No**

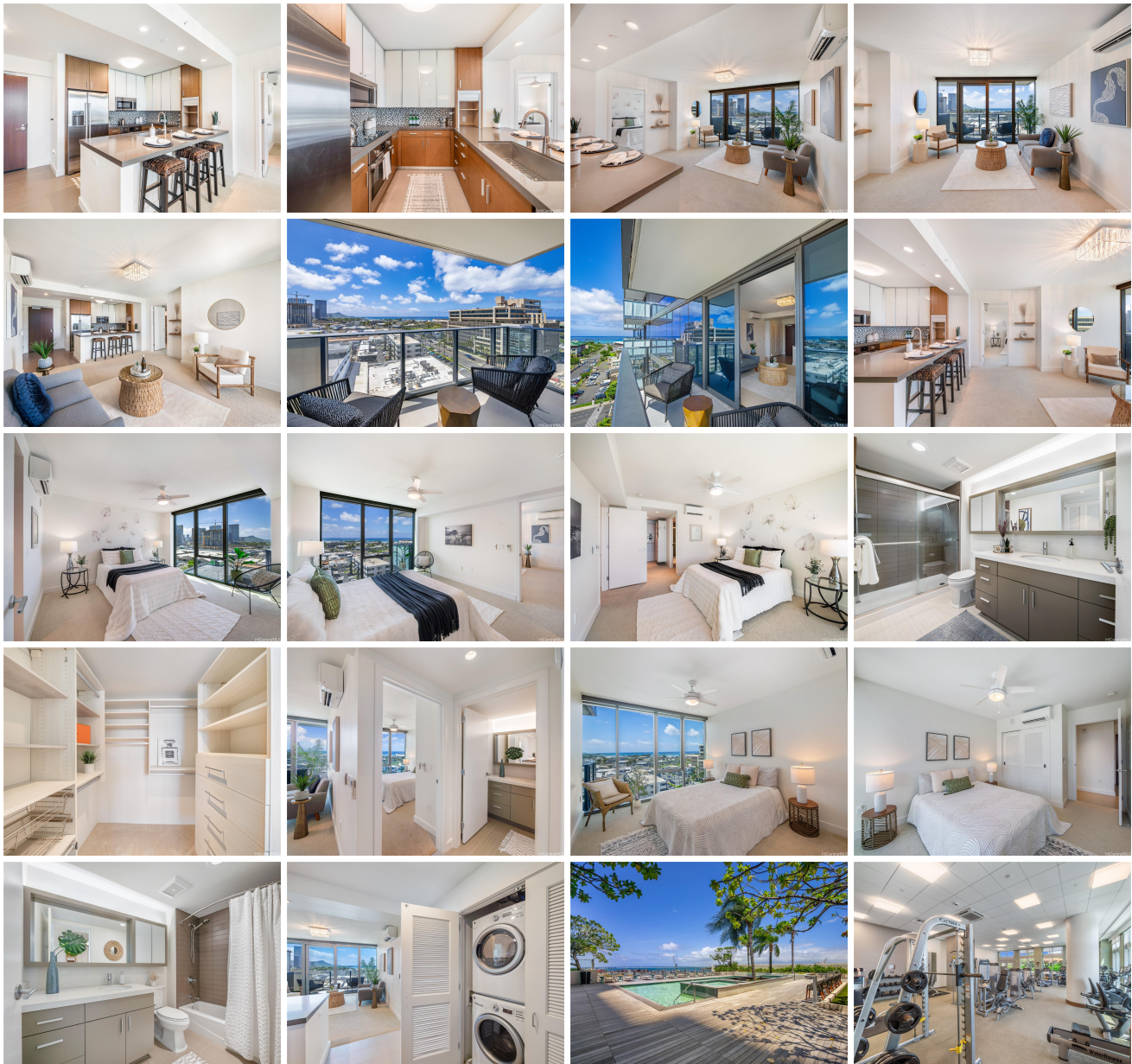
Parking: **Assigned, Covered - 1, Open - 1**

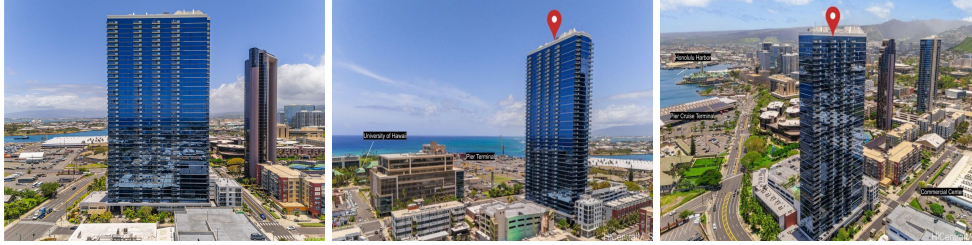
Frontage:

Zoning: Kak - Kakaako Community Development Project

View: **Diamond Head, Mountain, Ocean**

Public Remarks: Step into unparalleled luxury at The Collection, with your exquisite 2-bedroom, 2-bath condo home. This sophisticated, pet friendly residence features sleek, Bosch stainless steel appliances, expansive bedrooms with ocean views and equipped with electric window shades. A private balcony offering incredible Diamondhead, ocean and cityscape views. Indulge in premium amenities including a pristine pool & spa, a full size gym with yoga studio, and a front desk concierge. Perfectly situated just steps from Honolulu's finest restaurants and a short walk to the beach, this home offers the ultimate blend of elegance and convenience plus 2 parking stalls and EV parking. Experience the epitome of upscale urban living in paradise and book your private tour today. Lister must be present for all showings. **Sale Conditions:** None **Schools:** , , * [Request Showing](#), [Photos](#), [History](#), [Maps](#), [Deed](#), [Watch List](#), [Tax Info](#)





Address	Price	Bd & Bth	Living / Avg.	Land Avg.	Lanai	Occ.	FL	DOM
600 Ala Moana Boulevard 1205	\$1,149,000	2 & 2/0	909 \$1,264	0 \$inf	77	51%	12	31

Address	Tax Maint. Ass.	Assessed Land	Assessed Building	Assessed Total	Ratio	Year & Remodeled
600 Ala Moana Boulevard 1205	\$253 \$954 \$0	\$64,700	\$1,003,100	\$1,067,800	108%	2016 & NA

[600 Ala Moana Boulevard 1205](#) - MLS#: [202411750](#) - Original price was \$1,490,000 - Step into unparalleled luxury at The Collection, with your exquisite 2-bedroom, 2-bath condo home. This sophisticated, pet friendly residence features sleek, Bosch stainless steel appliances, expansive bedrooms with ocean views and equipped with electric window shades. A private balcony offering incredible Diamondhead, ocean and cityscape views. Indulge in premium amenities including a pristine pool & spa, a full size gym with yoga studio, and a front desk concierge. Perfectly situated just steps from Honolulu's finest restaurants and a short walk to the beach, this home offers the ultimate blend of elegance and convenience plus 2 parking stalls and EV parking. Experience the epitome of upscale urban living in paradise and book your private tour today. Listor must be present for all showings. **Region:** Metro **Neighborhood:** Kakaako **Condition:** Excellent **Parking:** Assigned, Covered - 1, Open - 1 **Total Parking:** 2 **View:** Diamond Head, Mountain, Ocean **Frontage:** **Pool:** **Zoning:** Kak - Kakaako Community Development Project **Sale Conditions:** None **Schools:** , , * [Request Showing](#), [Photos](#), [History](#), [Maps](#), [Deed](#), [Watch List](#), [Tax Info](#)

DOM = Days on Market, Occ. = Occupancy, FL = Floor Number