

Poha Kea Point 4 46-040 Konane Place Unit 3812, Kaneohe 96744 * Poha Kea Point 4 *

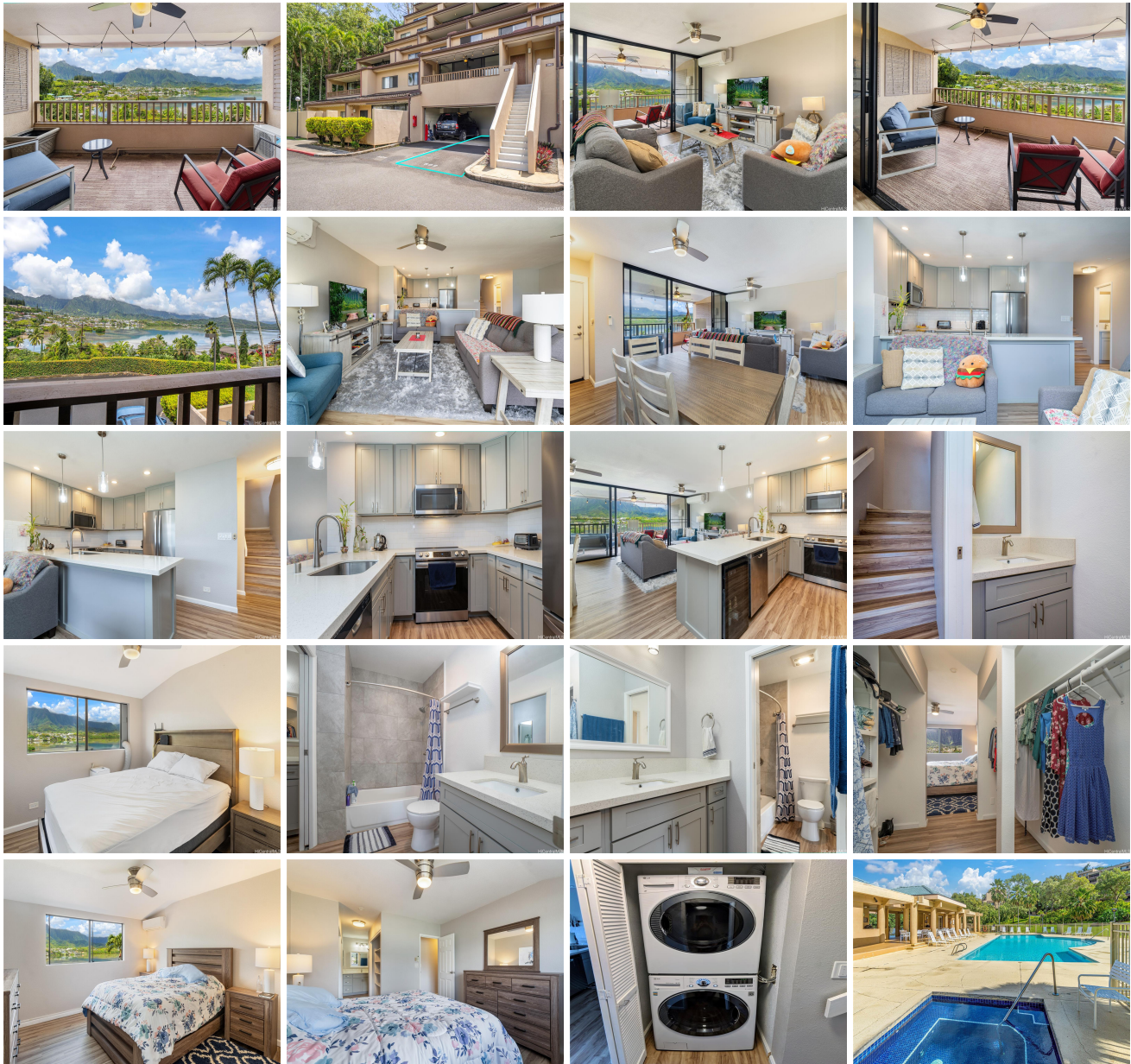
\$828,000 * Originally \$848,000

Beds: 2	MLS#: 202411786, FS	Year Built: 1990
Bath: 1/1	Status: Active	Remodeled:
Living Sq. Ft.: 1,001	List Date & DOM: 05-29-2024 & 28	Total Parking: 2
Land Sq. Ft.: 108,072	Condition: Excellent	Assessed Value
Lanai Sq. Ft.: 123	Frontage: Other	Building: \$626,800
Sq. Ft. Other: 0	Tax/Year: \$238/2023	Land: \$188,800
Total Sq. Ft. 1,124	Neighborhood: Lilipuna	Total: \$815,600
Maint./Assoc. \$470 / \$622	Flood Zone : Zone X - Tool	Stories / CPR: Two, 4-7 / No
Parking: Assigned, Covered - 1, Garage, Open - 1, Tandem	Frontage: Other	

Zoning: 03 - R10 - Residential District

View: **Coastline, Mountain, Ocean, Sunrise**

Public Remarks: Breathtaking ocean and Ko'olau mountain views from this beautiful and highly updated unit in the pet friendly, Poha Kea Point. Truly one of the best location in the development! Enjoy dinner or a snack on your large private lanai overlooking the picturesque Pacific Ocean. Split level unit featuring 2 bedroom, 1.5 bathrooms plus 2 parking stalls (1 car enclosed garage and 1 tandem open parking). Upgrades include split A/C units in the living room and primary bedroom. LVP (Luxury Vinyl Plank) floors throughout the whole home. Remodeled eat-in kitchen with Quartz counter tops and stainless steel appliances. Bathrooms have been renovated as well with new vanities, tile shower and more! Washer and dryer in the unit! Must see to appreciate! Enjoy resort style amenities including a swimming pool, hot tub, tennis courts, club house, BBQ and lots of guest parking! Conveniently located near Windward Mall, shopping, groceries, restaurants, Marine Corps Base Hawaii plus easy access to H-3 and an easy commute to Joint Base Pearl Harbor Hickam. 2.25% assumable VA loan for VA eligible buyers. **Sale Conditions:** None **Schools:** , , * [Request Showing](#), [Photos](#), [History](#), [Maps](#), [Deed](#), [Watch List](#), [Tax Info](#)





Address	Price	Bd & Bth	Living / Avg.	Land Avg.	Lanai	Occ.	FL	DOM
46-040 Konane Place 3812	\$828,000	2 & 1/1	1,001 \$827	108,072 \$8	123	49%	2	28

Address	Tax Maint. Ass.	Assessed Land	Assessed Building	Assessed Total	Ratio	Year & Remodeled
46-040 Konane Place 3812	\$238 \$470 \$622	\$188,800	\$626,800	\$815,600	102%	1990 & NA

[46-040 Konane Place 3812](#) - MLS#: [202411786](#) - Original price was \$848,000 - Breathtaking ocean and Ko'olau mountain views from this beautiful and highly updated unit in the pet friendly, Poha Kea Point. Truly one of the best location in the development! Enjoy dinner or a snack on your large private lanai overlooking the picturesque Pacific Ocean. Split level unit featuring 2 bedroom, 1.5 bathrooms plus 2 parking stalls (1 car enclosed garage and 1 tandem open parking). Upgrades include split A/C units in the living room and primary bedroom. LVP (Luxury Vinyl Plank) floors throughout the whole home. Remodeled eat-in kitchen with Quartz counter tops and stainless steel appliances. Bathrooms have been renovated as well with new vanities, tile shower and more! Washer and dryer in the unit! Must see to appreciate! Enjoy resort style amenities including a swimming pool, hot tub, tennis courts, club house, BBQ and lots of guest parking! Conveniently located near Windward Mall, shopping, groceries, restaurants, Marine Corps Base Hawaii plus easy access to H-3 and an easy commute to Joint Base Pearl Harbor Hickam. 2.25% assumable VA loan for VA eligible buyers. **Region:** Kaneohe **Neighborhood:** Lilipuna **Condition:** Excellent **Parking:** Assigned, Covered - 1, Garage, Open - 1, Tandem **Total Parking:** 2 **View:** Coastline, Mountain, Ocean, Sunrise **Frontage:** Other **Pool:** **Zoning:** 03 - R10 - Residential District **Sale Conditions:** None **Schools:** , * [Request Showing](#), [Photos](#), [History](#), [Maps](#), [Deed](#), [Watch List](#), [Tax Info](#)

DOM = Days on Market, Occ. = Occupancy, FL = Floor Number