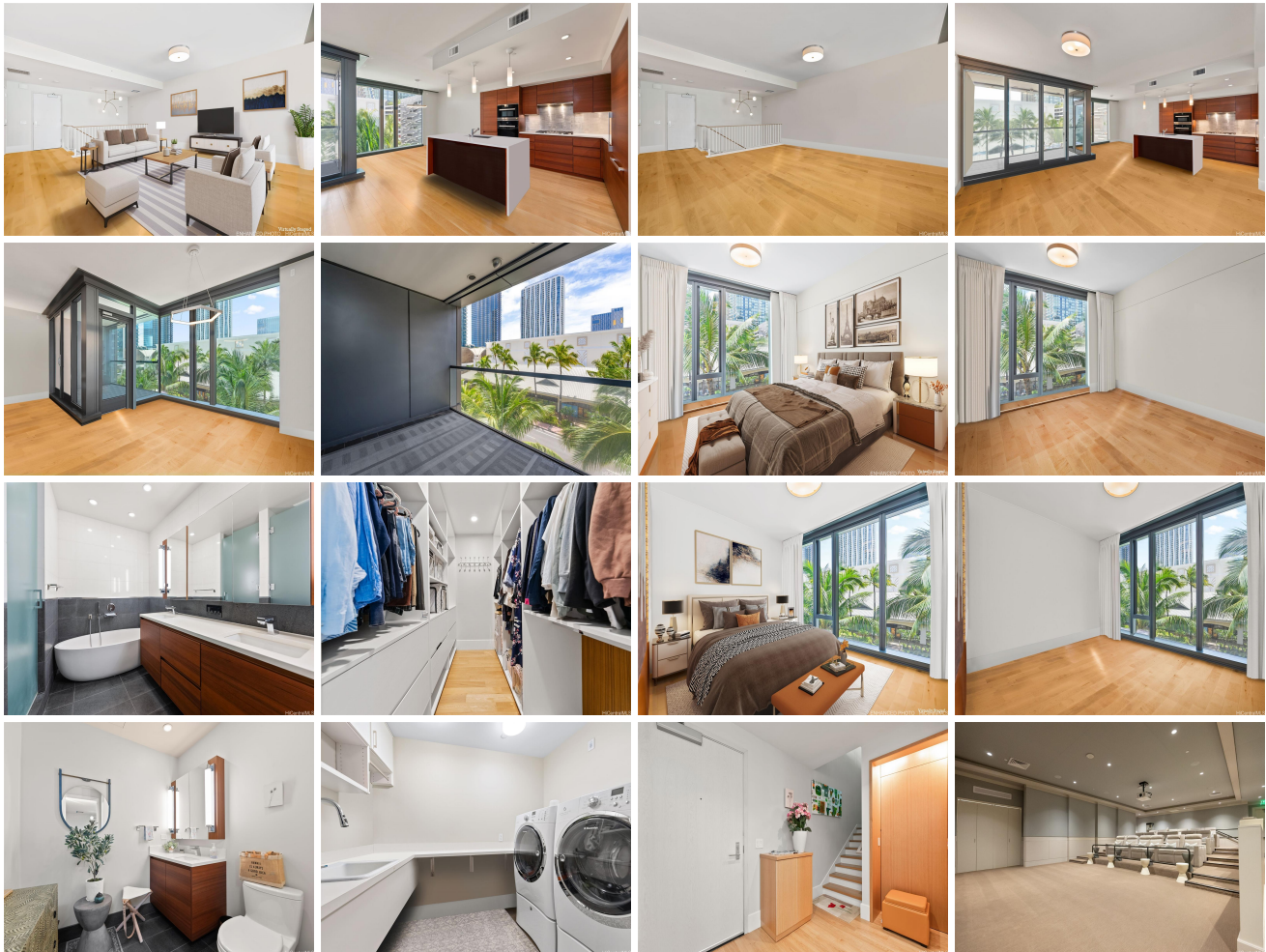


Anaha - 1108 Auahi 1108 Auahi Street Unit 304, Honolulu 96814 * Anaha - 1108 Auahi *

\$1,850,000 * Originally \$1,900,000

Beds: 2	MLS#: 202411792, FS	Year Built: 2017
Bath: 2/1	Status: Active	Remodeled:
Living Sq. Ft.: 1,597	List Date & DOM: 05-22-2024 & 54	Total Parking: 2
Land Sq. Ft.: 0	Condition: Excellent, Above Average	Assessed Value
Lanai Sq. Ft.: 93	Frontage:	Building: \$1,545,700
Sq. Ft. Other: 0	Tax/Year: \$452/2024	Land: \$79,000
Total Sq. Ft. 1,690	Neighborhood: Kakaako	Total: \$1,624,700
Maint./Assoc. \$2,547 / \$0	Flood Zone : Zone AE - Tool	Stories / CPR: / No
Parking: Assigned, Covered - 1, Garage, Guest, Secured Entry	Frontage:	
Zoning : Kak - Kakaako Community Development Project	View: City, Sunset	

Public Remarks: Welcome to Anaha, one of Kakaako's most iconic towers, the epitome of luxury condo living in vibrant Ward Village. Step into this rare split-level unit, nearly 1,600 square feet of interior space complemented by a 93-square-foot lanai—a rarity in today's market. Inside, enjoy exquisite hardwood floors, a Studio Becker kitchen equipped with Miele appliances and quartz countertops, a wine refrigerator, and floor-to-ceiling windows filling your home with natural light. The expansive layout and thoughtful design elements make this unit feel more like a single-family home than a condo. The large primary bedroom is a sanctuary, boasting a huge walk-in closet and a luxurious bathroom featuring a relaxing soaking tub - not common in other Honolulu developments. Adding to the allure is the inclusion of GARAGE parking, complete with custom cabinets for one vehicle, and another stall located just outside. Anaha residents access an unparalleled array of amenities -- glass-bottom pool, tennis & volleyball courts, fitness gym, sauna, movie theater, golf simulator, BBQ stations, private dining areas, guest suites, and more. Priced to move, come experience the height of luxury living at Anaha! **Sale Conditions:** None
Schools: [Kaahumanu](#), [Stevenson](#), [Mckinley](#) * [Request Showing](#), [Photos](#), [History](#), [Maps](#), [Deed](#), [Watch List](#), [Tax Info](#)





Address	Price	Bd & Bth	Living / Avg.	Land Avg.	Lanai	Occ.	FL	DOM
1108 Auahi Street 304	\$1,850,000	2 & 2/1	1,597 \$1,158	0 \$inf	93	72%	3	54

Address	Tax Maint. Ass.	Assessed Land	Assessed Building	Assessed Total	Ratio	Year & Remodeled
1108 Auahi Street 304	\$452 \$2,547 \$0	\$79,000	\$1,545,700	\$1,624,700	114%	2017 & NA

[1108 Auahi Street 304](#) - MLS#: [202411792](#) - Original price was \$1,900,000 - Welcome to Anaha, one of Kakaako's most iconic towers, the epitome of luxury condo living in vibrant Ward Village. Step into this rare split-level unit, nearly 1,600 square feet of interior space complemented by a 93-square-foot lanai—a rarity in today's market. Inside, enjoy exquisite hardwood floors, a Studio Becker kitchen equipped with Miele appliances and quartz countertops, a wine refrigerator, and floor-to-ceiling windows filling your home with natural light. The expansive layout and thoughtful design elements make this unit feel more like a single-family home than a condo. The large primary bedroom is a sanctuary, boasting a huge walk-in closet and a luxurious bathroom featuring a relaxing soaking tub - not common in other Honolulu developments. Adding to the allure is the inclusion of GARAGE parking, complete with custom cabinets for one vehicle, and another stall located just outside. Anaha residents access an unparalleled array of amenities -- glass-bottom pool, tennis & volleyball courts, fitness gym, sauna, movie theater, golf simulator, BBQ stations, private dining areas, guest suites, and more. Priced to move, come experience the height of luxury living at Anaha! **Region:** Metro **Neighborhood:** Kakaako **Condition:** Excellent, Above Average **Parking:** Assigned, Covered - 1, Garage, Guest, Secured Entry **Total Parking:** 2 **View:** City, Sunset **Frontage:** **Pool:** **Zoning:** Kak - Kakaako Community Development Project **Sale Conditions:** None **Schools:** [Kaahumanu](#), [Stevenson](#), [Mckinley](#) * [Request Showing](#), [Photos](#), [History](#), [Maps](#), [Deed](#), [Watch List](#), [Tax Info](#)

DOM = Days on Market, Occ. = Occupancy, FL = Floor Number