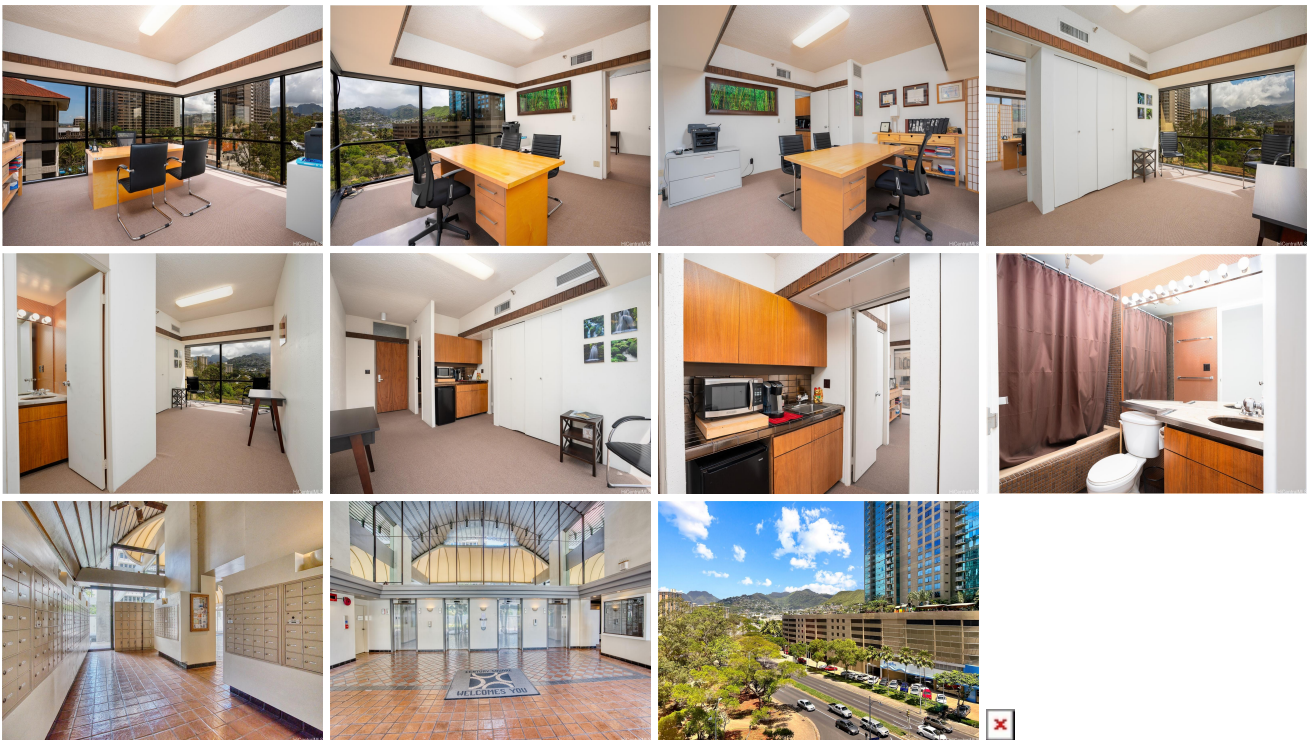


Century Square 1188 Bishop Street Unit 708, Honolulu 96813 * Century Square * \$59,000

Beds: 1	MLS#: 202411803, LH	Year Built: 1981
Bath: 1/0	Status: Active	Remodeled:
Living Sq. Ft.: 500	List Date & DOM: 05-23-2024 & 33	Total Parking: 0
Land Sq. Ft.: 0	Condition: Average	Assessed Value
Lanai Sq. Ft.: 0	Frontage:	Building: \$122,100
Sq. Ft. Other: 0	Tax/Year: \$150/2024	Land: \$23,100
Total Sq. Ft. 500	Neighborhood: Downtown	Total: \$145,200
Maint./Assoc. \$615 / \$0	Flood Zone : Zone X - Tool	Stories / CPR: 21+ / No
Parking: Covered - 1, Guest, Unassigned	Frontage:	
Zoning : 34 - BMX-4 Central Business Mix	View: City, Mountain	

Public Remarks: Welcome to CENTURY SQUARE in Downtown Honolulu on the corner of Bishop and Beretania Street. This executive, 500 sq. ft. corner suite features a private full bathroom and comes with one unassigned parking stall. Guest parking is available by validation. The maintenance fee includes central A/C, water, hot water, sewer, and janitorial services (daily trash collection and weekly general cleaning). Great office location in the financial district of Honolulu, near banks, shops, restaurants and entertainment venues. **Sale Conditions:** None **Schools:** , , * [Request Showing](#), [Photos](#), [History](#), [Maps](#), [Deed](#), [Watch List](#), [Tax Info](#)



Address	Price	Bd & Bth	Living / Avg.	Land Avg.	Lanai	Occ.	FL	DOM
1188 Bishop Street 708	\$59,000 LH	1 & 1/0	500 \$118	0 \$inf	0	37%	7	33

Address	Tax Maint. Ass.	Assessed Land	Assessed Building	Assessed Total	Ratio	Year & Remodeled
1188 Bishop Street 708	\$150 \$615 \$0	\$23,100	\$122,100	\$145,200	41%	1981 & NA

[1188 Bishop Street 708](#) - MLS#: [202411803](#) - Welcome to CENTURY SQUARE in Downtown Honolulu on the corner of Bishop and Beretania Street. This executive, 500 sq. ft. corner suite features a private full bathroom and comes with one unassigned parking stall. Guest parking is available by validation. The maintenance fee includes central A/C, water, hot water, sewer, and janitorial services (daily trash collection and weekly general cleaning). Great office location in the financial district of Honolulu, near banks, shops, restaurants and entertainment venues. **Region:** Metro **Neighborhood:** Downtown **Condition:** Average **Parking:** Covered - 1, Guest, Unassigned **Total Parking:** 0 **View:** City, Mountain **Frontage:** Pool: **Zoning:** 34 - BMX-4 Central Business Mix **Sale Conditions:** None **Schools:** , , * [Request Showing](#), [Photos](#), [History](#), [Maps](#), [Deed](#), [Watch List](#), [Tax Info](#)

DOM = Days on Market, Occ. = Occupancy, FL = Floor Number