

Waikiki Beach Tower 2470 Kalakaua Avenue Unit 2703, Honolulu 96815 * Waikiki Beach

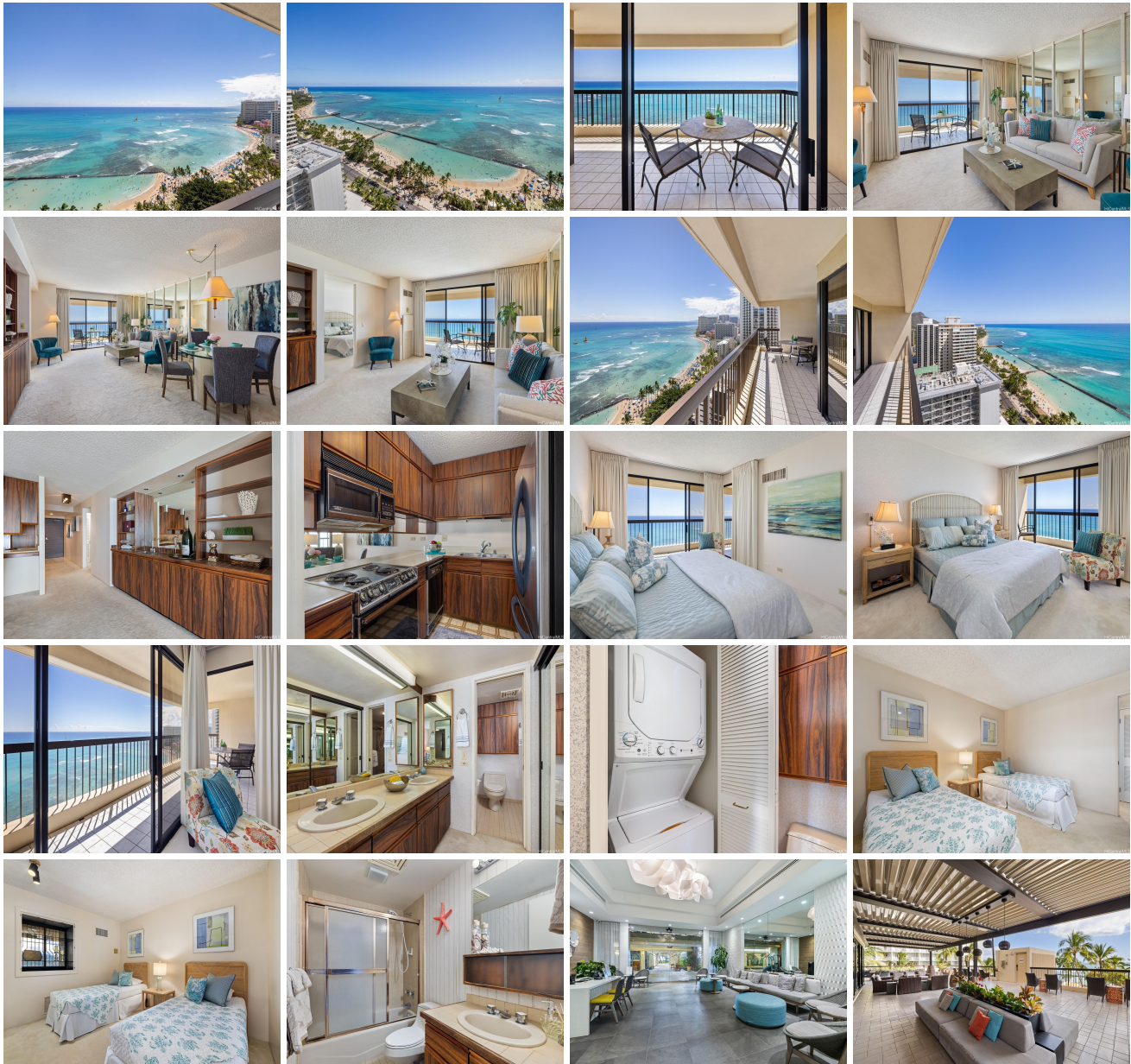
Tower * \$2,500,000

Beds: 2	MLS#: 202411830, FS	Year Built: 1983
Bath: 2/0	Status: Active Under Contract	Remodeled:
Living Sq. Ft.: 1,025	List Date & DOM: 05-23-2024 & 5	Total Parking: 2
Land Sq. Ft.: 24,045	Condition: Fair	Assessed Value
Lanai Sq. Ft.: 171	Frontage:	Building: \$1,715,700
Sq. Ft. Other: 0	Tax/Year: \$1,329/2024	Land: \$218,900
Total Sq. Ft. 1,196	Neighborhood: Waikiki	Total: \$1,934,600
Maint./Assoc. \$2,241 / \$0	Flood Zone : Zone X - Tool	Stories / CPR: 21+ / No
Parking: Assigned, Covered - 2, Guest, Tandem	Frontage:	

Zoning: X6 - Resort Mixed Use Precinct

View: City, Coastline, Ocean, Sunset

Public Remarks: Experience the ultimate Hawaiian luxury lifestyle at Waikiki Beach Tower! Situated right across from Waikiki Beach, this apartment offers stunning panoramic views of the ocean, sandy beaches, and famous landmarks like the Royal Hawaiian Hotel. Featuring a spacious 2-bedroom, 2-bathroom layout with approximately 1,025 square feet of space, plus a large lanai of about 171 square feet, you'll cherish every moment enjoying Hawaii's paradise. Convenience and luxury come together in this unbeatable location, putting everything Waikiki has to offer within easy reach. From dining options to shopping, entertainment, and a variety of beach activities like surfing and water sports, every day brings a new adventure just steps from your door. Don't miss out on the opportunity to make Waikiki Beach Tower your home—a true oasis amidst the lively atmosphere of Waikiki. **Sale Conditions:** None **Schools:** , , * [Request Showing](#), [Photos](#), [History](#), [Maps](#), [Deed](#), [Watch List](#), [Tax Info](#)





Address	Price	Bd & Bth	Living / Avg.	Land Avg.	Lanai	Occ.	FL	DOM
2470 Kalakaua Avenue 2703	\$2,500,000	2 & 2/0	1,025 \$2,439	24,045 \$104	171	0%	27	5

Address	Tax Maint. Ass.	Assessed Land	Assessed Building	Assessed Total	Ratio	Year & Remodeled
2470 Kalakaua Avenue 2703	\$1,329 \$2,241 \$0	\$218,900	\$1,715,700	\$1,934,600	129%	1983 & NA

[2470 Kalakaua Avenue 2703](#) - MLS#: [202411830](#) - Experience the ultimate Hawaiian luxury lifestyle at Waikiki Beach Tower! Situated right across from Waikiki Beach, this apartment offers stunning panoramic views of the ocean, sandy beaches, and famous landmarks like the Royal Hawaiian Hotel. Featuring a spacious 2-bedroom, 2-bathroom layout with approximately 1,025 square feet of space, plus a large lanai of about 171 square feet, you'll cherish every moment enjoying Hawaii's paradise. Convenience and luxury come together in this unbeatable location, putting everything Waikiki has to offer within easy reach. From dining options to shopping, entertainment, and a variety of beach activities like surfing and water sports, every day brings a new adventure just steps from your door. Don't miss out on the opportunity to make Waikiki Beach Tower your home—a true oasis amidst the lively atmosphere of Waikiki. **Region:** Metro **Neighborhood:** Waikiki **Condition:** Fair **Parking:** Assigned, Covered - 2, Guest, Tandem **Total Parking:** 2 **View:** City, Coastline, Ocean, Sunset **Frontage:** Pool **Zoning:** X6 - Resort Mixed Use Precinct **Sale Conditions:** None **Schools:** , , * [Request Showing](#), [Photos](#), [History](#), [Maps](#), [Deed](#), [Watch List](#), [Tax Info](#)

DOM = Days on Market, Occ. = Occupancy, FL = Floor Number