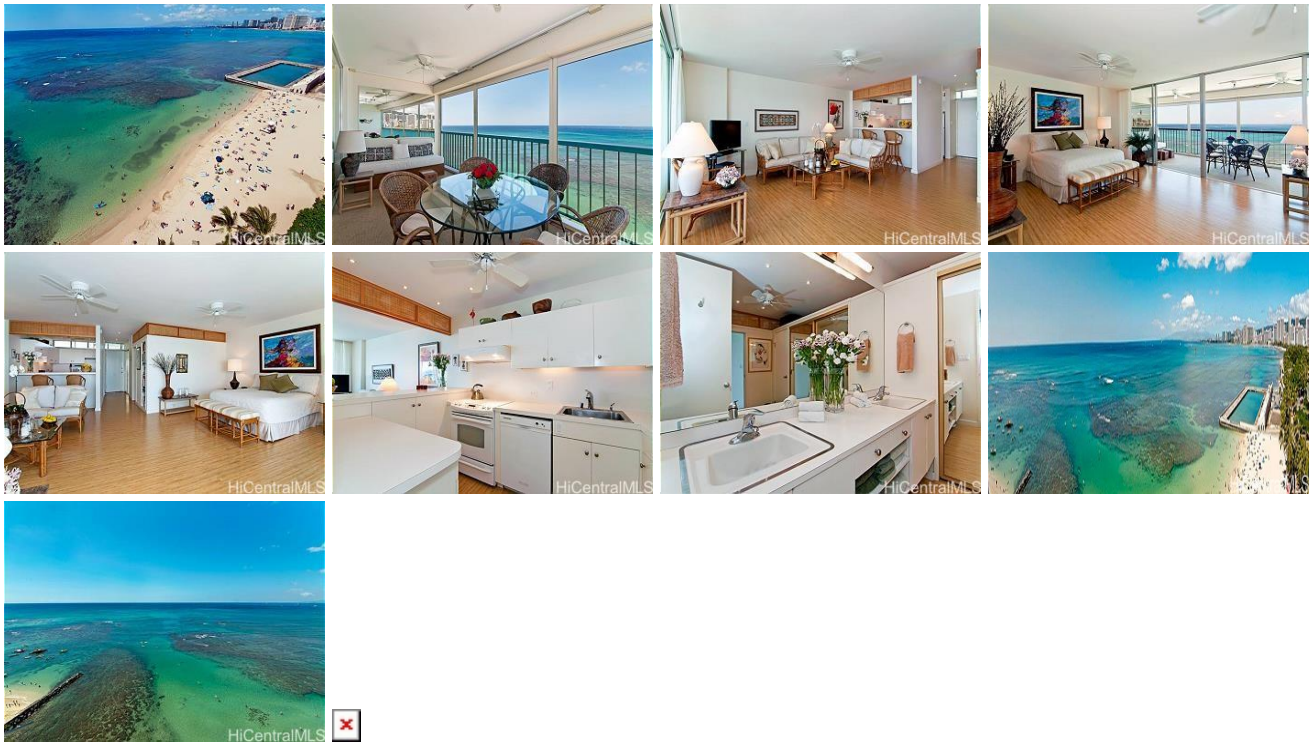


Sans Souci Inc 2877 Kalakaua Avenue Unit 1105, Honolulu 96815 * Sans Souci Inc *

\$1,169,000

Beds: 1	MLS#: 202411862, LH	Year Built: 1960
Bath: 1/0	Status: Active	Remodeled:
Living Sq. Ft.: 718	List Date & DOM: 05-23-2024 & 53	Total Parking: 1
Land Sq. Ft.: 0	Condition: Average	Assessed Value
Lanai Sq. Ft.: 232	Frontage: Ocean	Building: \$1,311,600
Sq. Ft. Other: 0	Tax/Year: \$0/2023	Land: \$124,600
Total Sq. Ft. 950	Neighborhood: Diamond Head	Total: \$1,436,200
Maint./Assoc. \$1,106 / \$3,336	Flood Zone : Zone AE - Tool	Stories / CPR: 8-14 / No
Parking: Assigned, Covered - 1	Frontage: Ocean	
Zoning : 12 - A-2 Medium Density Apartme	View: Coastline, Diamond Head, Ocean, Sunset	

Public Remarks: Welcome to The Sans Souci- a one of a kind beachfront building located directly on Kaimana Beach on the Gold Coast of Waikiki. You are just steps away from the beautiful white sands of the beach and can enjoy swimming, paddling, or enjoying a good book while working on your tan. This building is curved so you not only get spectacular views of the coastline but also of Waikiki. This also allows the trade winds to flow through the unit. From your large lanai you can enjoy the fireworks every Friday evening from the Hilton Hawaiian Village. This unit can accommodate you and your friends in a California King bed, and on the lanai a queen, and twin size platform bed. This unit has a remodeled shower, and light colored laminate floors throughout. All furniture and appliances are also included. The unit also comes with one ground level, covered parking stall. Out side of your front door you have beautiful views of Diamond Head and Kapiolani Park, where you can enjoy a number of activities, or a quiet picnic. The Sans Souci is also steps away from three wonderful restaurants in either the Kaimana Beach Hotel, The Lotus Hotel, or in the lobby of the Colony Surf. **Sale Conditions:** None **Schools:** [Waikiki](#), [Washington](#), [Kaimuki](#) * [Request Showing](#), [Photos](#), [History](#), [Maps](#), [Deed](#), [Watch List](#), [Tax Info](#)



Address	Price	Bd & Bth	Living / Avg.	Land Avg.	Lanai	Occ.	FL	DOM
2877 Kalakaua Avenue 1105	\$1,169,000 LH	1 & 1/0	718 \$1,628	0 \$inf	232	22%	11	53

Address	Tax Maint. Ass.	Assessed Land	Assessed Building	Assessed Total	Ratio	Year & Remodeled
2877 Kalakaua Avenue 1105	\$0 \$1,106 \$3,336	\$124,600	\$1,311,600	\$1,436,200	81%	1960 & NA

[2877 Kalakaua Avenue 1105](#) - MLS#: [202411862](#) - Welcome to The Sans Souci- a one of a kind beachfront building located directly on Kaimana Beach on the Gold Coast of Waikiki. You are just steps away from the beautiful white sands of the beach and can enjoy swimming, paddling, or enjoying a good book while working on your tan. This building is curved so you not only get spectacular views of the coastline but also of Waikiki. This also allows the trade winds to flow through the unit. From your large lanai you can enjoy the fireworks every Friday evening from the Hilton Hawaiian Village. This unit can accommodate you and your friends in a California King bed, and on the lanai a queen, and twin size platform bed. This unit has a remodeled shower, and light colored laminate floors throughout. All furniture and appliances are also included. The unit also comes with one ground level, covered parking stall. Out side of your front door you have beautiful views of Diamond Head and Kapiolani Park, where you can enjoy a number of activities, or a quiet picnic. The Sans Souci is also steps away from three wonderful restaurants in either the Kaimana Beach Hotel, The Lotus Hotel, or in the lobby of the Colony Surf.

Region: Diamond Head **Neighborhood:** Diamond Head **Condition:** Average **Parking:** Assigned, Covered - 1 **Total Parking:** 1 **View:** Coastline, Diamond Head, Ocean, Sunset **Frontage:** Ocean **Pool:** **Zoning:** 12 - A-2 Medium Density Apartme **Sale Conditions:** None **Schools:** [Waikiki](#), [Washington](#), [Kaimuki](#) * [Request Showing](#), [Photos](#), [History](#), [Maps](#), [Deed](#), [Watch List](#), [Tax Info](#)

DOM = Days on Market, Occ. = Occupancy, FL = Floor Number