

**Villa On Eaton Square 400 Hobron Lane Unit 701, Honolulu 96815 \* Villa On Eaton Square \***

**\$520,000**

Beds: **1**  
 Bath: **1/0**  
 Living Sq. Ft.: **747**  
 Land Sq. Ft.: **104,718**  
 Lanai Sq. Ft.: **70**  
 Sq. Ft. Other: **0**  
 Total Sq. Ft. **817**  
 Maint./Assoc. **\$1,077 / \$0**

MLS#: **202411868, FS**  
 Status: **Active**  
 List Date & DOM: **05-22-2024 & 35**  
 Condition: **Excellent**  
 Frontage: **Other**  
 Tax/Year: **\$139/2023**  
 Neighborhood: **Waikiki**  
**Flood Zone: Zone AO - Tool**

Year Built: **1974**  
 Remodeled:  
 Total Parking: **1**  
[Assessed Value](#)  
 Building: **\$402,500**  
 Land: **\$76,500**  
 Total: **\$479,000**  
 Stories / CPR: / **No**

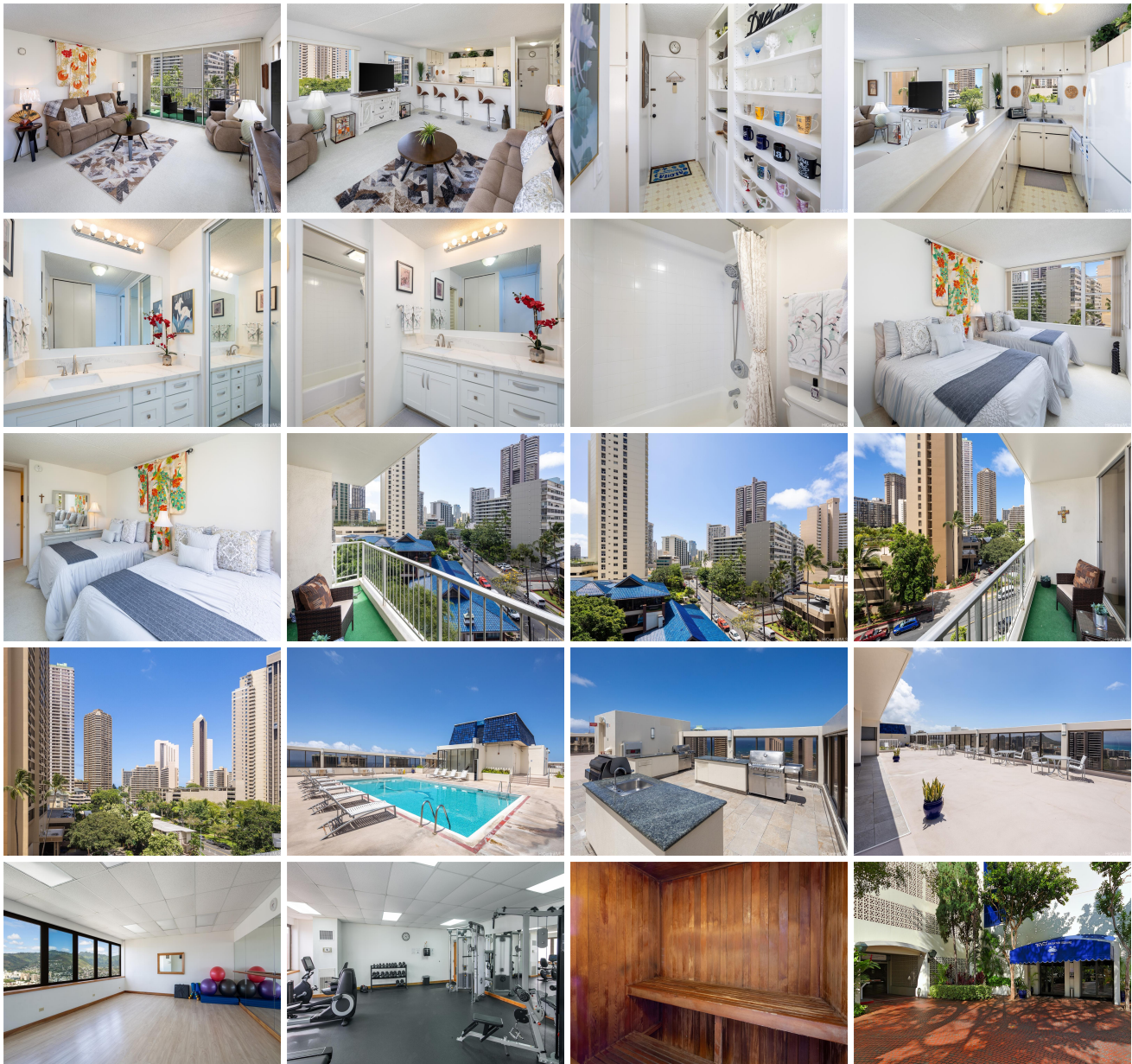
Parking: **Covered - 1, Secured Entry, Street, Unassigned**

Frontage: **Other**

**Zoning: X2 - Apartment Precinct**

View: **City, Ocean, Sunset**

**Public Remarks:** Rare unit in the most-desirable '01 corner stack' in the Villa on Eaton Square which offers 10% more space. This gem features an inviting open floor plan and three expansive panoramic windows that infuse the living area with natural light. Soak in the breathtaking views of the city, mountains and sunset from your own balcony. The many amenities include a pet-friendly policy, heated pool, sauna, BBQ area, gym and yoga room. The HOA fees include central AC, electricity, water, sewer, 24-hour security, storage and 1 parking space. Eaton Square is in the edge of Waikiki where you are moments away from Ala Moana Shopping Center, Ala Moana beach, world-class restaurants, Magic Island, Ala Wai Boat Harbor and more! Call your Realtor and Schedule your private showing today! **Sale Conditions:** None **Schools:** , , \* [Request Showing](#), [Photos](#), [History](#), [Maps](#), [Deed](#), [Watch List](#), [Tax Info](#)





Address	Price	Bd & Bth	Living / Avg.	Land   Avg.	Lanai	Occ.	FL	DOM
<a href="#">400 Hobron Lane 701</a>	<a href="#">\$520,000</a>	1 & 1/0	747   \$696	104,718   \$5	70	48%	7	35

Address	Tax   Maint.   Ass.	Assessed Land	Assessed Building	Assessed Total	Ratio	Year & Remodeled
<a href="#">400 Hobron Lane 701</a>	\$139   \$1,077   \$0	\$76,500	\$402,500	\$479,000	109%	1974 & NA

[400 Hobron Lane 701](#) - MLS#: [202411868](#) - Rare unit in the most-desirable '01 corner stack' in the Villa on Eaton Square which offers 10% more space. This gem features an inviting open floor plan and three expansive panoramic windows that infuse the living area with natural light. Soak in the breathtaking views of the city, mountains and sunset from your own balcony. The many amenities include a pet-friendly policy, heated pool, sauna, BBQ area, gym and yoga room. The HOA fees include central AC, electricity, water, sewer, 24-hour security, storage and 1 parking space. Eaton Square is in the edge of Waikiki where you are moments away from Ala Moana Shopping Center, Ala Moana beach, world-class restaurants, Magic Island, Ala Wai Boat Harbor and more! Call your Realtor and Schedule your private showing today! **Region:** Metro **Neighborhood:** Waikiki **Condition:** Excellent **Parking:** Covered - 1, Secured Entry, Street, Unassigned **Total Parking:** 1 **View:** City, Ocean, Sunset **Frontage:** Other **Pool:** **Zoning:** X2 - Apartment Precinct **Sale Conditions:** None **Schools:** , , \*

[Request Showing](#), [Photos](#), [History](#), [Maps](#), [Deed](#), [Watch List](#), [Tax Info](#)

DOM = Days on Market, Occ. = Occupancy, FL = Floor Number