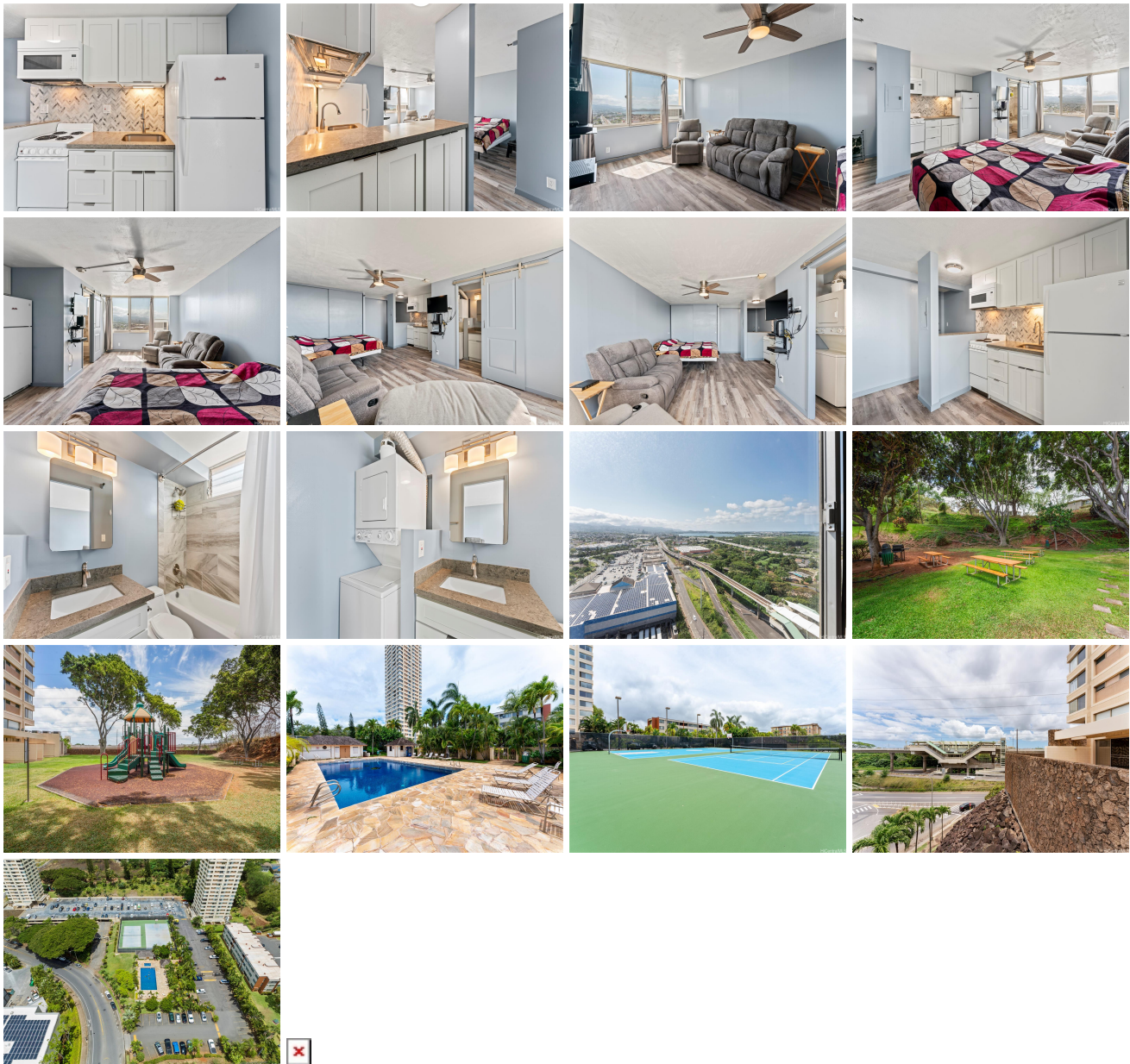


**Century Park Plaza 1060 Kamehameha Highway Unit 2305A, Pearl City 96782 \* \$275,000**

Beds: <b>0</b>	MLS#: <b>202411897, FS</b>	Year Built: <b>1984</b>
Bath: <b>1/0</b>	Status: <b>Active Under Contract</b>	Remodeled:
Living Sq. Ft.: <b>360</b>	List Date & DOM: <b>06-09-2024 &amp; 13</b>	Total Parking: <b>1</b>
Land Sq. Ft.: <b>214,620</b>	Condition: <b>Excellent</b>	<a href="#">Assessed Value</a>
Lanai Sq. Ft.: <b>0</b>	Frontage:	Building: <b>\$237,100</b>
Sq. Ft. Other: <b>0</b>	Tax/Year: <b>\$44/2023</b>	Land: <b>\$35,000</b>
Total Sq. Ft. <b>360</b>	Neighborhood: <b>Manana</b>	Total: <b>\$272,100</b>
Maint./Assoc. <b>\$387 / \$0</b>	<a href="#">Flood Zone</a> : <b>Zone X - Tool</b>	Stories / CPR: / <b>No</b>
Parking: <b>Assigned, Open - 1</b>	Frontage:	
<a href="#">Zoning</a> : <b>12 - A-2 Medium Density Apartme</b>	View: <b>Coastline, Diamond Head, Ocean</b>	

**Public Remarks:** Updated studio condo with in-unit washer/dryer at Century Park Plaza. Conveniently located near Sam's Club, 24-Hour Fitness, and the movie theaters. The unit is thoughtfully designed with ample storage and efficient use of space. The kitchen boasts recently updated appliances, modern cabinets, and quartz countertops. Luxury vinyl plank flooring throughout provides a cohesive feel. The washer/dryer combo is situated in the bathroom, which features a stylish vanity and an updated tub. The unit also comes with one assigned parking space. For easy commuting, bus stops and the rail station are located right across the road from the building. The building is well-maintained by an active management team. Recently resurfaced basketball and tennis courts, as well as a well-kept pool and whirlpool, are available year-round. **Sale Conditions:** None **Schools:** , , \* [Request Showing](#), [Photos](#), [History](#), [Maps](#), [Deed](#), [Watch List](#), [Tax Info](#)



Address	Price	Bd & Bth	Living / Avg.	Land   Avg.	DOM
---------	-------	----------	---------------	-------------	-----

<a href="#">1060 Kamehameha Highway 2305A</a>	<a href="#">\$275,000</a>	0 & 1/0	360   \$764	214,620   \$1	13
---	---------------------------	---------	-------------	---------------	----

Address	Tax   Maint.   Ass.	Assessed Land	Assessed Building	Assessed Total	Ratio	Year & Remodeled
<a href="#">1060 Kamehameha Highway 2305A</a>	\$44   \$387   \$0	\$35,000	\$237,100	\$272,100	101%	1984 & NA

[1060 Kamehameha Highway 2305A](#) - MLS#: [202411897](#) - Updated studio condo with in-unit washer/dryer at Century Park Plaza. Conveniently located near Sam's Club, 24-Hour Fitness, and the movie theaters. The unit is thoughtfully designed with ample storage and efficient use of space. The kitchen boasts recently updated appliances, modern cabinets, and quartz countertops. Luxury vinyl plank flooring throughout provides a cohesive feel. The washer/dryer combo is situated in the bathroom, which features a stylish vanity and an updated tub. The unit also comes with one assigned parking space. For easy commuting, bus stops and the rail station are located right across the road from the building. The building is well-maintained by an active management team. Recently resurfaced basketball and tennis courts, as well as a well-kept pool and whirlpool, are available year-round. **Region:** Pearl City **Neighborhood:** Manana **Condition:** Excellent **Parking:** Assigned, Open - 1 **Total Parking:** 1 **View:** Coastline, Diamond Head, Ocean **Frontage:** Pool: **Zoning:** 12 - A-2 Medium Density Apartme **Sale Conditions:** None **Schools:** , , \* [Request Showing](#), [Photos](#), [History](#), [Maps](#), [Deed](#), [Watch List](#), [Tax Info](#)

DOM = Days on Market