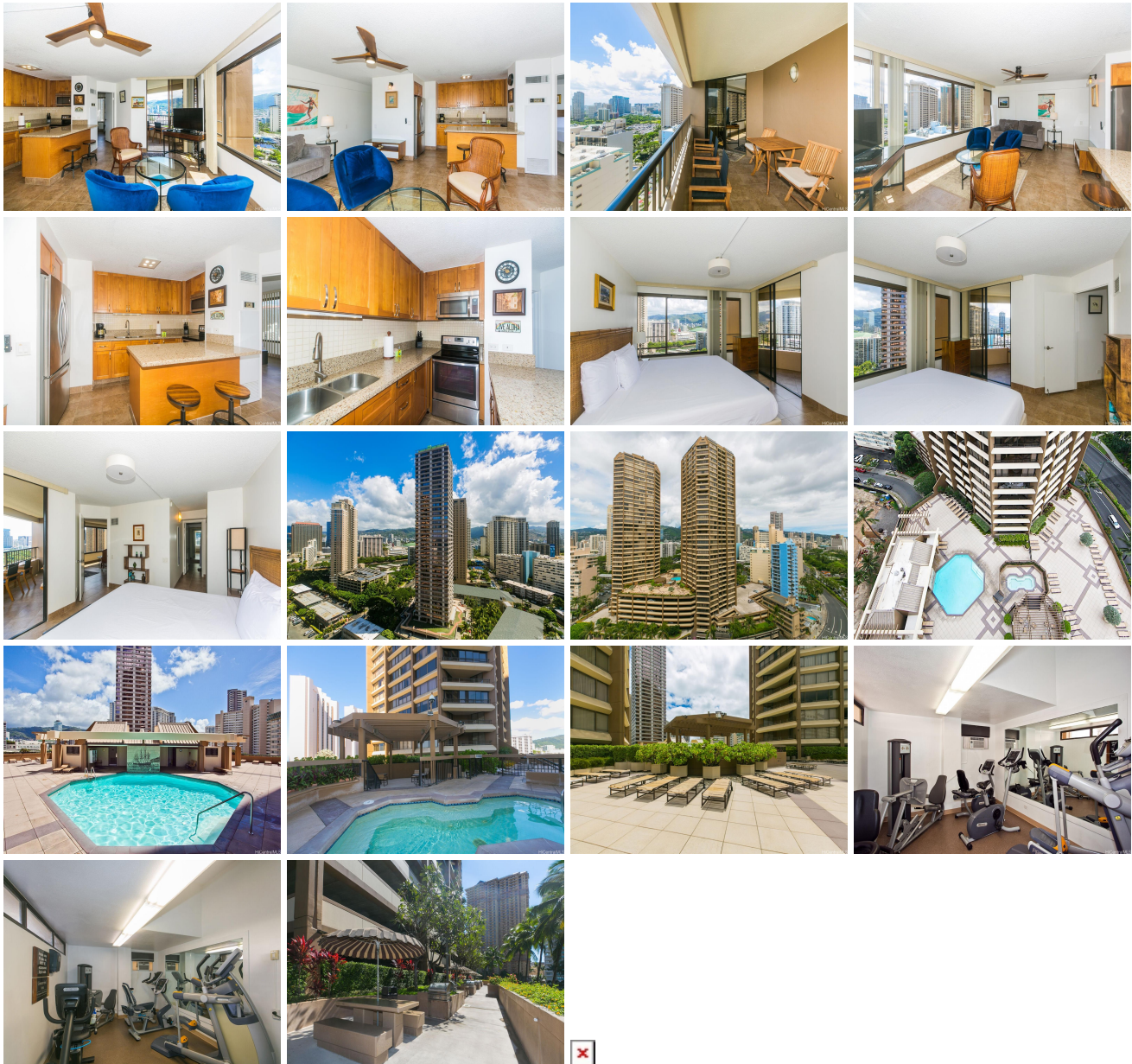


**Discovery Bay 1778 Ala Moana Boulevard Unit 2416, Honolulu 96815 \* \$380,000**

Beds: <b>1</b>	MLS#: <b>202411906, LH</b>	Year Built: <b>1977</b>
Bath: <b>1/0</b>	Status: <b>Active</b>	Remodeled: <b>2021</b>
Living Sq. Ft.: <b>724</b>	List Date & DOM: <b>06-07-2024 &amp; 21</b>	Total Parking: <b>1</b>
Land Sq. Ft.: <b>84,463</b>	Condition: <b>Excellent</b>	<a href="#">Assessed Value</a>
Lanai Sq. Ft.: <b>128</b>	Frontage: <b>Other</b>	Building: <b>\$607,600</b>
Sq. Ft. Other: <b>0</b>	Tax/Year: <b>\$180/2023</b>	Land: <b>\$14,600</b>
Total Sq. Ft. <b>852</b>	Neighborhood: <b>Waikiki</b>	Total: <b>\$622,200</b>
Maint./Assoc. <b>\$1,015 / \$0</b>	<a href="#">Flood Zone</a> : <b>Zone AE - Tool</b>	Stories / CPR: <b>21+ / No</b>
Parking: <b>Assigned, Covered - 1, Garage, Street</b>	Frontage: <b>Other</b>	
<a href="#">Zoning</a> : <b>X2 - Apartment Precinct</b>	View: <b>City, Diamond Head, Mountain, Sunrise</b>	

**Public Remarks:** Desirable Diamond Head view! Unit was significantly renovated in 2021! Fully furnished and move-in ready. Enjoy the spacious lanai in this beautiful larger size one bedroom/one bath unit. Amenities included: Pool, Sauna, Whirlpool, 8 BBQ stations with gas grills, 2 exercise rooms and a larger sun deck. Restaurants located on the ground floor of the building. Excellent location in Waikiki, close to Ala Moana Shopping Center, Ala Moana Beach Park, Hilton Hawaiian Village Hotel and the beautiful lagoon just minute away. Conveniently located along the bus line next to the Discovery Bay Building. Fee available to purchase at \$143,640 (97% Fee Interest) from Discovery Bay Condominium Association. Take advantage of this wonderful opportunity! **Sale Conditions:** None **Schools:** [Ala Wai](#), [Washington](#), [Mckinley](#) \* [Request Showing](#), [Photos](#), [History](#), [Maps](#), [Deed](#), [Watch List](#), [Tax Info](#)



Address	Price	Bd & Bth	Living / Avg.	Land   Avg.	DOM
<a href="#">1778 Ala Moana Boulevard 2416</a>	<b>\$380,000 LH</b>	1 & 1/0	724   \$525	84,463   \$4	21

Address	Tax   Maint.   Ass.	Assessed Land	Assessed Building	Assessed Total	Ratio	Year & Remodeled
<a href="#">1778 Ala Moana Boulevard 2416</a>	\$180   \$1,015   \$0	\$14,600	\$607,600	\$622,200	61%	1977 & 2021

[1778 Ala Moana Boulevard 2416](#) - MLS#: [202411906](#) - Desirable Diamond Head view! Unit was significantly renovated in 2021! Fully furnished and move-in ready. Enjoy the spacious lanai in this beautiful larger size one bedroom/one bath unit. Amenities included: Pool, Sauna, Whirlpool, 8 BBQ stations with gas grills, 2 exercise rooms and a larger sun deck. Restaurants located on the ground floor of the building. Excellent location in Waikiki, close to Ala Moana Shopping Center, Ala Moana Beach Park, Hilton Hawaiian Village Hotel and the beautiful lagoon just minute away. Conveniently located along the bus line next to the Discovery Bay Building. Fee available to purchase at \$143,640 (97% Fee Interest) from Discovery Bay Condominium Association. Take advantage of this wonderful opportunity! **Region:** Metro **Neighborhood:** Waikiki **Condition:** Excellent **Parking:** Assigned, Covered - 1, Garage, Street **Total Parking:** 1 **View:** City, Diamond Head, Mountain, Sunrise **Frontage:** Other **Pool:** Zoning: X2 - Apartment Precinct **Sale Conditions:** None **Schools:** [Ala Wai](#), [Washington](#), [Mckinley](#) \* [Request Showing](#), [Photos](#), [History](#), [Maps](#), [Deed](#), [Watch List](#), [Tax Info](#)

DOM = Days on Market