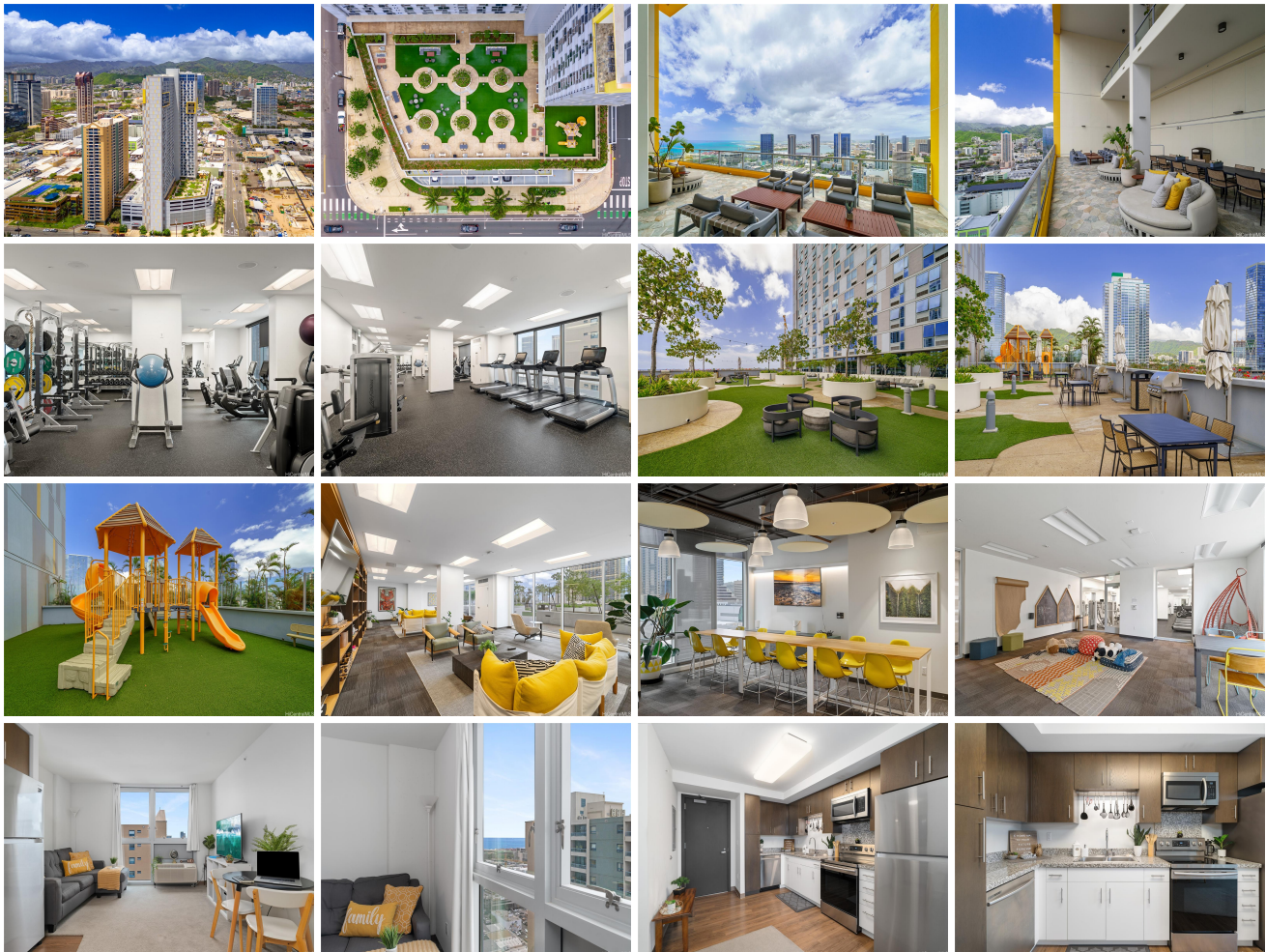


988 Halekauwila 988 Halekauwila Street Unit 2702, Honolulu 96814 * 988 Halekauwila *

\$569,000

Beds: 1	MLS#: 202411926, FS	Year Built: 2017
Bath: 1/0	Status: Active	Remodeled:
Living Sq. Ft.: 482	List Date & DOM: 05-24-2024 & 53	Total Parking: 1
Land Sq. Ft.: 0	Condition: Average	Assessed Value
Lanai Sq. Ft.: 0	Frontage: Other	Building: \$586,600
Sq. Ft. Other: 0	Tax/Year: \$142/2024	Land: \$20,400
Total Sq. Ft. 482	Neighborhood: Kakaako	Total: \$607,000
Maint./Assoc. \$580 / \$27	Flood Zone : Zone AE,Zo - Tool	Stories / CPR: 21+ / No
Parking: Assigned, Covered - 1, Garage, Guest, Secured Entry	Frontage: Other	
Zoning : Kak - Kakaako Community Development Project	View: City, Mountain, Ocean, Sunset	

Public Remarks: Live the life you love while enjoying countless amenities in this high-floor Ke Kilohana unit in desirable Ward Village, named "Best-Planned Community in the United States" by Architecture Digest. Amenities are highlighted by two signature sky lanai w/breathtaking ocean & mountain views. Other features include a movie theatre, music studio, modern fitness center, bike & surfboard storage, dog run, flex-work space, indoor & outdoor children's play areas, sky deck w/BBQ grills and multiple indoor and outdoor lounges, secured entry, covered parking, and so much more! In addition to the rare, highly-coveted large storage room right outside your door, this spacious, open floor plan 1-bedroom unit features ice-cold air conditioning, in-unit laundry, large bedroom w/walk-in closet, peek-a-boo ocean & mountain views, and luxe finishes, such as granite counters, stainless appliances, luxury vinyl plank, tile, & premium carpet floors, and designer cabinetry. Very close to Whole Foods, Ala Moana Center mall, University of Hawaii, boat harbors, beaches, surfing, shopping, dining, parks, entertainment, and everything else Ward Village has to offer. Truly urban Hawai'i living at it's finest! **Sale Conditions:** None
Schools: , , * [Request Showing](#), [Photos](#), [History](#), [Maps](#), [Deed](#), [Watch List](#), [Tax Info](#)





Address	Price	Bd & Bth	Living / Avg.	Land Avg.	Lanai	Occ.	FL	DOM
988 Halekauwila Street 2702	\$569,000	1 & 1/0	482 \$1,180	0 \$inf	0	80%	27	53

Address	Tax Maint. Ass.	Assessed Land	Assessed Building	Assessed Total	Ratio	Year & Remodeled
988 Halekauwila Street 2702	\$142 \$580 \$27	\$20,400	\$586,600	\$607,000	94%	2017 & NA

[988 Halekauwila Street 2702](#) - MLS#: [202411926](#) - Live the life you love while enjoying countless amenities in this high-floor Ke Kilohana unit in desirable Ward Village, named "Best-Planned Community in the United States" by Architecture Digest. Amenities are highlighted by two signature sky lanai w/breathtaking ocean & mountain views. Other features include a movie theatre, music studio, modern fitness center, bike & surfboard storage, dog run, flex-work space, indoor & outdoor children's play areas, sky deck w/BBQ grills and multiple indoor and outdoor lounges, secured entry, covered parking, and so much more! In addition to the rare, highly-coveted large storage room right outside your door, this spacious, open floor plan 1-bedroom unit features ice-cold air conditioning, in-unit laundry, large bedroom w/walk-in closet, peek-a-boo ocean & mountain views, and luxe finishes, such as granite counters, stainless appliances, luxury vinyl plank, tile, & premium carpet floors, and designer cabinetry. Very close to Whole Foods, Ala Moana Center mall, University of Hawaii, boat harbors, beaches, surfing, shopping, dining, parks, entertainment, and everything else Ward Village has to offer. Truly urban Hawai'i living at it's finest! **Region:** Metro **Neighborhood:** Kakaako **Condition:** Average **Parking:** Assigned, Covered - 1, Garage, Guest, Secured Entry **Total Parking:** 1 **View:** City, Mountain, Ocean, Sunset **Frontage:** Other **Pool:** **Zoning:** Kak - Kakaako Community Development Project **Sale Conditions:** None **Schools:** , , * [Request Showing](#), [Photos](#), [History](#), [Maps](#), [Deed](#), [Watch List](#), [Tax Info](#)

DOM = Days on Market, Occ. = Occupancy, FL = Floor Number