

Allure Waikiki 1837 Kalakaua Avenue Unit 2702, Honolulu 96815 * Allure Waikiki *

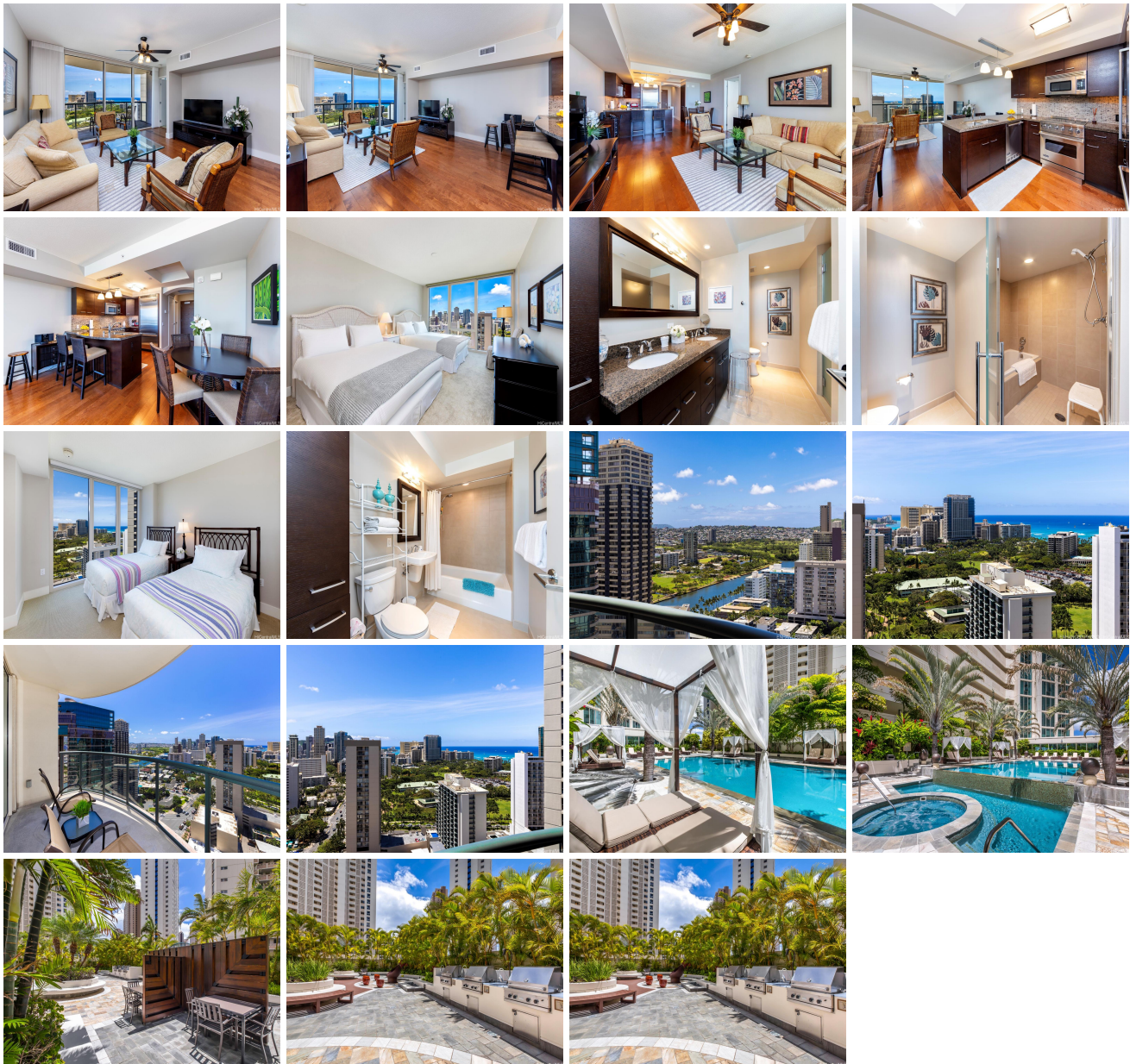
\$1,199,500 * Originally \$1,288,000

Beds: 2	MLS#: 202411950, FS	Year Built: 2009
Bath: 2/0	Status: Active	Remodeled:
Living Sq. Ft.: 1,057	List Date & DOM: 05-25-2024 & 36	Total Parking: 1
Land Sq. Ft.: 0	Condition: Excellent	Assessed Value
Lanai Sq. Ft.: 88	Frontage:	Building: \$1,041,700
Sq. Ft. Other: 0	Tax/Year: \$404/2023	Land: \$32,600
Total Sq. Ft. 1,145	Neighborhood: Waikiki	Total: \$1,074,300
Maint./Assoc. \$1,132 / \$0	Flood Zone : Zone AO - Tool	Stories / CPR: 21+ / No
Parking: Assigned, Covered - 1, Guest, Secured Entry	Frontage:	

Zoning: X6 - Resort Mixed Use Precinct

View: **City, Diamond Head, Golf Course, Ocean, Sunrise**

Public Remarks: Allure Waikiki stands as one of Waikiki's most established luxury condominium residences. With its modern design & resort-style amenities, this icon in Honolulu is one you don't want to miss. This 27th-floor unit features a spacious 2 bedroom, 2 bath floor plan, facing east with stunning views of the Pacific Ocean, DeRussy Park, Ala Wai Canal, Waikiki, & partial Diamond Head vistas from the primary living area & both bedroom suites. The primary bedroom offers a true resort experience, including a large walk-in closet, ensuite bathroom with double vanity & separate shower room with a deep soaking tub. This property has been upgraded with Hunter-Douglas shades/curtains throughout. This superb location at the entrance of Waikiki puts dining, shopping, entertainment, beaches, & water sports within blocks. Listing includes enhanced, zoomed-in photos. **Sale Conditions:** None **Schools:** , , * [Request Showing, Photos, History, Maps, Deed, Watch List, Tax Info](#)



Address	Price	Bd & Bth	Living / Avg.	Land Avg.	Lanai	Occ.	FL	DOM
1837 Kalakaua Avenue 2702	\$1,199,500	2 & 2/0	1,057 \$1,135	0 \$inf	88	43%	27	36

Address	Tax Maint. Ass.	Assessed Land	Assessed Building	Assessed Total	Ratio	Year & Remodeled
1837 Kalakaua Avenue 2702	\$404 \$1,132 \$0	\$32,600	\$1,041,700	\$1,074,300	112%	2009 & NA

[1837 Kalakaua Avenue 2702](#) - MLS#: [202411950](#) - Original price was \$1,288,000 - Allure Waikiki stands as one of Waikiki's most established luxury condominium residences. With its modern design & resort-style amenities, this icon in Honolulu is one you don't want to miss. This 27th-floor unit features a spacious 2 bedroom, 2 bath floor plan, facing east with stunning views of the Pacific Ocean, DeRussy Park, Ala Wai Canal, Waikiki, & partial Diamond Head vistas from the primary living area & both bedroom suites. The primary bedroom offers a true resort experience, including a large walk-in closet, ensuite bathroom with double vanity & separate shower room with a deep soaking tub. This property has been upgraded with Hunter-Douglas shades/curtains throughout. This superb location at the entrance of Waikiki puts dining, shopping, entertainment, beaches, & water sports within blocks. Listing includes enhanced, zoomed-in photos. **Region:** Metro **Neighborhood:** Waikiki **Condition:** Excellent **Parking:** Assigned, Covered - 1, Guest, Secured Entry **Total Parking:** 1 **View:** City, Diamond Head, Golf Course, Ocean, Sunrise **Frontage:** **Pool:** **Zoning:** X6 - Resort Mixed Use Precinct **Sale Conditions:** None **Schools:** , , * [Request Showing](#), [Photos](#), [History](#), [Maps](#), [Deed](#), [Watch List](#), [Tax Info](#)

DOM = Days on Market, Occ. = Occupancy, FL = Floor Number