

2029 Kuola Place, Honolulu 96821 * * \$3,295,000

Beds: 4
Bath: 3/1
Living Sq. Ft.: 3,835
Land Sq. Ft.: 8,533
Lanai Sq. Ft.: 249
Sq. Ft. Other: 0
Total Sq. Ft. 4,084
Maint./Assoc. \$0 / \$350

MLS#: [202411966](#), FS
Status: **Active**
List Date & DOM: **06-03-2024 & 25**
Condition: **Excellent**
Frontage:
Tax/Year: **\$1,355/2023**
Neighborhood: **Waialae Iki**
[Flood Zone](#): **Zone X - Tool**

Year Built: **1989**
Remodeled: **2023**
Total Parking: **2**
[Assessed Value](#)
Building: **\$641,300**
Land: **\$1,341,400**
Total: **\$1,982,700**
Stories / CPR: **Two / No**

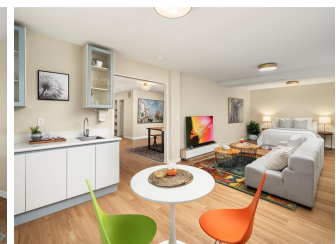
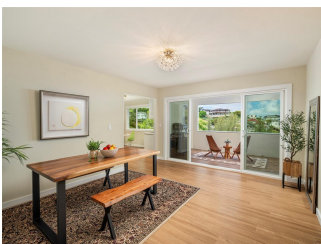
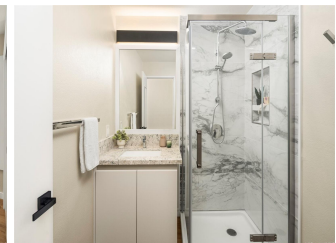
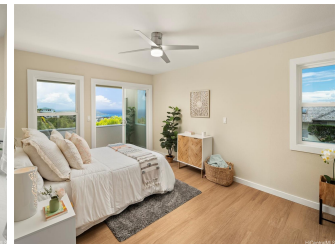
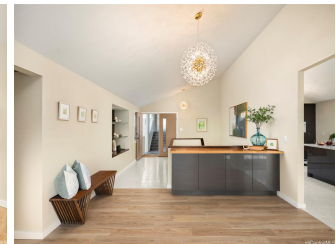
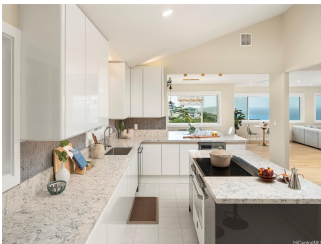
Parking: **2 Car, Driveway, Garage, Street**

Frontage:

[Zoning](#): **04 - R-7.5 Residential District**

View: **Garden, Mountain, Ocean**

Public Remarks: Find Your Piece of Paradise... Privately situated on a cul de sac location in gated Waialae Iki V, this 4-BD HM is full of sparkle & ready for you to move in & start living! Enjoy stunning ocean, coastline, Koko Head & Mountain views from the moment you arrive. A wide-open sprawling floor plan provides fabulous living & entertainment spaces that seamlessly connect to the adjacent dining alcove. The kitchen offers striking light & bright color tones, professional appliances, a central island, spacious wrap around counters plus a pass-through service counter ideal for your holiday buffets. The Primary Suite w/ modern touches & dramatic light fixtures enjoys gorgeous views & a lovely bath w/ soaking tub, walk in shower & dual vanities. Three add'l bedroom suites offer picturesque views & are located on the lower level along w/ a secondary lounge area. An adjoining covered lanai offers cool breezes & is the perfect place to relax after a long day. A sizable outdoor deck overlooks the lower lawn w/ numerous areas for the gardening enthusiast. This beautiful home complete w/ 13 owned PV panels, shows true pride of ownership & is ready for you to start living your best life ever! **Sale Conditions:** None **Schools:** [Aina Haina](#), [Niu Valley](#), [Kalani](#) * [Request Showing](#), [Photos](#), [History](#), [Maps](#), [Deed](#), [Watch List](#), [Tax Info](#)





Address	Price	Bd & Bth	Living / Avg.	Land Avg.	Lanai	Occ.	FL	DOM
2029 Kuola Place	\$3,295,000	4 & 3/1	3,835 \$859	8,533 \$386	249	0%	0	25

Address	Tax Maint. Ass.	Assessed Land	Assessed Building	Assessed Total	Ratio	Year & Remodeled
2029 Kuola Place	\$1,355 \$0 \$350	\$1,341,400	\$641,300	\$1,982,700	166%	1989 & 2023

[2029 Kuola Place](#) - MLS#: [202411966](#) - Find Your Piece of Paradise... Privately situated on a cul de sac location in gated Waialae Iki V, this 4-BD HM is full of sparkle & ready for you to move in & start living! Enjoy stunning ocean, coastline, Koko Head & Mountain views from the moment you arrive. A wide-open sprawling floor plan provides fabulous living & entertainment spaces that seamlessly connect to the adjacent dining alcove. The kitchen offers striking light & bright color tones, professional appliances, a central island, spacious wrap around counters plus a pass-through service counter ideal for your holiday buffets. The Primary Suite w/ modern touches & dramatic light fixtures enjoys gorgeous views & a lovely bath w/ soaking tub, walk in shower & dual vanities. Three add'l bedroom suites offer picturesque views & are located on the lower level along w/ a secondary lounge area. An adjoining covered lanai offers cool breezes & is the perfect place to relax after a long day. A sizable outdoor deck overlooks the lower lawn w/ numerous areas for the gardening enthusiast. This beautiful home complete w/ 13 owned PV panels, shows true pride of ownership & is ready for you to start living your best life ever!

Region: Diamond Head **Neighborhood:** Waialae Iki **Condition:** Excellent **Parking:** 2 Car, Driveway, Garage, Street **Total Parking:** 2 **View:** Garden, Mountain, Ocean **Frontage:** **Pool:** None **Zoning:** 04 - R-7.5 Residential District **Sale Conditions:** None **Schools:** [Aina Haina](#), [Niu Valley](#), [Kalani](#) * [Request Showing](#), [Photos](#), [History](#), [Maps](#), [Deed](#), [Watch List](#), [Tax Info](#)

DOM = Days on Market, Occ. = Occupancy, FL = Floor Number