

## **2029 Kuola Place, Honolulu 96821 \* \$3,295,000**

Beds: **4**  
Bath: **3/1**  
Living Sq. Ft.: **3,835**  
Land Sq. Ft.: **8,533**  
Lanai Sq. Ft.: **249**  
Sq. Ft. Other: **0**  
Total Sq. Ft. **4,084**  
Maint./Assoc. **\$0 / \$350**

MLS#: **202411966, FS**  
Status: **Active**  
List Date & DOM: **06-03-2024 & 40**  
Condition: **Excellent**  
Frontage:  
Tax/Year: **\$1,355/2023**  
Neighborhood: **Waialae Iki**  
[Flood Zone](#): **Zone X - Tool**

Year Built: **1989**  
Remodeled: **2023**  
Total Parking: **2**  
[Assessed Value](#)  
Building: **\$641,300**  
Land: **\$1,341,400**  
Total: **\$1,982,700**  
Stories / CPR: **Two / No**

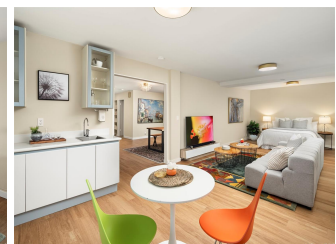
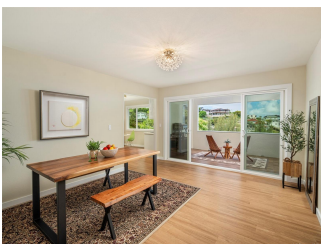
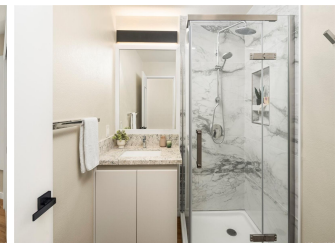
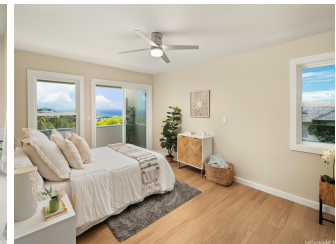
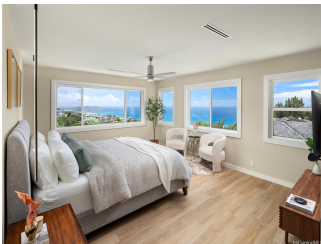
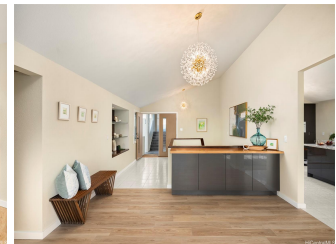
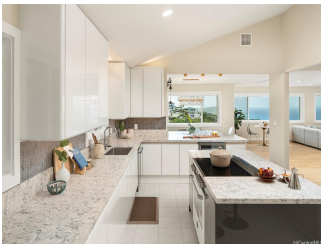
Parking: **2 Car, Driveway, Garage, Street**

Frontage:

[Zoning](#): **04 - R-7.5 Residential District**

View: **Garden, Mountain, Ocean**

**Public Remarks:** Find Your Piece of Paradise... Privately situated on a cul de sac location in gated Waialae Iki V, this 4-BD HM is full of sparkle & ready for you to move in & start living! Enjoy stunning ocean, coastline, Koko Head & Mountain views from the moment you arrive. A wide-open sprawling floor plan provides fabulous living & entertainment spaces that seamlessly connect to the adjacent dining alcove. The kitchen offers striking light & bright color tones, professional appliances, a central island, spacious wrap around counters plus a pass-through service counter ideal for your holiday buffets. The Primary Suite w/ modern touches & dramatic light fixtures enjoys gorgeous views & a lovely bath w/ soaking tub, walk in shower & dual vanities. Three add'l bedroom suites offer picturesque views & are located on the lower level along w/ a secondary lounge area. An adjoining covered lanai offers cool breezes & is the perfect place to relax after a long day. A sizable outdoor deck overlooks the lower lawn w/ numerous areas for the gardening enthusiast. This beautiful home complete w/ 13 owned PV panels, shows true pride of ownership & is ready for you to start living your best life ever! **Sale Conditions:** None **Schools:** [Aina Haina](#), [Niu Valley](#), [Kalani](#) \* [Request Showing](#), [Photos](#), [History](#), [Maps](#), [Deed](#), [Watch List](#), [Tax Info](#)





Address	Price	Bd & Bth	Living / Avg.	Land   Avg.	DOM
<a href="#">2029 Kuola Place</a>	<a href="#">\$3,295,000</a>	4 & 3/1	3,835   \$859	8,533   \$386	40

Address	Tax   Maint.   Ass.	Assessed Land	Assessed Building	Assessed Total	Ratio	Year & Remodeled
<a href="#">2029 Kuola Place</a>	\$1,355   \$0   \$350	\$1,341,400	\$641,300	\$1,982,700	166%	1989 & 2023

[2029 Kuola Place](#) - MLS#: [202411966](#) - Find Your Piece of Paradise... Privately situated on a cul de sac location in gated Waialae Iki V, this 4-BD HM is full of sparkle & ready for you to move in & start living! Enjoy stunning ocean, coastline, Koko Head & Mountain views from the moment you arrive. A wide-open sprawling floor plan provides fabulous living & entertainment spaces that seamlessly connect to the adjacent dining alcove. The kitchen offers striking light & bright color tones, professional appliances, a central island, spacious wrap around counters plus a pass-through service counter ideal for your holiday buffets. The Primary Suite w/ modern touches & dramatic light fixtures enjoys gorgeous views & a lovely bath w/ soaking tub, walk in shower & dual vanities. Three add'l bedroom suites offer picturesque views & are located on the lower level along w/ a secondary lounge area. An adjoining covered lanai offers cool breezes & is the perfect place to relax after a long day. A sizable outdoor deck overlooks the lower lawn w/ numerous areas for the gardening enthusiast. This beautiful home complete w/ 13 owned PV panels, shows true pride of ownership & is ready for you to start living your best life ever!

**Region:** Diamond Head **Neighborhood:** Waialae Iki **Condition:** Excellent **Parking:** 2 Car, Driveway, Garage, Street **Total Parking:** 2 **View:** Garden, Mountain, Ocean **Frontage:** Pool: None **Zoning:** 04 - R-7.5 Residential District **Sale Conditions:** None **Schools:** [Aina Haina](#), [Niu Valley](#), [Kalani](#) \* [Request Showing](#), [Photos](#), [History](#), [Maps](#), [Deed](#), [Watch List](#), [Tax Info](#)

DOM = Days on Market