

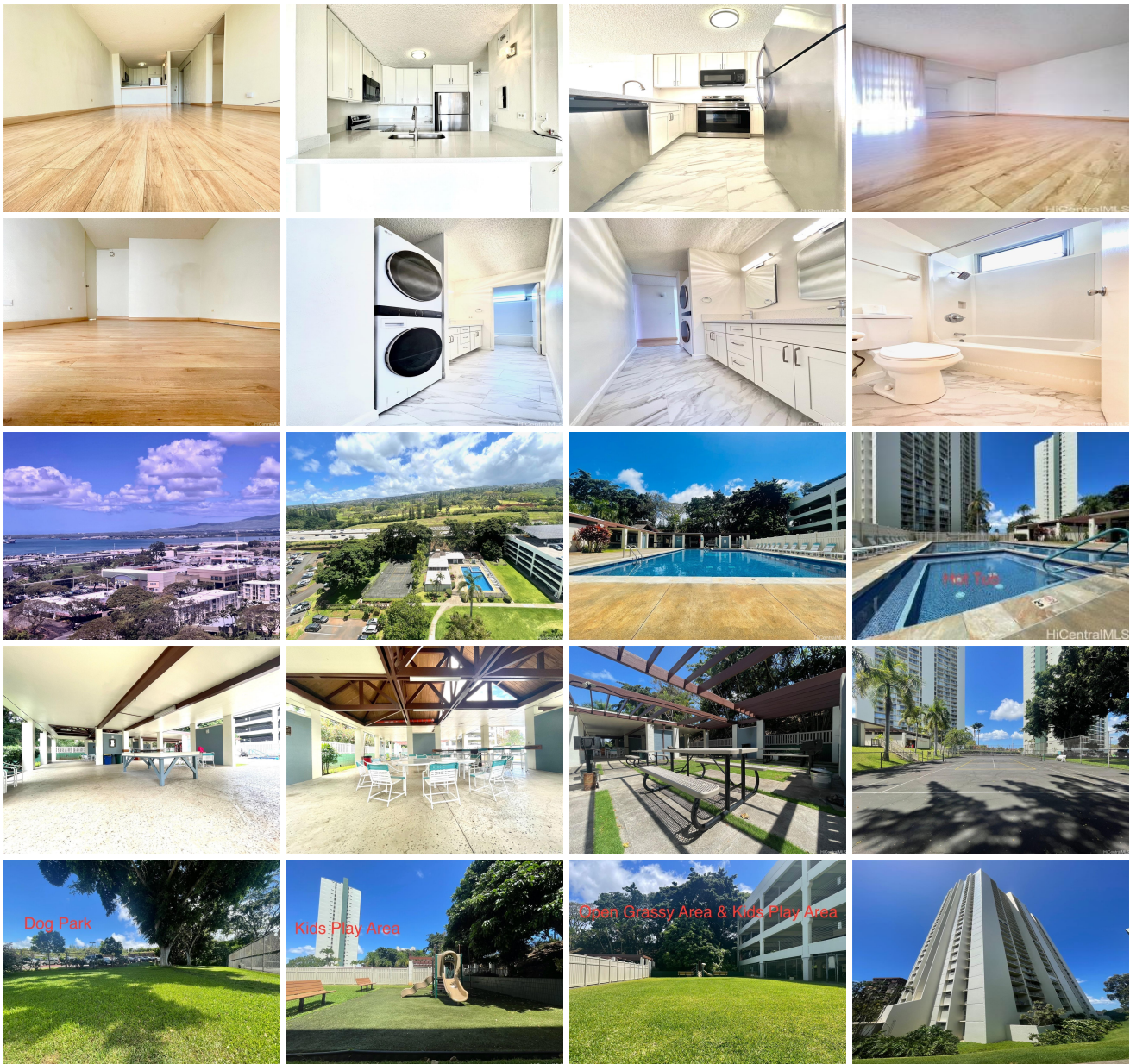
Pearl 2 98-410 Koauka Loop Unit 15A, Aiea 96701 * \$495,000

Beds: 2	MLS#: 202411985, FS	Year Built: 1975
Bath: 1/0	Status: Active	Remodeled: 2021
Living Sq. Ft.: 838	List Date & DOM: 05-26-2024 & 52	Total Parking: 2
Land Sq. Ft.: 0	Condition: Excellent	Assessed Value
Lanai Sq. Ft.: 68	Frontage:	Building: \$404,200
Sq. Ft. Other: 0	Tax/Year: \$112/2023	Land: \$80,400
Total Sq. Ft. 906	Neighborhood: Pearlridge	Total: \$484,600
Maint./Assoc. \$765 / \$0	Flood Zone : Zone X - Tool	Stories / CPR: 21+ / No
Parking: Assigned, Covered - 1, Open - 1	Frontage:	

Zoning: 12 - A-2 Medium Density Apartme

View: **City, Coastline, Golf Course, Ocean, Sunrise, Sunset**

Public Remarks: Pearl 2 - Beautiful 2 bedrooms, 1 bath unit with 2 assigned parking stalls. This corner end unit has both golf course and harbor views. Located close to Pearlridge Shopping Mall, Restaurants, Entertainment, Movie Theaters, Schools, Hospitals, Airport, Pearl/Hickam and is on the Bus Route. Building has many amenities to enjoy including Recreation Area, BBQ, Dog Park, Tennis Court, Pool, Hot Tub, and Kids Play Area. **Sale Conditions:** None **Schools:** , , * [Request Showing](#), [Photos](#), [History](#), [Maps](#), [Deed](#), [Watch List](#), [Tax Info](#)





Address	Price	Bd & Bth	Living / Avg.	Land Avg.	DOM
98-410 Koauka Loop 15A	\$495,000	2 & 1/0	838 \$591	0 \$inf	52

Address	Tax Maint. Ass.	Assessed Land	Assessed Building	Assessed Total	Ratio	Year & Remodeled
98-410 Koauka Loop 15A	\$112 \$765 \$0	\$80,400	\$404,200	\$484,600	102%	1975 & 2021

[98-410 Koauka Loop 15A](#) - MLS#: [202411985](#) - Pearl 2 - Beautiful 2 bedrooms, 1 bath unit with 2 assigned parking stalls. This corner end unit has both golf course and harbor views. Located close to Pearlridge Shopping Mall, Restaurants, Entertainment, Movie Theaters, Schools, Hospitals, Airport, Pearl/Hickam and is on the Bus Route. Building has many amenities to enjoy including Recreation Area, BBQ, Dog Park, Tennis Court, Pool, Hot Tub, and Kids Play Area. **Region:** Pearl City **Neighborhood:** Pearlridge **Condition:** Excellent **Parking:** Assigned, Covered - 1, Open - 1 **Total Parking:** 2 **View:** City, Coastline, Golf Course, Ocean, Sunrise, Sunset **Frontage:** **Pool:** **Zoning:** 12 - A-2 Medium Density Apartme **Sale Conditions:** None **Schools:** , , * [Request Showing](#), [Photos](#), [History](#), [Maps](#), [Deed](#), [Watch List](#), [Tax Info](#)

DOM = Days on Market