

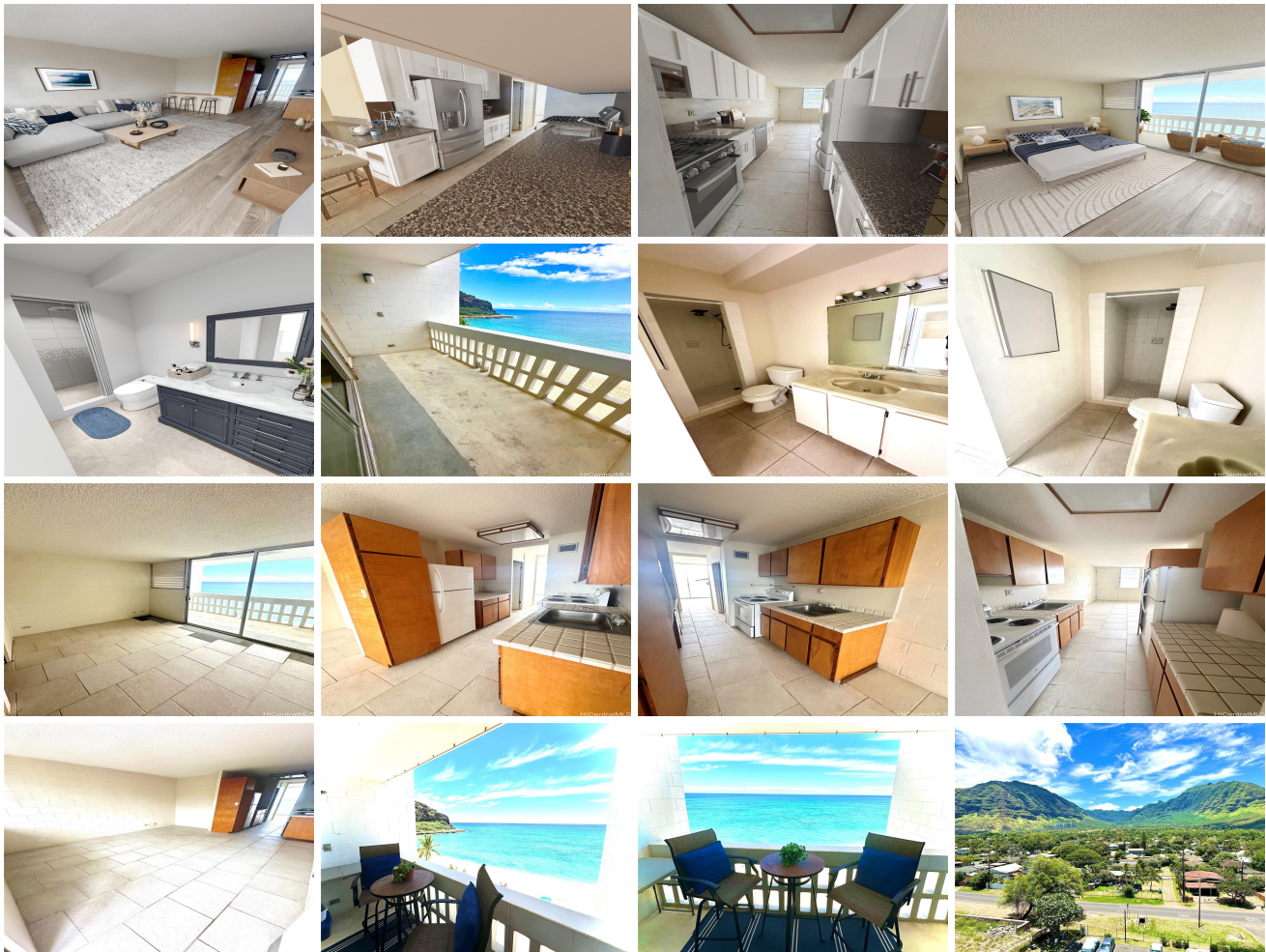
Makaha Beach Cabanas 84-965 Farrington Highway Unit A705, Waianae 96792 * Makaha Beach Cabanas * \$249,000 * Originally \$310,000

Beds: 1	MLS#: 202411987, FS	Year Built: 1967
Bath: 1/0	Status: Active	Remodeled: 2015
Living Sq. Ft.: 456	List Date & DOM: 05-27-2024 & 30	Total Parking: 1
Land Sq. Ft.: 97,749	Condition: Above Average, Average	Assessed Value
Lanai Sq. Ft.: 64	Frontage: Ocean, Sandy Beach, Waterfront	Building: \$348,900
Sq. Ft. Other: 0	Tax/Year: \$98/2023	Land: \$7,700
Total Sq. Ft. 520	Neighborhood: Makaha	Total: \$356,600
Maint./Assoc. \$993 / \$0	Flood Zone : Zone AE - Tool	Stories / CPR: One / No
Parking: Guest, Open - 1, Secured Entry, Unassigned	Frontage: Ocean, Sandy Beach, Waterfront	

Zoning: 12 - A-2 Medium Density Apartme

View: City, Coastline, Mountain, Ocean, Sunrise, Sunset

Public Remarks: HUGE PRICE REDUCTION! \$50k+ lower than market value! Contractors special! Bring your offers now! Indulge in the mesmerizing panorama of breath taking ocean views from your 7th-floor sanctuary, nestled in this sandy beachfront condo, located on one of Oahu's most beautiful sandy and swimmable beaches. Awaken your senses with the symphony of waves serenading your morning coffee, while gentle sea turtles grace your view with their tranquil presence. Embrace a lifestyle of adventure, beauty and relaxation on the Leeward side of Oahu, enjoy the lush greenery of hiking and world-class golf courses, plunge into turquoise waters right outside your door for a refreshing swim, reel in the catch of the day or enjoy the whales and dolphins as they dance by. This unit is in great condition, but beckons for your personal touch to transform it into your own slice of paradise. Pictures are virtually renovated and staged. Seize the opportunity to claim your stake in this idyllic retreat in a gated community, with 1 deeded parking and plenty of guest parking! Don't miss this rare opportunity! **Sale Conditions:** None **Schools:** [Waianae](#), , [Waianae](#) * [Request Showing](#), [Photos](#), [History](#), [Maps](#), [Deed](#), [Watch List](#), [Tax Info](#)





Address	Price	Bd & Bth	Living / Avg.	Land Avg.	Lanai	Occ.	FL	DOM
84-965 Farrington Highway A705	\$249,000	1 & 1/0	456 \$546	97,749 \$3	64	23%	7	30

Address	Tax Maint. Ass.	Assessed Land	Assessed Building	Assessed Total	Ratio	Year & Remodeled
84-965 Farrington Highway A705	\$98 \$993 \$0	\$7,700	\$348,900	\$356,600	70%	1967 & 2015

[84-965 Farrington Highway A705](#) - MLS#: [202411987](#) - Original price was \$310,000 - HUGE PRICE REDUCTION! \$50k+ lower than market value! Contractors special! Bring your offers now! Indulge in the mesmerizing panorama of breath taking ocean views from your 7th-floor sanctuary, nestled in this sandy beachfront condo, located on one of Oahu's most beautiful sandy and swimmable beaches. Awaken your senses with the symphony of waves serenading your morning coffee, while gentle sea turtles grace your view with their tranquil presence. Embrace a lifestyle of adventure, beauty and relaxation on the Leeward side of Oahu, enjoy the lush greenery of hiking and world-class golf courses, plunge into turquoise waters right outside your door for a refreshing swim, reel in the catch of the day or enjoy the whales and dolphins as they dance by. This unit is in great condition, but beckons for your personal touch to transform it into your own slice of paradise. Pictures are virtually renovated and staged. Seize the opportunity to claim your stake in this idyllic retreat in a gated community, with 1 deeded parking and plenty of guest parking! Don't miss this rare opportunity! **Region:** Leeward **Neighborhood:** Makaha **Condition:** Above Average, Average **Parking:** Guest, Open - 1, Secured Entry, Unassigned **Total Parking:** 1 **View:** City, Coastline, Mountain, Ocean, Sunrise, Sunset **Frontage:** Ocean, Sandy Beach, Waterfront **Pool:** **Zoning:** 12 - A-2 Medium Density Apartme **Sale Conditions:** None **Schools:** [Waianae](#), , [Waianae](#) * [Request Showing](#), [Photos](#), [History](#), [Maps](#), [Deed](#), [Watch List](#), [Tax Info](#)

DOM = Days on Market, Occ. = Occupancy, FL = Floor Number