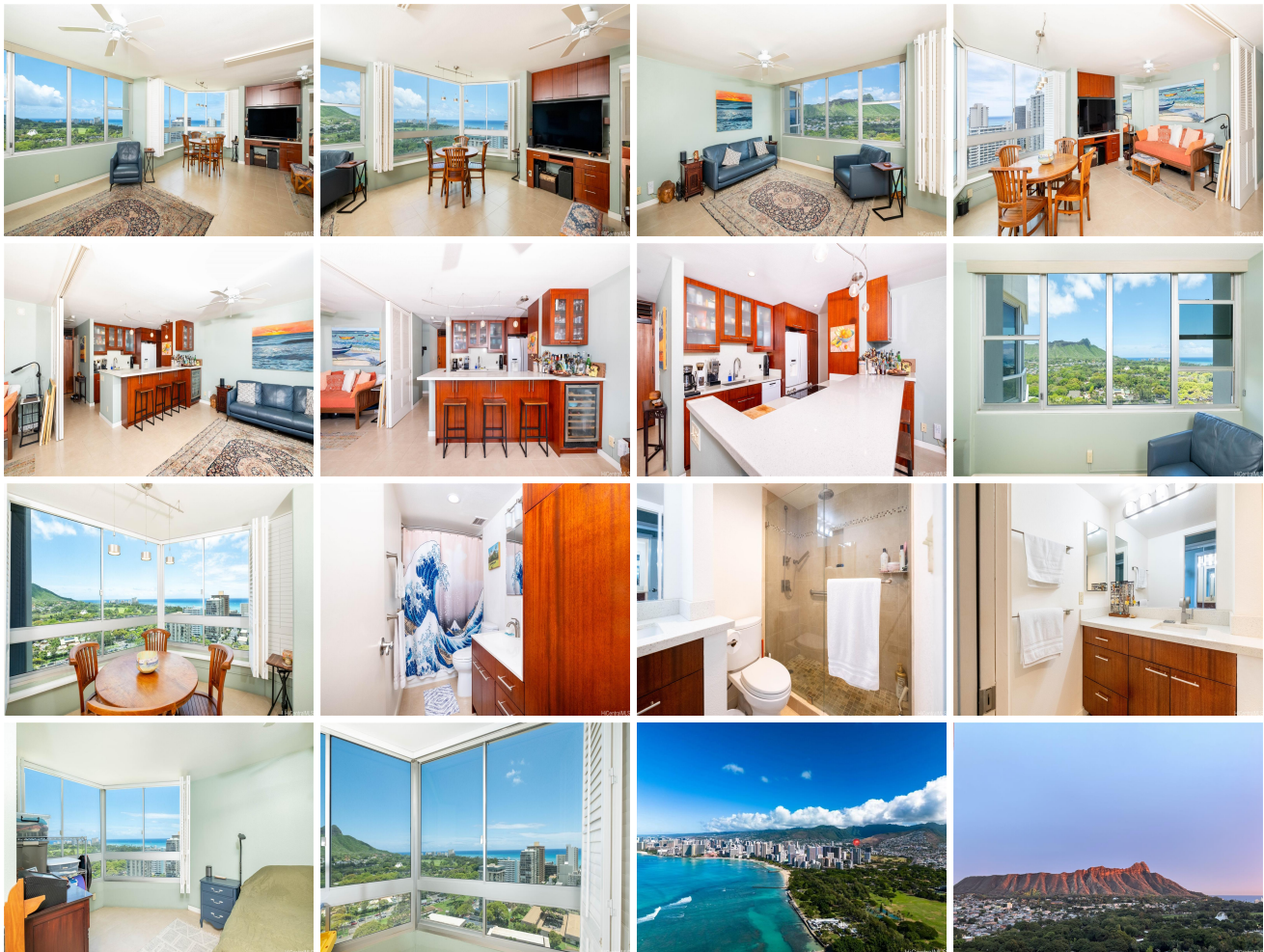


Diamond Head Vista 2600 Pualani Way Unit 2102, Honolulu 96815 * \$1,065,000 *

Originally \$1,125,000

Beds: 2	MLS#: 202412182, FS	Year Built: 1975
Bath: 2/0	Status: Active	Remodeled: 2011
Living Sq. Ft.: 1,058	List Date & DOM: 05-30-2024 & 28	Total Parking: 1
Land Sq. Ft.: 28,967	Condition: Excellent	Assessed Value
Lanai Sq. Ft.: 0	Frontage:	Building: \$761,300
Sq. Ft. Other: 0	Tax/Year: \$265/2023	Land: \$145,900
Total Sq. Ft. 1,058	Neighborhood: Waikiki	Total: \$907,200
Maint./Assoc. \$1,102 / \$0	Flood Zone : Zone X - Tool	Stories / CPR: / No
Parking: Covered - 1, Guest, Secured Entry	Frontage:	
Zoning : X2 - Apartment Precinct	View: City, Coastline, Diamond Head, Mountain, Ocean, Sunrise, Sunset	

Public Remarks: Welcome to your Waikiki Oasis at an attractive NEW PRICE! Highly sought-after 2 bedroom 2 bath unit in Diamond Head Vista! Step into this exceptional high-floor 02 stack unit and be captivated by the awe-inspiring unobstructed panoramic views of Diamond Head, the sparkling ocean and the iconic Waikiki skyline. Currently configured with sliding louvered doors designed to maximize the breathtaking scenery, open-concept living, dining, and kitchen area. The property seamlessly flows, creating a spacious and inviting atmosphere. Imagine waking up to the sunrise over Diamond Head, enjoying meals with stunning ocean vistas or unwinding in the living room while watching the sunset paint the sky. Remodeled with high-end finishes and modern touches, the unit boasts both luxury and comfort. The prime location puts you in the heart of Waikiki's vibrant energy. Stroll to the nearby beach, immerse yourself in the lush greenery of Kapiolani Park, or explore the endless array of restaurants, shops and nightlife options just steps from your door. Whether you seek a residence, a vacation home or an investment property, this property offers the best of Waikiki living in a truly exceptional setting. **Sale Conditions:** None **Schools:** , , * [Request Showing](#), [Photos](#), [History](#), [Maps](#), [Deed](#), [Watch List](#), [Tax Info](#)





Address	Price	Bd & Bth	Living / Avg.	Land Avg.	DOM
2600 Pualani Way 2102	\$1,065,000	2 & 2/0	1,058 \$1,007	28,967 \$37	28

Address	Tax Maint. Ass.	Assessed Land	Assessed Building	Assessed Total	Ratio	Year & Remodeled
2600 Pualani Way 2102	\$265 \$1,102 \$0	\$145,900	\$761,300	\$907,200	117%	1975 & 2011

[2600 Pualani Way 2102](#) - MLS#: [202412182](#) - Original price was \$1,125,000 - Welcome to your Waikiki Oasis at an attractive NEW PRICE! Highly sought-after 2 bedroom 2 bath unit in Diamond Head Vista! Step into this exceptional high-floor 02 stack unit and be captivated by the awe-inspiring unobstructed panoramic views of Diamond Head, the sparkling ocean and the iconic Waikiki skyline. Currently configured with sliding louvered doors designed to maximize the breathtaking scenery, open-concept living, dining, and kitchen area. The property seamlessly flows, creating a spacious and inviting atmosphere. Imagine waking up to the sunrise over Diamond Head, enjoying meals with stunning ocean vistas or unwinding in the living room while watching the sunset paint the sky. Remodeled with high-end finishes and modern touches, the unit boasts both luxury and comfort. The prime location puts you in the heart of Waikiki's vibrant energy. Stroll to the nearby beach, immerse yourself in the lush greenery of Kapiolani Park, or explore the endless array of restaurants, shops and nightlife options just steps from your door. Whether you seek a residence, a vacation home or an investment property, this property offers the best of Waikiki living in a truly exceptional setting. **Region:** Metro **Neighborhood:** Waikiki **Condition:** Excellent **Parking:** Covered - 1, Guest, Secured Entry **Total Parking:** 1 **View:** City, Coastline, Diamond Head, Mountain, Ocean, Sunrise, Sunset **Frontage:** **Pool:** **Zoning:** X2 - Apartment Precinct **Sale Conditions:** None **Schools:** , , * [Request Showing](#), [Photos](#), [History](#), [Maps](#), [Deed](#), [Watch List](#), [Tax Info](#)

DOM = Days on Market