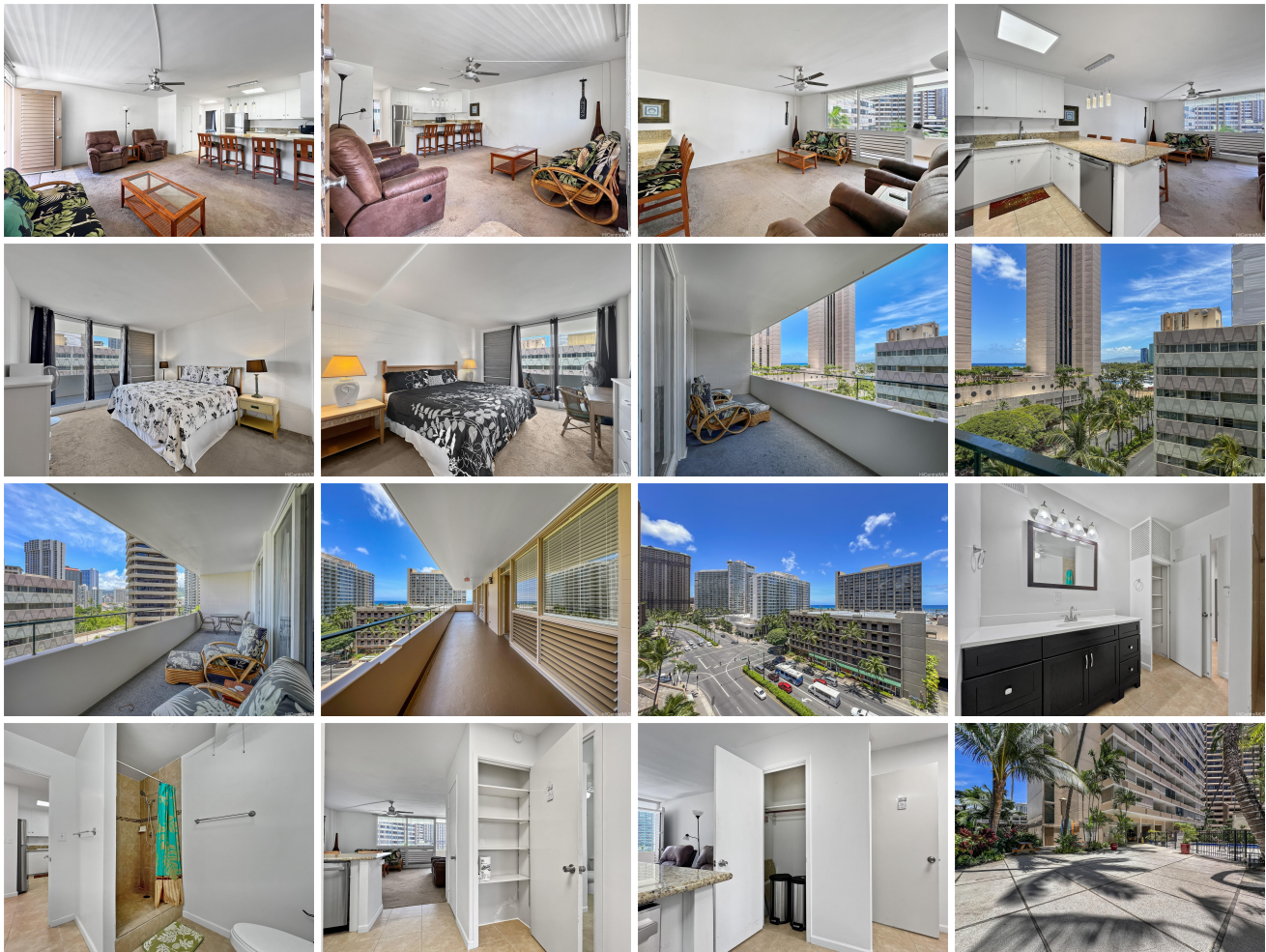


**Tradewinds Hotel Inc 1720 Ala Moana Boulevard Unit 907A, Honolulu 96815 \* Tradewinds**

**Hotel Inc \* \$249,000 \* Originally \$259,000**

Beds: <b>2</b>	MLS#: <b>202412235, LH</b>	Year Built: <b>1961</b>
Bath: <b>1/0</b>	Status: <b>Active</b>	Remodeled:
Living Sq. Ft.: <b>898</b>	List Date & DOM: <b>06-01-2024 &amp; 25</b>	Total Parking: <b>0</b>
Land Sq. Ft.: <b>0</b>	Condition: <b>Above Average, Average</b>	<a href="#">Assessed Value</a>
Lanai Sq. Ft.: <b>159</b>	Frontage:	Building: <b>\$274,100</b>
Sq. Ft. Other: <b>0</b>	Tax/Year: <b>\$0/2024</b>	Land: <b>\$83,600</b>
Total Sq. Ft. <b>1,057</b>	Neighborhood: <b>Waikiki</b>	Total: <b>\$357,700</b>
Maint./Assoc. <b>\$1,090 / \$0</b>	<a href="#">Flood Zone</a> : <b>Zone AE - Tool</b>	Stories / CPR: <b>15-20 / No</b>
Parking: <b>None</b>	Frontage:	
<a href="#">Zoning</a> : <b>X2 - Apartment Precinct</b>	View: <b>City, Coastline, Mountain, Ocean, Sunset</b>	

**Public Remarks:** NEW PRICE! FULLY FURNISHED! MOVE IN READY! Welcome to the Tradewinds Hotel Inc building featuring a spacious 2 bedroom condo, 1 full bath, open kitchen & large balcony to enjoy your coffee while admiring the fabulous views of the ocean, city, mountain and sunsets. Incredible location!!! On a major bus line. Walking distance to the world famous beaches, shops, restaurants, entertainment, surf, ocean activities that Waikiki has to offer. As you exit the elevator, you are welcomed with a wide open hallway with stunning ocean & city views as you walk towards your front door. Enjoy the island lifestyle w/ a salt water pool & lounge chairs, relax in the open-air lobby, or BBQ with friends/family. Community laundry on the top floor w/ fabulous views. Additional storage space near elevator, plus surfboard/bicycle storage. This co-op bldg is secured w/ security patrol & on-site manager. MAINTENANCE FEE INCLUDES EVERYTHING: Electric, Cable, Internet, Lease Fee, Coop Tax, Water, Sewer, Trash, other common expenses. Monthly parking is available to rent behind the building uncovered or across the street in a public covered secure garage. **Sale Conditions:** None **Schools:** , , \* [Request Showing](#), [Photos](#), [History](#), [Maps](#), [Deed](#), [Watch List](#), [Tax Info](#)





Address	Price	Bd & Bth	Living / Avg.	Land   Avg.	Lanai	Occ.	FL	DOM
<a href="#">1720 Ala Moana Boulevard 907A</a>	<b>\$249,000 LH</b>	2 & 1/0	898   \$277	0   \$inf	159	40%	9	25

Address	Tax   Maint.   Ass.	Assessed Land	Assessed Building	Assessed Total	Ratio	Year & Remodeled
<a href="#">1720 Ala Moana Boulevard 907A</a>	\$0   \$1,090   \$0	\$83,600	\$274,100	\$357,700	70%	1961 & NA

[1720 Ala Moana Boulevard 907A](#) - MLS#: [202412235](#) - Original price was \$259,000 - NEW PRICE! FULLY FURNISHED! MOVE IN READY! Welcome to the Tradewinds Hotel Inc building featuring a spacious 2 bedroom condo, 1 full bath, open kitchen & large balcony to enjoy your coffee while admiring the fabulous views of the ocean, city, mountain and sunsets. Incredible location!!! On a major bus line. Walking distance to the world famous beaches, shops, restaurants, entertainment, surf, ocean activities that Waikiki has to offer. As you exit the elevator, you are welcomed with a wide open hallway with stunning ocean & city views as you walk towards your front door. Enjoy the island lifestyle w/ a salt water pool & lounge chairs, relax in the open-air lobby, or BBQ with friends/family. Community laundry on the top floor w/ fabulous views. Additional storage space near elevator, plus surfboard/bicycle storage. This co-op bldg is secured w/ security patrol & on-site manager. MAINTENANCE FEE INCLUDES EVERYTHING: Electric, Cable, Internet, Lease Fee, Coop Tax, Water, Sewer, Trash, other common expenses. Monthly parking is available to rent behind the building uncovered or across the street in a public covered secure garage. **Region:** Metro **Neighborhood:** Waikiki **Condition:** Above Average, Average **Parking:** None **Total Parking:** 0 **View:** City, Coastline, Mountain, Ocean, Sunset **Frontage:** **Pool:** **Zoning:** X2 - Apartment Precinct **Sale Conditions:** None **Schools:** , , \* [Request Showing](#), [Photos](#), [History](#), [Maps](#), [Deed](#), [Watch List](#), [Tax Info](#)

DOM = Days on Market, Occ. = Occupancy, FL = Floor Number