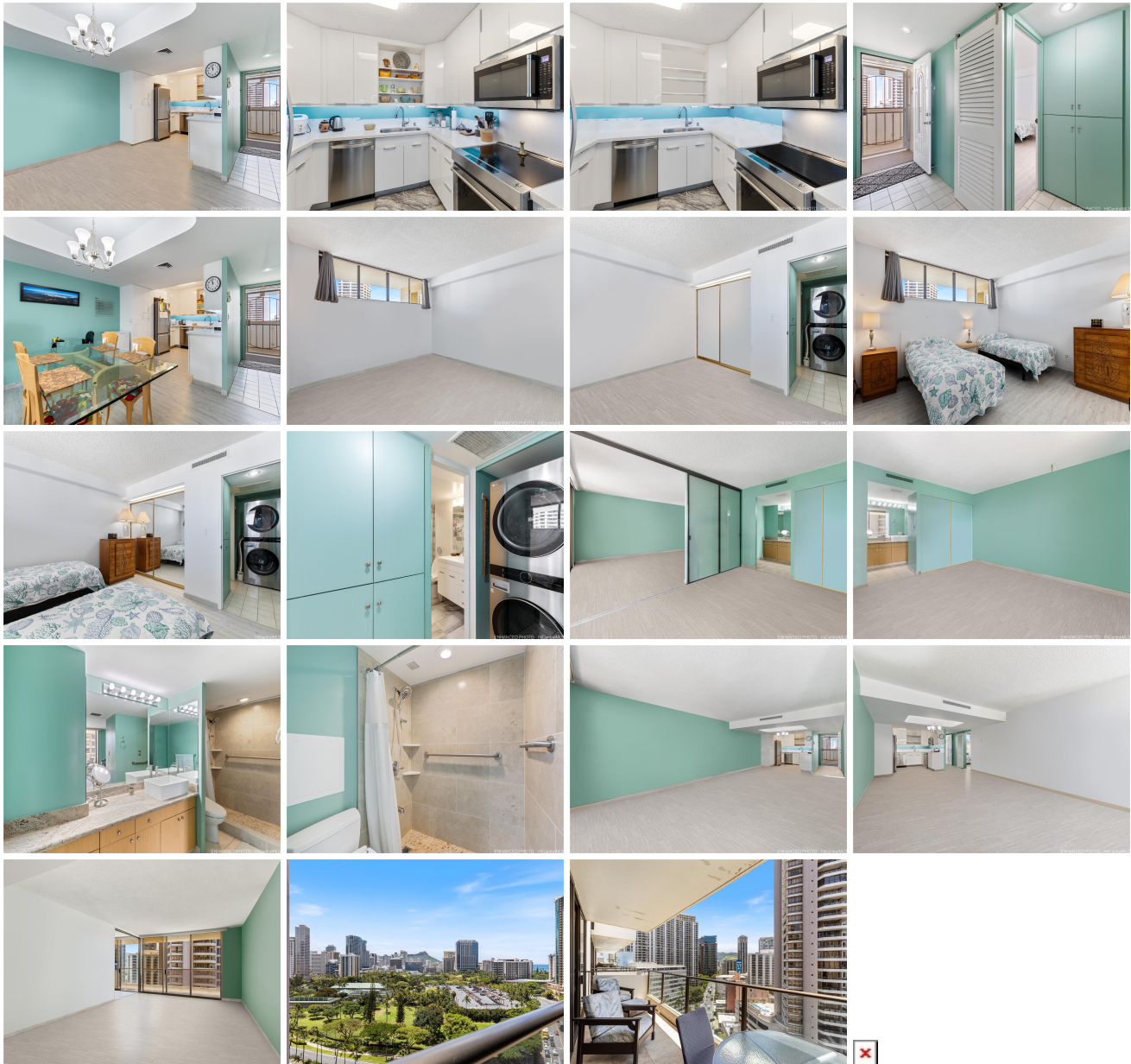


Wailana at Waikiki 1860 Ala Moana Boulevard Unit 1405, Honolulu 96815 * Wailana at Waikiki * \$330,000 * Originally \$395,999

Beds: 2	MLS#: 202412245, LH	Year Built: 1970
Bath: 2/0	Status: Active	Remodeled:
Living Sq. Ft.: 1,180	List Date & DOM: 06-04-2024 & 43	Total Parking: 1
Land Sq. Ft.: 0	Condition: Above Average, Average	Assessed Value
Lanai Sq. Ft.: 124	Frontage:	Building: \$613,200
Sq. Ft. Other: 0	Tax/Year: \$144/2024	Land: \$39,300
Total Sq. Ft. 1,304	Neighborhood: Waikiki	Total: \$652,500
Maint./Assoc. \$1,064 / \$0	Flood Zone : Zone AE - Tool	Stories / CPR: 21+ / No
Parking: Covered - 1	Frontage:	
Zoning : X2 - Apartment Precinct	View: Diamond Head, Mountain, Ocean	

Public Remarks: The joy of island living with this fully renovated, top-quality condo nestled in the heart of Waikiki. This Open Concept home boasts unparalleled views of Diamond Head, the Pacific Ocean, and the majestic Ko'olau Mountain Range from the Lanai! The "Cook" in you will love the kitchen which boast a top of the line induction range with 2 ovens, an abundance of prep, a pantry with pull out shelves, and even a Broom/Vacuum closet. You will find an abundance of cupboard space not often seen in a condo. Two full bathrooms, one of which has a walk in shower and the other is a deep soaking tub. Custom frosted glass sliding doors allow you to close off the front bedroom and remote controlled blinds provide both privacy and shade if needed. Don't let this chance for luxurious living in a convenient location slip through your fingers, especially with the newly opened Island Country Store by ABC Stores nestled on the ground floor, ensuring effortless access to all your essentials. **Sale Conditions:** None **Schools:** [Ala Wai](#), [Washington](#), [Kaimuki](#) * [Request Showing](#), [Photos](#), [History](#), [Maps](#), [Deed](#), [Watch List](#), [Tax Info](#)



Address	Price	Bd & Bth	Living / Avg.	Land Avg.	Lanai	Occ.	FL	DOM
1860 Ala Moana Boulevard 1405	\$330,000 LH	2 & 2/0	1,180 \$280	0 \$inf	124	50%	14	43

Address	Tax Maint. Ass.	Assessed Land	Assessed Building	Assessed Total	Ratio	Year & Remodeled
1860 Ala Moana Boulevard 1405	\$144 \$1,064 \$0	\$39,300	\$613,200	\$652,500	51%	1970 & NA

[1860 Ala Moana Boulevard 1405](#) - MLS#: [202412245](#) - Original price was \$395,999 - The joy of island living with this fully renovated, top-quality condo nestled in the heart of Waikiki. This Open Concept home boasts unparalleled views of Diamond Head, the Pacific Ocean, and the majestic Ko'olau Mountain Range from the Lanai! The "Cook" in you will love the kitchen which boast a top of the line induction range with 2 ovens, an abundance of prep, a pantry with pull out shelves, and even a Broom/Vacuum closet. You will find an abundance of cupboard space not often seen in a condo. Two full bathrooms, one of which has a walk in shower and the other is a deep soaking tub. Custom frosted glass sliding doors allow you to close off the front bedroom and remote controlled blinds provide both privacy and shade if needed. Don't let this chance for luxurious living in a convenient location slip through your fingers, especially with the newly opened Island Country Store by ABC Stores nestled on the ground floor, ensuring effortless access to all your essentials. **Region:** Metro **Neighborhood:** Waikiki **Condition:** Above Average, Average **Parking:** Covered - 1 **Total Parking:** 1 **View:** Diamond Head, Mountain, Ocean **Frontage:** **Pool:** **Zoning:** X2 - Apartment Precinct **Sale Conditions:** None **Schools:** [Ala Wai](#), [Washington](#), [Kaimuki](#) * [Request Showing](#), [Photos](#), [History](#), [Maps](#), [Deed](#), [Watch List](#), [Tax Info](#)

DOM = Days on Market, Occ. = Occupancy, FL = Floor Number