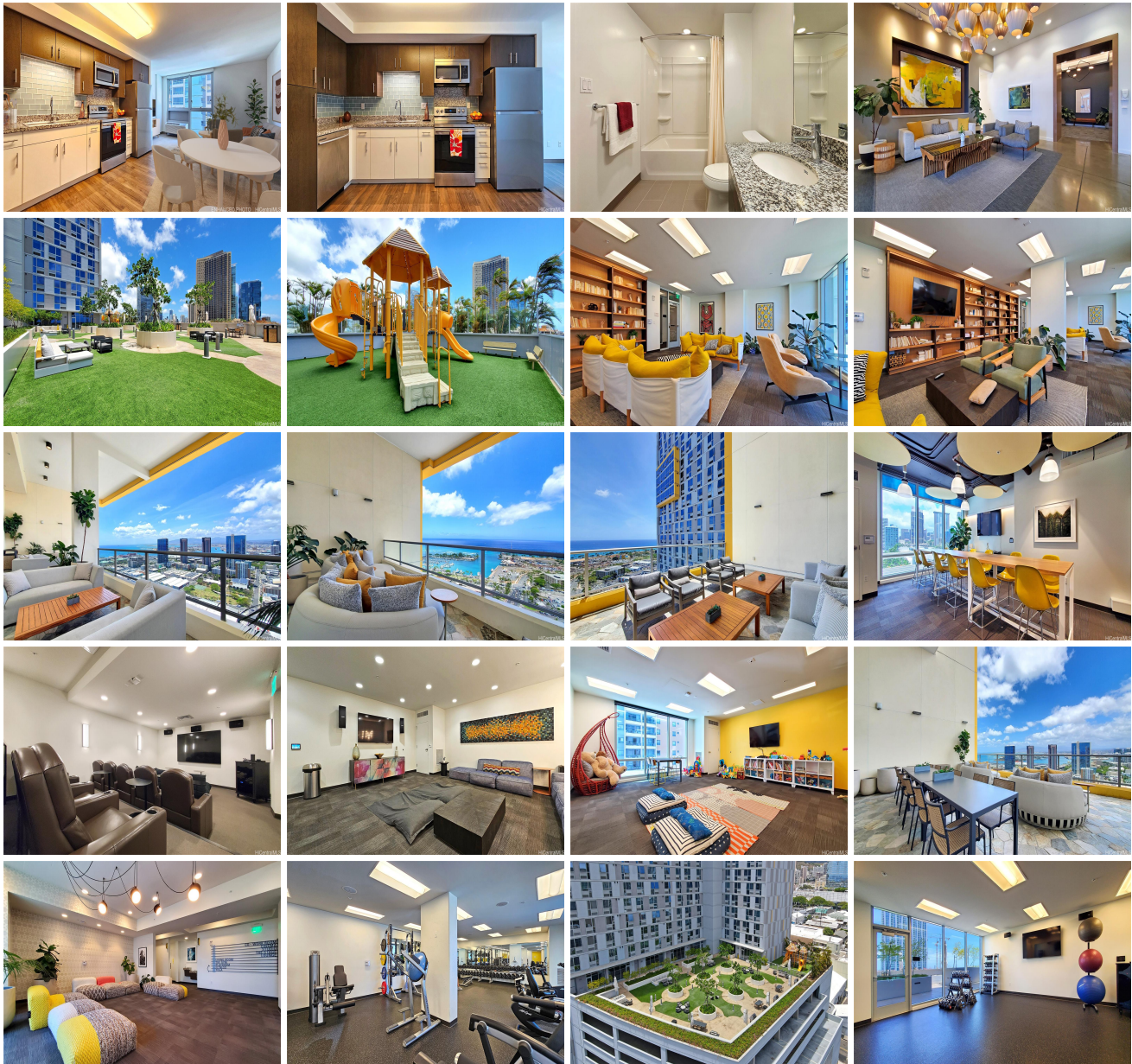
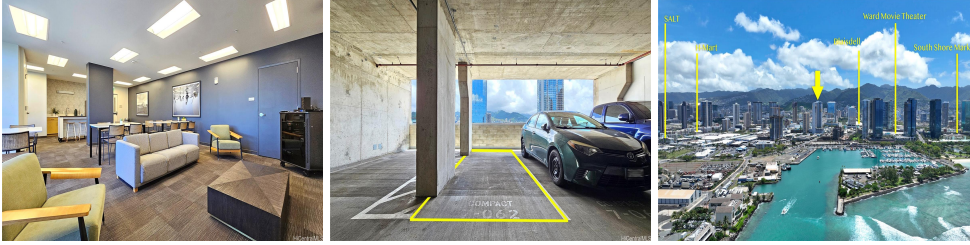


988 Halekauwila 988 Halekauwila Street Unit 1104, Honolulu 96814 * \$538,000

Bed: 1	MLS#: 202412254, FS	Year Built: 2017
Bath: 1/0	Status: Active	Remodeled:
Living Sq. Ft.: 503	List Date & DOM: 06-03-2024 & 27	Total Parking: 1
Land Sq. Ft.: 0	Condition: Above Average	Assessed Value
Lanai Sq. Ft.: 0	Frontage:	Building: \$558,000
Sq. Ft. Other: 0	Tax/Year: \$127/2024	Land: \$21,300
Total Sq. Ft. 503	Neighborhood: Kakaako	Total: \$576,300
Maint./Assoc. \$605 / \$27	Flood Zone : Zone AE - Tool	Stories / CPR: 21+ / No
Parking: Assigned, Covered - 1, Garage, Guest, Secured Entry	Frontage:	
Zoning : Kak - Kakaako Community Development Project	View: City, Mountain, Ocean	

Public Remarks: Spacious and open floor plan! This 1-bedroom, 1-bath, 1 parking (covered with secured entry) unit at Ke Kilohana includes A/C, in-unit washer/dryer, stainless appliances, granite countertops and walk-in closet. Excellent location in Ward Village and close to Ala Moana Beach. Minutes to parks, surfing, shopping, dining, entertainment, Ala Moana Center, Whole Foods, Salt at Kakaako, UH Medical School, and so much more! Gorgeous amenities include two distinctive sky lanais with breathtaking ocean and mountain views. There's also a movie theater, music studio, modern fitness center, yoga studio, storage for bikes and surfboards, a dog run, versatile workspace, indoor and outdoor children's play areas, barbecue area, and cozy lounges. Pet friendly building, and convenient on-site Longs Drugs store right downstairs. 25 guest parking spots, including 4 with EV chargers. Don't miss out on this new building, built only 7 years ago! Other fees: TV & Internet \$49.26 and Ward Village Assoc \$27.32/month. **Sale Conditions:** None **Schools:** [Royal](#), [Mckinley](#) * [Request Showing](#), [Photos](#), [History](#), [Maps](#), [Deed](#), [Watch List](#), [Tax Info](#)





Address	Price	Bd & Bth	Living / Avg.	Land Avg.	DOM
988 Halekauwila Street 1104	\$538,000	1 & 1/0	503 \$1,070	0 \$inf	27

Address	Tax Maint. Ass.	Assessed Land	Assessed Building	Assessed Total	Ratio	Year & Remodeled
988 Halekauwila Street 1104	\$127 \$605 \$27	\$21,300	\$558,000	\$576,300	93%	2017 & NA

[988 Halekauwila Street 1104](#) - MLS#: [202412254](#) - Spacious and open floor plan! This 1-bedroom, 1-bath, 1 parking (covered with secured entry) unit at Ke Kilohana includes A/C, in-unit washer/dryer, stainless appliances, granite countertops and walk-in closet. Excellent location in Ward Village and close to Ala Moana Beach. Minutes to parks, surfing, shopping, dining, entertainment, Ala Moana Center, Whole Foods, Salt at Kakaako, UH Medical School, and so much more! Gorgeous amenities include two distinctive sky lanais with breathtaking ocean and mountain views. There's also a movie theater, music studio, modern fitness center, yoga studio, storage for bikes and surfboards, a dog run, versatile workspace, indoor and outdoor children's play areas, barbecue area, and cozy lounges. Pet friendly building, and convenient on-site Longs Drugs store right downstairs. 25 guest parking spots, including 4 with EV chargers. Don't miss out on this new building, built only 7 years ago! Other fees: TV & Internet \$49.26 and Ward Village Assoc \$27.32/month. **Region:** Metro **Neighborhood:** Kakaako **Condition:** Above Average **Parking:** Assigned, Covered - 1, Garage, Guest, Secured Entry **Total Parking:** 1 **View:** City, Mountain, Ocean **Frontage:** **Pool:** **Zoning:** Kak - Kakaako Community Development Project **Sale Conditions:** None **Schools:** [Royal](#), [Mckinley](#) * [Request Showing](#), [Photos](#), [History](#), [Maps](#), [Deed](#), [Watch List](#), [Tax Info](#)

DOM = Days on Market