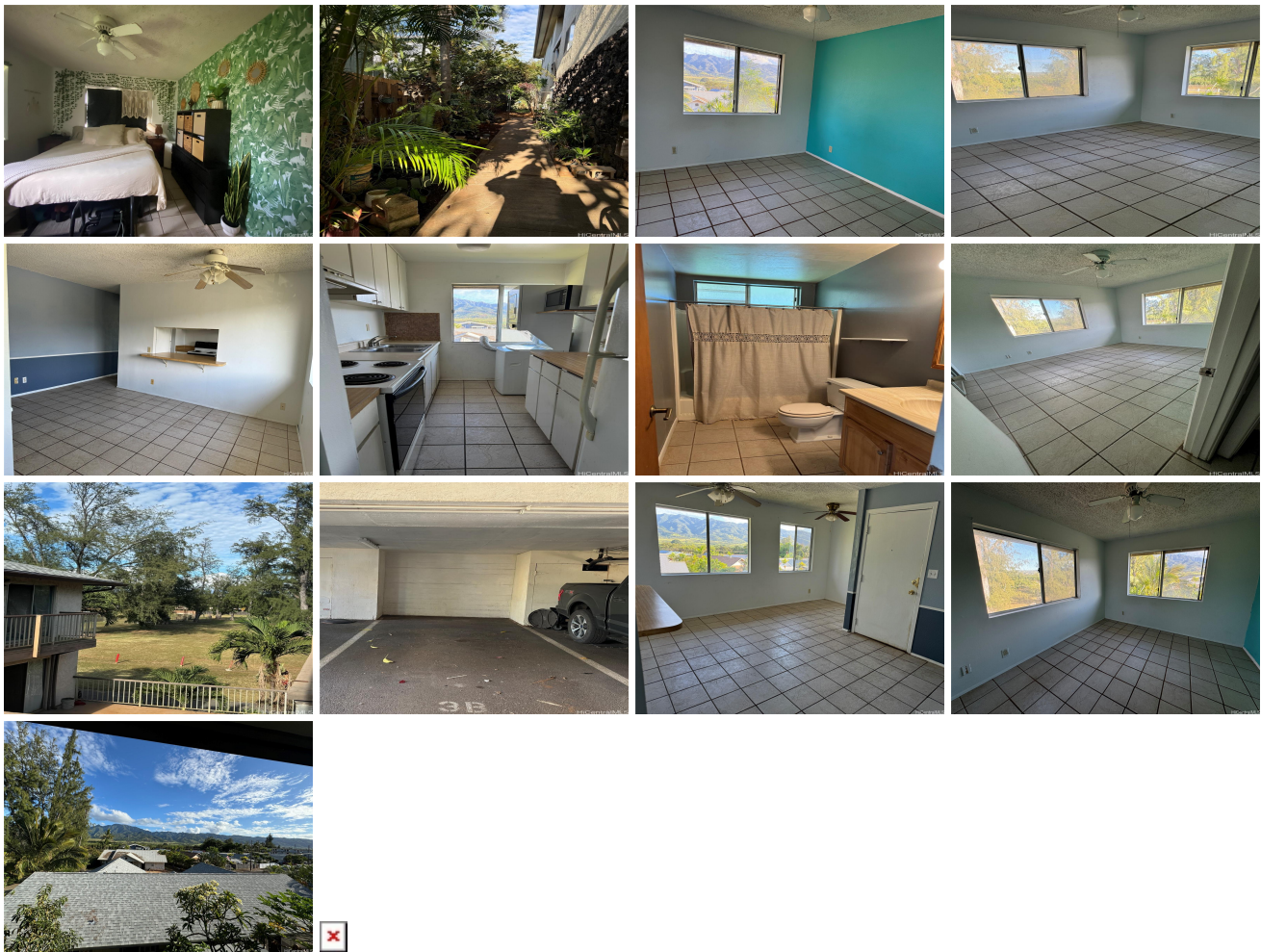


Puuiki Hale 68-077 Au Street Unit 3B, Waialua 96791 * Puuiki Hale * \$375,000

Beds: 1	MLS#: 202412267, FS	Year Built: 1973
Bath: 1/0	Status: Active	Remodeled:
Living Sq. Ft.: 602	List Date & DOM: 05-31-2024 & 43	Total Parking: 1
Land Sq. Ft.: 10,280	Condition: Fair	Assessed Value
Lanai Sq. Ft.: 0	Frontage: Other	Building: \$285,000
Sq. Ft. Other: 0	Tax/Year: \$103/2023	Land: \$67,500
Total Sq. Ft. 602	Neighborhood: Waialua	Total: \$352,500
Maint./Assoc. \$708 / \$0	Flood Zone : Zone AE - Tool	Stories / CPR: One / No
Parking: Assigned, Covered - 1	Frontage: Other	
Zoning : 11 - A-1 Low Density Apartment	View: Mountain	

Public Remarks: This 1 bedroom/1 bath, corner unit with beautiful mountain views is a must see. Located on the 3rd floor with 1 covered parking and close to nearby sandy beach, Aweoweo Beach Park is a rare find. Explore the endless possibilities of what Waialua community has to offer! From swimming, snorkeling, paddle boarding and few minutes drive to Haleiwa's dining and shops. Puuiki Hale has a newly installed roof and with your special touch, you can own this unit at an affordable price. Being SOLD AS-IS. **Sale Conditions:** None **Schools:** , , * [Request Showing](#), [Photos](#), [History](#), [Maps](#), [Deed](#), [Watch List](#), [Tax Info](#)



Address	Price	Bd & Bth	Living / Avg.	Land Avg.	Lanai	Occ.	FL	DOM
68-077 Au Street 3B	\$375,000	1 & 1/0	602 \$623	10,280 \$36	0	71%	3	43

Address	Tax Maint. Ass.	Assessed Land	Assessed Building	Assessed Total	Ratio	Year & Remodeled
68-077 Au Street 3B	\$103 \$708 \$0	\$67,500	\$285,000	\$352,500	106%	1973 & NA

[68-077 Au Street 3B](#) - MLS#: [202412267](#) - This 1 bedroom/1 bath, corner unit with beautiful mountain views is a must see. Located on the 3rd floor with 1 covered parking and close to nearby sandy beach, Aweoweo Beach Park is a rare find. Explore the endless possibilities of what Waialua community has to offer! From swimming, snorkeling, paddle boarding and few minutes drive to Haleiwa's dining and shops. Puuiki Hale has a newly installed roof and with your special touch, you can own this unit at an affordable price. Being SOLD AS-IS. **Region:** North Shore **Neighborhood:** Waialua **Condition:** Fair **Parking:** Assigned, Covered - 1 **Total Parking:** 1 **View:** Mountain **Frontage:** Other **Pool:** **Zoning:** 11 - A-1 Low Density Apartment **Sale Conditions:** None **Schools:** , , * [Request Showing](#), [Photos](#), [History](#), [Maps](#), [Deed](#), [Watch List](#), [Tax Info](#)

DOM = Days on Market, Occ. = Occupancy, FL = Floor Number