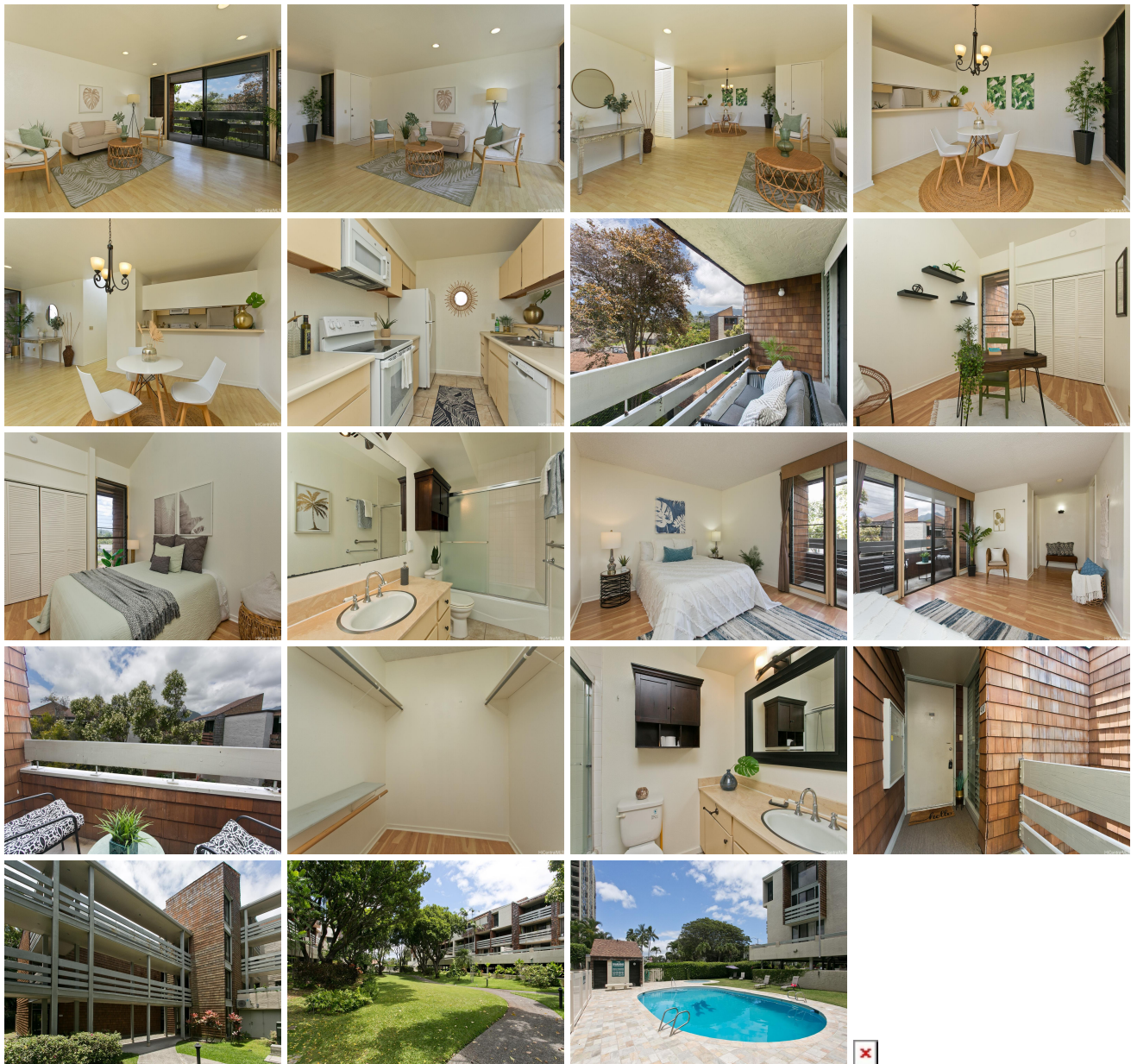


Gardenia Manor 333 Aoloa Street Unit 408, Kailua 96734 * Gardenia Manor * \$850,000

Beds: 3	MLS#: 202412269, FS	Year Built: 1974
Bath: 2/0	Status: Active	Remodeled:
Living Sq. Ft.: 1,303	List Date & DOM: 06-14-2024 & 13	Total Parking: 2
Land Sq. Ft.: 130,680	Condition: Average	Assessed Value
Lanai Sq. Ft.: 149	Frontage:	Building: \$512,000
Sq. Ft. Other: 0	Tax/Year: \$222/2024	Land: \$250,800
Total Sq. Ft. 1,452	Neighborhood: Kailua Town	Total: \$762,800
Maint./Assoc. \$946 / \$0	Flood Zone : Zone X - Tool	Stories / CPR: One / No
Parking: Assigned, Covered - 2, Guest	Frontage:	
Zoning : 12 - A-2 Medium Density Apartme	View: None	

Public Remarks: Unique Top-Floor Gem in Prime Location - Welcome to a rare find in Gardenia Manor - one of only two units with this floor plan. This top-floor, 3-bedroom, 2-bathroom condo offers a bright and airy atmosphere, perfect for those seeking a blend of comfort and convenience. Once inside you discover a home that's ready for your personal touches. While maintaining its original charm, the condo features newer paint, flooring, washer/dryer and hot water heater. The kitchen is functional and efficient, awaiting your creative vision to transform it into a culinary haven. The primary suite has a generous walk in closet and private lanai. The second and third bedrooms are generously sized. Both bathrooms are in great original condition, providing a clean slate for modern upgrades. Located in a prime spot within the complex. The condo has a storage unit, two side by side covered parking stalls, two lanais for unique indoor/outdoor living. Complex has a pool, party area, beautiful grounds, and convenient location to shopping, restaurants and the beach. **Sale Conditions:** None **Schools:** , , * [Request Showing](#), [Photos](#), [History](#), [Maps](#), [Deed](#), [Watch List](#), [Tax Info](#)



Address	Price	Bd & Bth	Living / Avg.	Land Avg.	Lanai	Occ.	FL	DOM
333 Aoloa Street 408	\$850,000	3 & 2/0	1,303 \$652	130,680 \$7	149	55%	4	13

Address	Tax Maint. Ass.	Assessed Land	Assessed Building	Assessed Total	Ratio	Year & Remodeled
333 Aoloa Street 408	\$222 \$946 \$0	\$250,800	\$512,000	\$762,800	111%	1974 & NA

[333 Aoloa Street 408](#) - MLS#: [202412269](#) - Unique Top-Floor Gem in Prime Location - Welcome to a rare find in Gardenia Manor - one of only two units with this floor plan. This top-floor, 3-bedroom, 2-bathroom condo offers a bright and airy atmosphere, perfect for those seeking a blend of comfort and convenience. Once inside you discover a home that's ready for your personal touches. While maintaining its original charm, the condo features newer paint, flooring, washer/dryer and hot water heater. The kitchen is functional and efficient, awaiting your creative vision to transform it into a culinary haven. The primary suite has a generous walk in closet and private lanai. The second and third bedrooms are generously sized. Both bathrooms are in great original condition, providing a clean slate for modern upgrades. Located in a prime spot within the complex. The condo has a storage unit, two side by side covered parking stalls, two lanais for unique indoor/outdoor living. Complex has a pool, party area, beautiful grounds, and convenient location to shopping, restaurants and the beach. **Region:** Kailua **Neighborhood:** Kailua Town **Condition:** Average **Parking:** Assigned, Covered - 2, Guest **Total Parking:** 2 **View:** None **Frontage:** **Pool:** **Zoning:** 12 - A-2 Medium Density Apartme **Sale Conditions:** None **Schools:** , , * [Request Showing](#), [Photos](#), [History](#), [Maps](#), [Deed](#), [Watch List](#), [Tax Info](#)

DOM = Days on Market, Occ. = Occupancy, FL = Floor Number