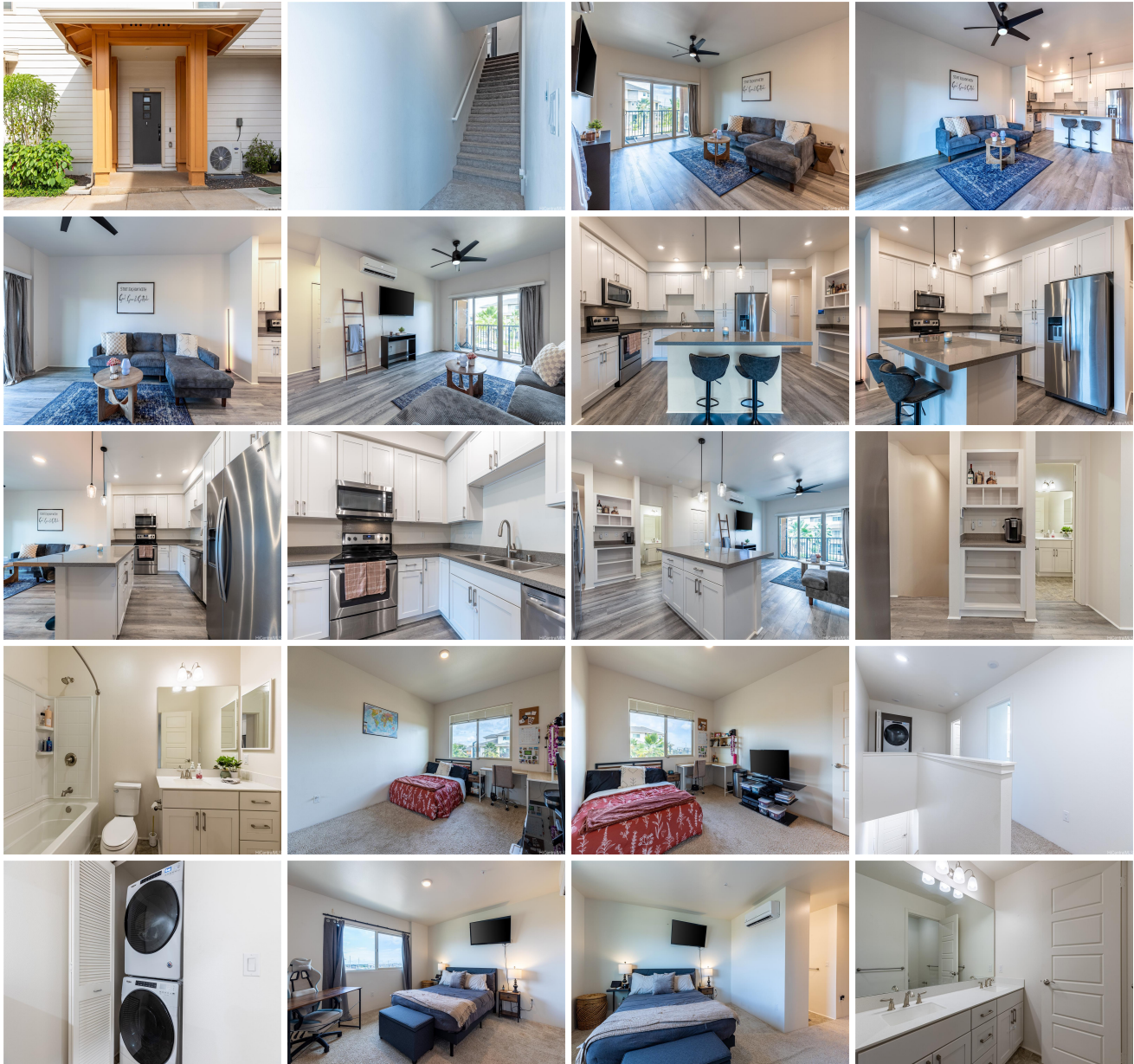


**Kohina at Hoopili 91-3575 Kauluakoko Street Unit 1410, Ewa Beach 96706 \* \$799,000 \***

**Originally \$825,000**

Beds: <b>3</b>	MLS#: <b>202412295, FS</b>	Year Built: <b>2019</b>
Bath: <b>3/0</b>	Status: <b>Active</b>	Remodeled:
Living Sq. Ft.: <b>1,504</b>	List Date & DOM: <b>06-01-2024 &amp; 27</b>	Total Parking: <b>2</b>
Land Sq. Ft.: <b>0</b>	Condition: <b>Excellent, Above Average</b>	<a href="#">Assessed Value</a>
Lanai Sq. Ft.: <b>0</b>	Frontage: <b>Other</b>	Building: <b>\$558,400</b>
Sq. Ft. Other: <b>0</b>	Tax/Year: <b>\$212/2023</b>	Land: <b>\$238,700</b>
Total Sq. Ft. <b>1,504</b>	Neighborhood: <b>Hoopili-kohina</b>	Total: <b>\$797,100</b>
Maint./Assoc. <b>\$433 / \$78</b>	<a href="#">Flood Zone</a> : <b>Zone D - Tool</b>	Stories / CPR: <b>Two / No</b>
Parking: <b>Assigned, Guest, Open - 2, Street</b>	Frontage: <b>Other</b>	
<a href="#">Zoning</a> : <b>12 - A-2 Medium Density Apartme</b>	View: <b>None</b>	

**Public Remarks:** If you're looking for a 3-bedroom, 3-full bathroom townhome with over 1,500 square feet in Kohina at Hoopili, then look no further! This incredible property is the one you've been waiting for! Perfectly situated on the famous "Festival Street" in the heart of Hoopili, this unique townhome features not one, but two primary bedrooms with en-suites, large bedrooms, an open concept living room and kitchen, and a generously-sized balcony with front row seats to all the excitement happening down on Festival Street! Steps away from Teaspresso, Sage Creamery, and the newest Dominos on island, you're also within walking distance of the future community garden, doggie & kiddie parks, soccer field, the SOHO recreation center and community pool, and the soon-to-open basketball, pickleball, and volleyball courts! **OPEN HOUSE Saturday, 6/15 from 2:00-5:00pm! Sale Conditions:** None **Schools:** [Ewa](#), [Honouliuli](#), [Kapolei](#) \* [Request Showing](#), [Photos](#), [History](#), [Maps](#), [Deed](#), [Watch List](#), [Tax Info](#)





Address	Price	Bd & Bth	Living / Avg.	Land   Avg.	DOM
<a href="#">91-3575 Kauluakoko Street 1410</a>	<b>\$799,000</b>	3 & 3/0	1,504   \$531	0   \$inf	27

Address	Tax   Maint.   Ass.	Assessed Land	Assessed Building	Assessed Total	Ratio	Year & Remodeled
<a href="#">91-3575 Kauluakoko Street 1410</a>	\$212   \$433   \$78	\$238,700	\$558,400	\$797,100	100%	2019 & NA

[91-3575 Kauluakoko Street 1410](#) - MLS#: [202412295](#) - Original price was \$825,000 - If you're looking for a 3-bedroom, 3-full bathroom townhome with over 1,500 square feet in Kohina at Hoopili, then look no further! This incredible property is the one you've been waiting for! Perfectly situated on the famous "Festival Street" in the heart of Hoopili, this unique townhome features not one, but two primary bedrooms with en-suites, large bedrooms, an open concept living room and kitchen, and a generously-sized balcony with front row seats to all the excitement happening down on Festival Street! Steps away from Teaspresso, Sage Creamery, and the newest Dominos on island, you're also within walking distance of the future community garden, doggie & kiddie parks, soccer field, the SOHO recreation center and community pool, and the soon-to-open basketball, pickleball, and volleyball courts! OPEN HOUSE Saturday, 6/15 from 2:00-5:00pm! **Region:** Ewa Plain  
**Neighborhood:** Hoopili-kohina **Condition:** Excellent, Above Average **Parking:** Assigned, Guest, Open - 2, Street **Total Parking:** 2 **View:** None **Frontage:** Other **Pool:** **Zoning:** 12 - A-2 Medium Density Apartme **Sale Conditions:** None  
**Schools:** [Ewa](#), [Honouliuli](#), [Kapolei](#) \* [Request Showing](#), [Photos](#), [History](#), [Maps](#), [Deed](#), [Watch List](#), [Tax Info](#)

DOM = Days on Market