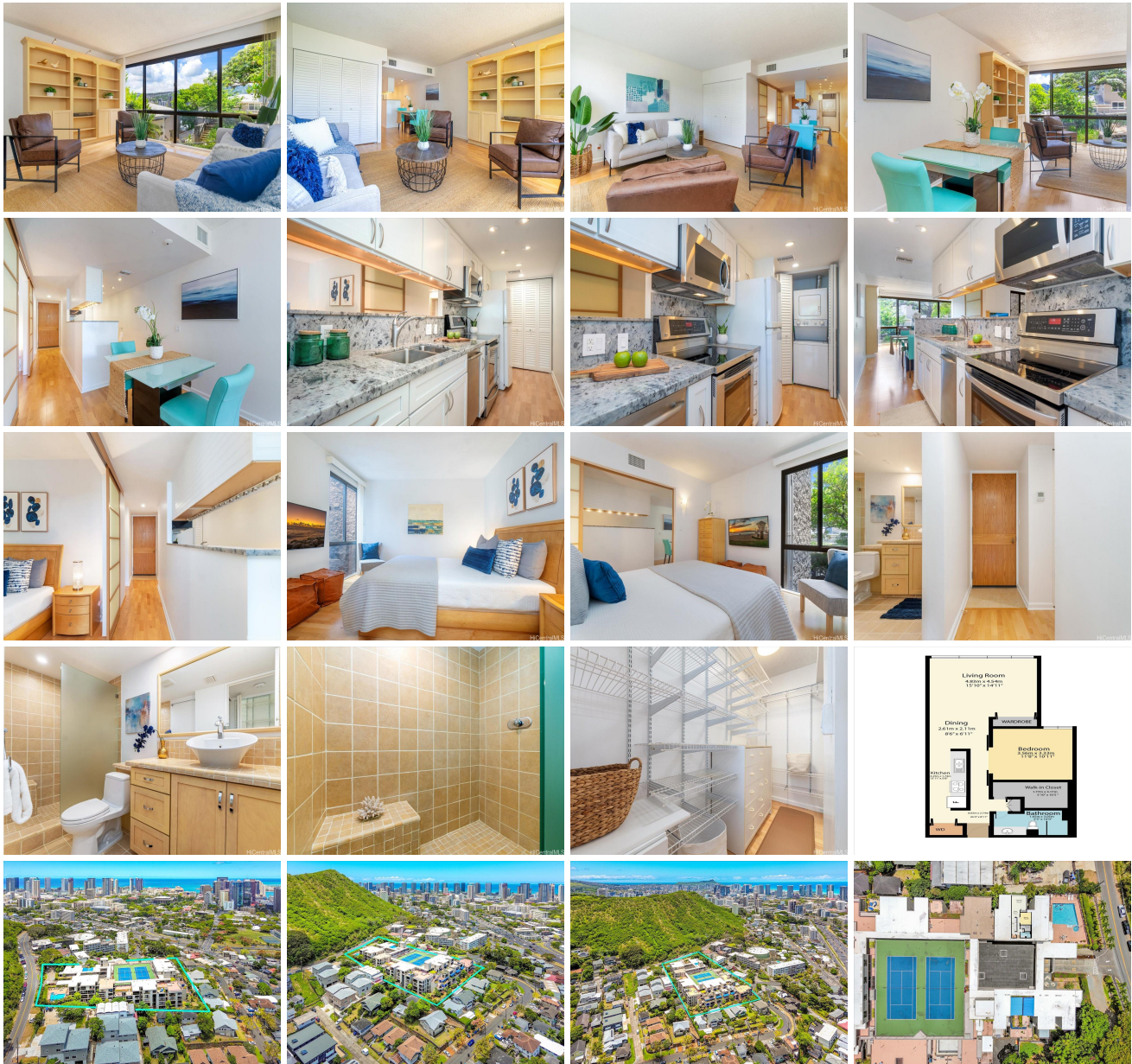


Dowsett Point 217 Prospect Street Unit M12, Honolulu 96813 * Dowsett Point * \$528,000

Beds: 1	MLS#: 202412309, FS	Year Built: 1980
Bath: 1/0	Status: Active	Remodeled:
Living Sq. Ft.: 771	List Date & DOM: 06-14-2024 & 33	Total Parking: 1
Land Sq. Ft.: 0	Condition: Excellent	Assessed Value
Lanai Sq. Ft.: 0	Frontage:	Building: \$380,800
Sq. Ft. Other: 0	Tax/Year: \$95/2024	Land: \$98,500
Total Sq. Ft. 771	Neighborhood: Punchbowl Area	Total: \$479,300
Maint./Assoc. \$808 / \$0	Flood Zone : Zone X - Tool	Stories / CPR: 8-14 / No
Parking: Assigned, Covered - 1, Garage, Guest, Secured Entry	Frontage:	
Zoning : 12 - A-2 Medium Density Apartme	View: City, Mountain	

Public Remarks: Visit OPEN HOUSE on July 21st at 2pm-5pm. Tastefully and entirely renovated! This extra spacious one-bedroom, one-bath condo suite offers a turn-key, complete pride of ownership condition. Quality improvements includes customized installed central AC for cool comfort living year round, Kährs Scandinavian Beech hardwood floors throughout with custom baseboards, complete reconstructed kitchen, bathroom, walk-in closet, custom built doors, custom built-in living room bookcase and so many more, a must see to appreciate the great workmanship with over \$132k in improvements. Enjoy the natural lighting from the floor-to-ceiling windows, functional, efficient floor plan and the most convenient location on the main level near the building entrance, pool amenity and the up coming proposed landscape courtyard. Dowsett Point is a gated residential condo community located on the slopes of Punchbowl crater. Commute with ease to downtown Honolulu, medical facilities, Pali Hwy, freeway access, local eateries and many more essentials of the historically and culturally rich residential neighborhood of Punchbowl. This is a VA approved and pet-friendly building. **Sale Conditions:** None **Schools:** [Royal, Kawanakoa, Roosevelt](#) * [Request Showing](#), [Photos](#), [History](#), [Maps](#), [Deed](#), [Watch List](#), [Tax Info](#)





Address	Price	Bd & Bth	Living / Avg.	Land Avg.	Lanai	Occ.	FL	DOM
217 Prospect Street M12	\$528,000	1 & 1/0	771 \$685	0 \$inf	0	64%	8	33

Address	Tax Maint. Ass.	Assessed Land	Assessed Building	Assessed Total	Ratio	Year & Remodeled
217 Prospect Street M12	\$95 \$808 \$0	\$98,500	\$380,800	\$479,300	110%	1980 & NA

[217 Prospect Street M12](#) - MLS#: [202412309](#) - Visit OPEN HOUSE on July 21st at 2pm-5pm. Tastefully and entirely renovated! This extra spacious one-bedroom, one-bath condo suite offers a turn-key, complete pride of ownership condition. Quality improvements includes customized installed central AC for cool comfort living year round, Kährs Scandinavian Beech hardwood floors throughout with custom baseboards, complete reconstructed kitchen, bathroom, walk-in closet, custom built doors, custom built-in living room bookcase and so many more, a must see to appreciate the great workmanship with over \$132k in improvements. Enjoy the natural lighting from the floor-to-ceiling windows, functional, efficient floor plan and the most convenient location on the main level near the building entrance, pool amenity and the up coming proposed landscape courtyard. Dowsett Point is a gated residential condo community located on the slopes of Punchbowl crater. Commute with ease to downtown Honolulu, medical facilities, Pali Hwy, freeway access, local eateries and many more essentials of the historically and culturally rich residential neighborhood of Punchbowl. This is a VA approved and pet-friendly building.
Region: Metro **Neighborhood:** Punchbowl Area **Condition:** Excellent **Parking:** Assigned, Covered - 1, Garage, Guest, Secured Entry **Total Parking:** 1 **View:** City, Mountain **Frontage:** **Pool:** **Zoning:** 12 - A-2 Medium Density Apartme **Sale Conditions:** None **Schools:** [Royal](#), [Kawananakoa](#), [Roosevelt](#) * [Request Showing](#), [Photos](#), [History](#), [Maps](#), [Deed](#), [Watch List](#), [Tax Info](#)

DOM = Days on Market, Occ. = Occupancy, FL = Floor Number