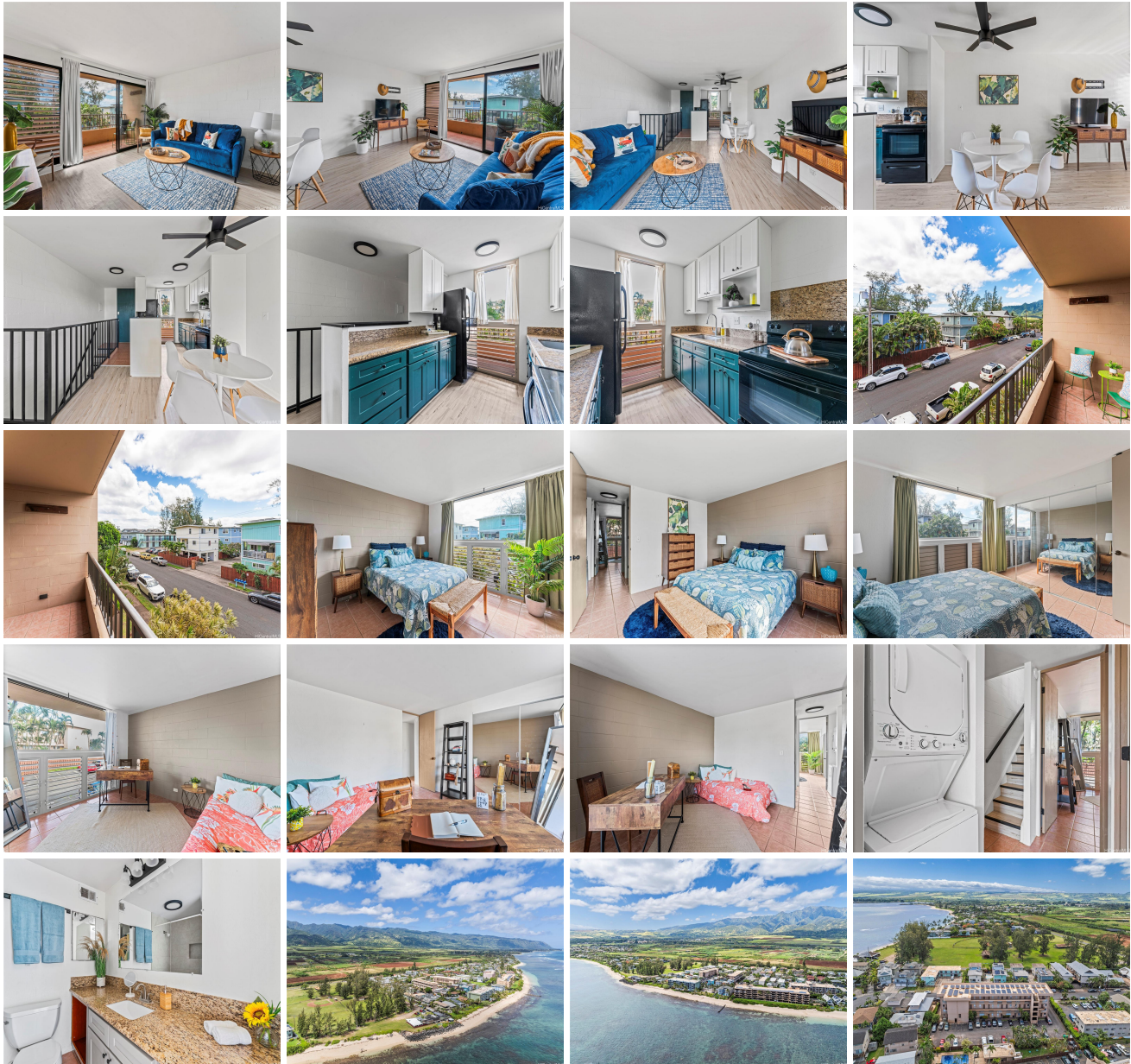


## **Ono Vista 68-090 Au Street Unit E304, Waialua 96791 \* \$555,000**

Beds: <b>2</b>	MLS#: <b><u>202412312</u>, FS</b>	Year Built: <b>1975</b>
Bath: <b>1/0</b>	Status: <b>Active</b>	Remodeled: <b>2018</b>
Living Sq. Ft.: <b>788</b>	List Date & DOM: <b>06-10-2024 &amp; 33</b>	Total Parking: <b>2</b>
Land Sq. Ft.: <b>51,662</b>	Condition: <b>Above Average</b>	<a href="#">Assessed Value</a>
Lanai Sq. Ft.: <b>76</b>	Frontage: <b>Other</b>	Building: <b>\$441,000</b>
Sq. Ft. Other: <b>0</b>	Tax/Year: <b>\$150/2023</b>	Land: <b>\$72,600</b>
Total Sq. Ft. <b>864</b>	Neighborhood: <b>Waialua</b>	Total: <b>\$513,600</b>
Maint./Assoc. <b>\$966 / \$0</b>	<a href="#">Flood Zone</a> : <b>Zone VE - Tool</b>	Stories / CPR: <b>Two / No</b>
Parking: <b>Assigned, Open - 2, Street</b>	Frontage: <b>Other</b>	
<a href="#">Zoning</a> : <b>12 - A-2 Medium Density Apartme</b>	View: <b>Coastline, Mountain</b>	

**Public Remarks:** VA Assumable with 3.75% interest rate! Embrace North Shore living in this beautiful 2 bedroom, 1 bath split-level unit situated just moments away from the Aweoweo Beach. Partially renovated with a newly painted kitchen and LVP wood-look flooring upstairs, this unit is the perfect place to call home. Step into the main living area and you're greeted by an open concept kitchen, living, and dining space full of natural light. The spacious lanai is a welcoming space to relax and listen to the waves crash in the evenings. Downstairs you'll find a full bathroom, two large bedrooms, washer and dryer, and ample closet storage. Owners in Ono Vista have access to a saltwater pool and sauna, conveniently located just downstairs. Tucked away in the quiet streets of Waialua, you're just minutes from all Historic Haleiwa town and the picturesque North Shore has to offer, yet just a short 15 minute drive to H2 access. Schedule a private showing to view this beauty today. **Sale Conditions:** None **Schools:** [Waialua](#), [Waialua](#), [Waialua](#) \* [Request Showing](#), [Photos](#), [History](#), [Maps](#), [Deed](#), [Watch List](#), [Tax Info](#)





Address	Price	Bd & Bth	Living / Avg.	Land   Avg.	DOM
<a href="#">68-090 Au Street E304</a>	<a href="#">\$555,000</a>	2 & 1/0	788   \$704	51,662   \$11	33

Address	Tax   Maint.   Ass.	Assessed Land	Assessed Building	Assessed Total	Ratio	Year & Remodeled
<a href="#">68-090 Au Street E304</a>	\$150   \$966   \$0	\$72,600	\$441,000	\$513,600	108%	1975 & 2018

[68-090 Au Street E304](#) - MLS#: [202412312](#) - VA Assumable with 3.75% interest rate! Embrace North Shore living in this beautiful 2 bedroom, 1 bath split-level unit situated just moments away from the Aweoweo Beach. Partially renovated with a newly painted kitchen and LVP wood-look flooring upstairs, this unit is the perfect place to call home. Step into the main living area and you're greeted by an open concept kitchen, living, and dining space full of natural light. The spacious lanai is a welcoming space to relax and listen to the waves crash in the evenings. Downstairs you'll find a full bathroom, two large bedrooms, washer and dryer, and ample closet storage. Owners in Ono Vista have access to a saltwater pool and sauna, conveniently located just downstairs. Tucked away in the quiet streets of Waialua, you're just minutes from all Historic Haleiwa town and the picturesque North Shore has to offer, yet just a short 15 minute drive to H2 access. Schedule a private showing to view this beauty today. **Region:** North Shore **Neighborhood:** Waialua **Condition:** Above Average **Parking:** Assigned, Open - 2, Street **Total Parking:** 2 **View:** Coastline, Mountain **Frontage:** Other **Pool:** **Zoning:** 12 - A-2 Medium Density Apartme **Sale Conditions:** None **Schools:** [Waialua](#), [Waialua](#), [Waialua](#) \* [Request Showing](#), [Photos](#), [History](#), [Maps](#), [Deed](#), [Watch List](#), [Tax Info](#)

DOM = Days on Market