

Nuuanu Brookside 55 S Judd Street Unit 608, Honolulu 96817 * Nuuanu Brookside *

\$292,000

Beds: **0**
Bath: **1/0**
Living Sq. Ft.: **602**
Land Sq. Ft.: **51,793**
Lanai Sq. Ft.: **0**
Sq. Ft. Other: **0**
Total Sq. Ft. **602**
Maint./Assoc. **\$541 / \$0**

MLS#: **202412325, LH**
Status: **Active**
List Date & DOM: **06-04-2024 & 23**
Condition: **Above Average**
Frontage:
Tax/Year: **\$97/2023**
Neighborhood: **Nuuanu-lower**
Flood Zone: Zone AE - Tool

Year Built: **1979**
Remodeled:
Total Parking: **1**
[Assessed Value](#)
Building: **\$298,900**
Land: **\$31,300**
Total: **\$330,200**
Stories / CPR: **21+ / No**

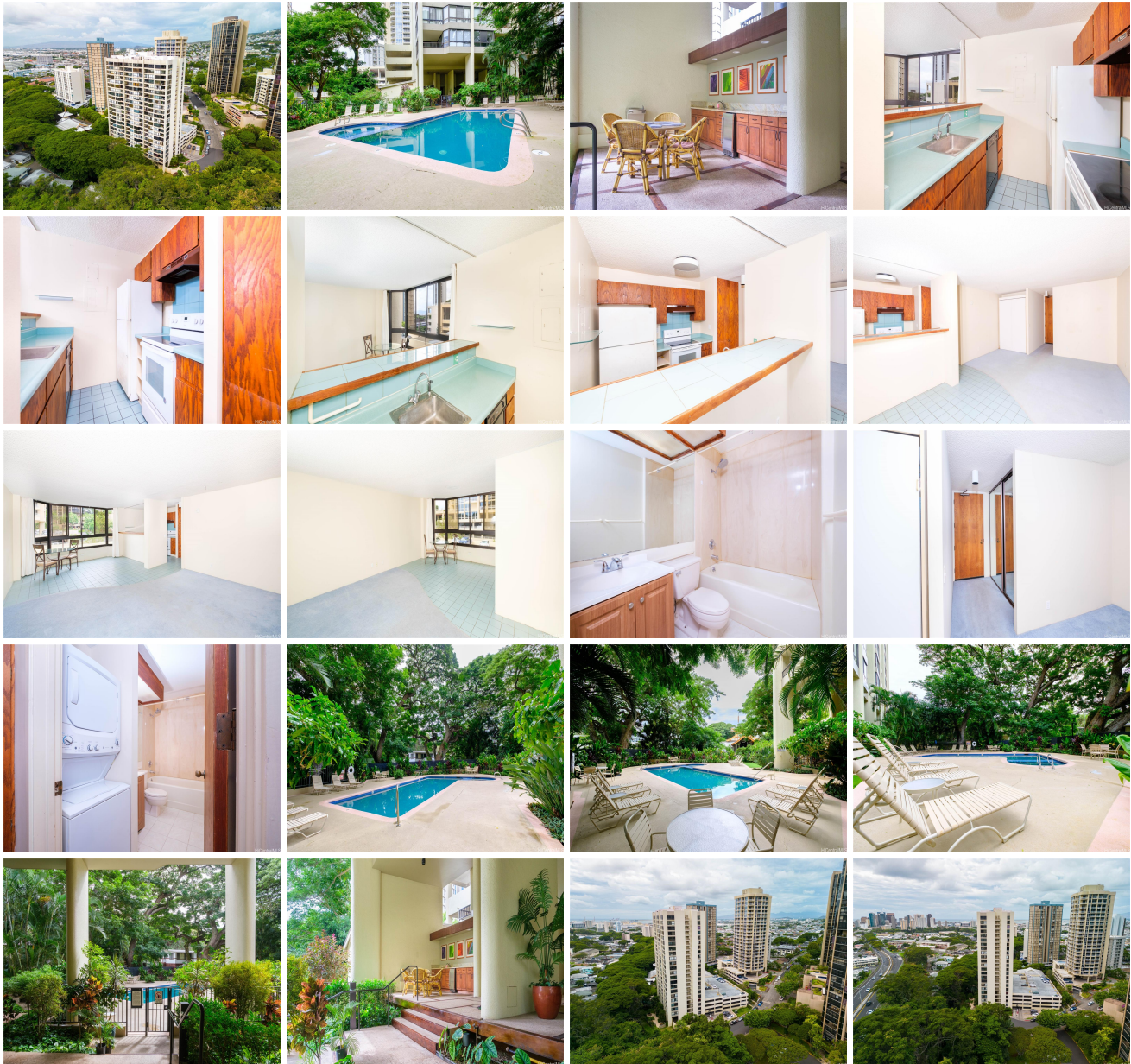
Parking: **Assigned, Covered - 1, Garage, Guest**

Frontage:

Zoning: 13 - A-3 High Density Apartment

View: **City, Mountain**

Public Remarks: Rarely available studio at Nuuanu Brookside. Lanai was previously incorporated into increased interior living space. Washer/dryer in unit. Enjoy the tranquil, lush landscaping surrounding this well maintained building, conveniently located only a few minutes from downtown Honolulu. Secured building with 24-hour security, ample guest parking and amenities galore including pool, hot tub, sauna, showers, fitness room, BBQ and recreation areas. Low lease rent with a long lease, expiration not until 2070. **Sale Conditions:** None **Schools:** , , * [Request Showing](#), [Photos](#), [History](#), [Maps](#), [Deed](#), [Watch List](#), [Tax Info](#)





Address	Price	Bd & Bth	Living / Avg.	Land Avg.	Lanai	Occ.	FL	DOM
55 S Judd Street 608	\$292,000 LH	0 & 1/0	602 \$485	51,793 \$6	0	56%	6	23

Address	Tax Maint. Ass.	Assessed Land	Assessed Building	Assessed Total	Ratio	Year & Remodeled
55 S Judd Street 608	\$97 \$541 \$0	\$31,300	\$298,900	\$330,200	88%	1979 & NA

[55 S Judd Street 608](#) - MLS#: [202412325](#) - Rarely available studio at Nuuanu Brookside. Lanai was previously incorporated into increased interior living space. Washer/dryer in unit. Enjoy the tranquil, lush landscaping surrounding this well maintained building, conveniently located only a few minutes from downtown Honolulu. Secured building with 24-hour security, ample guest parking and amenities galore including pool, hot tub, sauna, showers, fitness room, BBQ and recreation areas. Low lease rent with a long lease, expiration not until 2070. **Region:** Metro **Neighborhood:** Nuuanu-lower **Condition:** Above Average **Parking:** Assigned, Covered - 1, Garage, Guest **Total Parking:** 1 **View:** City, Mountain **Frontage:** **Pool:** **Zoning:** 13 - A-3 High Density Apartment **Sale Conditions:** None **Schools:** , , * [Request Showing](#), [Photos](#), [History](#), [Maps](#), [Deed](#), [Watch List](#), [Tax Info](#)

DOM = Days on Market, Occ. = Occupancy, FL = Floor Number