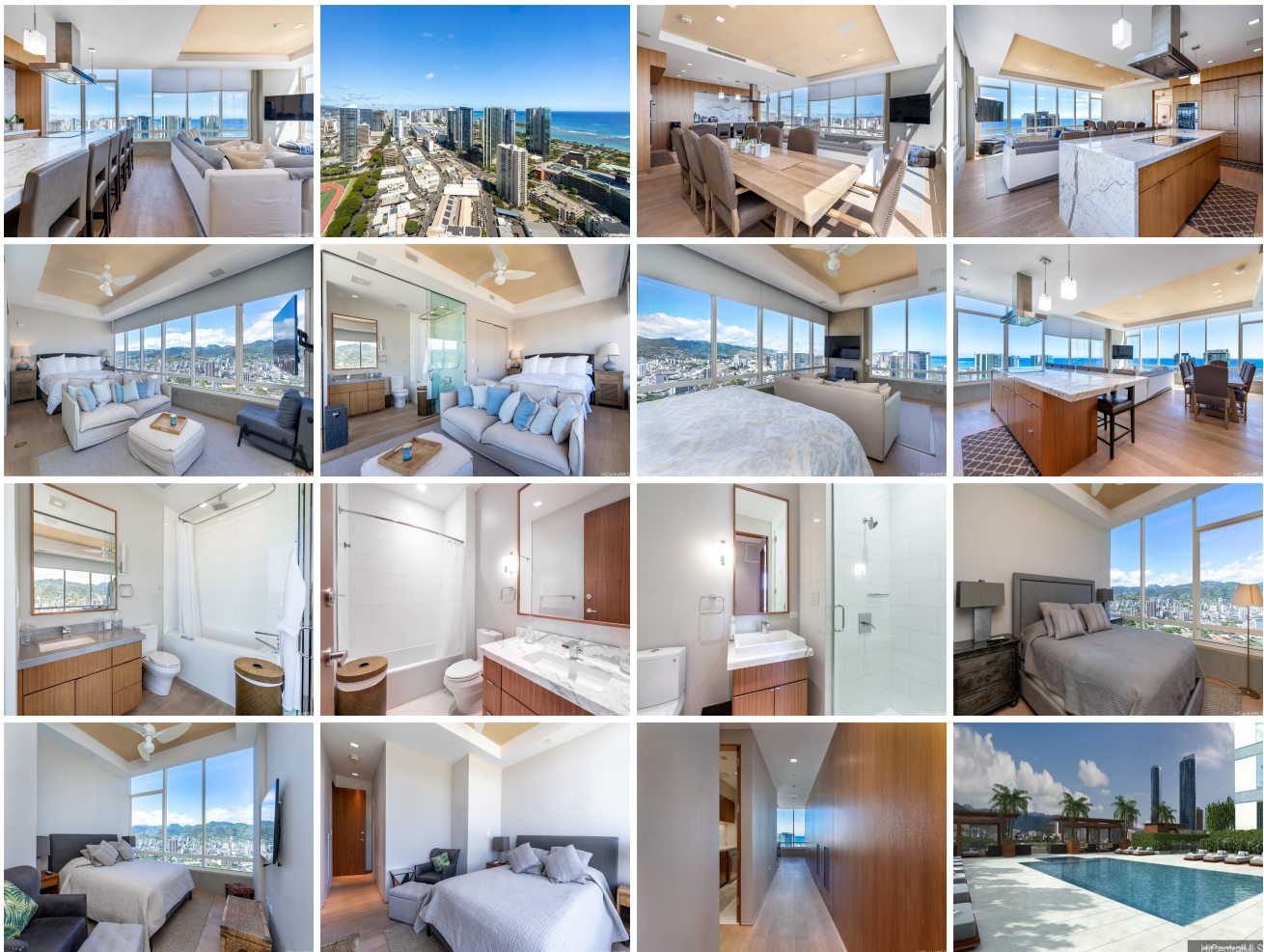


Pacifica Honolulu 1009 Kapiolani Boulevard Unit 4802, Honolulu 96814 * Pacifica Honolulu

*** \$3,350,000 * Originally \$3,200,000**

Beds: 4	MLS#: 202412376, FS	Year Built: 2011
Bath: 4/0	Status: Active	Remodeled:
Living Sq. Ft.: 2,558	List Date & DOM: 06-02-2024 & 28	Total Parking: 4
Land Sq. Ft.: 0	Condition: Excellent, Above Average	Assessed Value
Lanai Sq. Ft.: 0	Frontage:	Building: \$2,458,200
Sq. Ft. Other: 0	Tax/Year: \$1,880/2023	Land: \$169,400
Total Sq. Ft. 2,558	Neighborhood: Kakaako	Total: \$2,627,600
Maint./Assoc. \$3,200 / \$0	Flood Zone : Zone X - Tool	Stories / CPR: 21+ / No
Parking: Assigned, Covered - 3+, Secured Entry	Frontage:	
Zoning : Kak - Kakaako Community Development Project	View: City, Coastline, Diamond Head, Mountain, Ocean, Sunrise	

Public Remarks: Welcome home to your Penthouse at the Pacifica Honolulu. Enjoy an executive condominium that is furnished with 4 bedrooms, 4 bath, 4 parking, and storage! Spacious corner unit offering panoramic views from Diamond Head to the Honolulu Skyline and more. Watch the sunrise in the morning as you sip your coffee, then after a day out return home and watch the sunset and city lights while enjoying your dinner 48 floors above. The unit features not one but two primary bedrooms with en suite, central AC, marble countertops, wood flooring, a den, and separate laundry room. Furniture, televisions, linen and kitchenware are included. A resident manager and security are located in the lobby and smart elevators take you to your floor quickly. On weekends or evenings, head downstairs to the recreation area on the 5th floor for a swim in the pool, jacuzzi, BBQ, fitness center and theaters. Feeling hungry? *Chai's*, *Doraku*, and *Blue Tree Cafe* are located downstairs. Close to the *Blaisdell*, *Ala Moana Shopping Center* and *Beach, Waikiki, Ward* and the trendy neighborhood of *Kaka'ako*. Move in ready! **Sale Conditions:** None **Schools:** , , * [Request Showing](#), [Photos](#), [History](#), [Maps](#), [Deed](#), [Watch List](#), [Tax Info](#)





Address	Price	Bd & Bth	Living / Avg.	Land Avg.	Lanai	Occ.	FL	DOM
1009 Kapiolani Boulevard 4802	\$3,350,000	4 & 4/0	2,558 \$1,310	0 \$inf	0	55%	48	28

Address	Tax Maint. Ass.	Assessed Land	Assessed Building	Assessed Total	Ratio	Year & Remodeled
1009 Kapiolani Boulevard 4802	\$1,880 \$3,200 \$0	\$169,400	\$2,458,200	\$2,627,600	127%	2011 & NA

[1009 Kapiolani Boulevard 4802](#) - MLS#: [202412376](#) - Original price was \$3,200,000 - Welcome home to your Penthouse at the Pacifica Honolulu. Enjoy an executive condominium that is furnished with 4 bedrooms, 4 bath, 4 parking, and storage! Spacious corner unit offering panoramic views from Diamond Head to the Honolulu Skyline and more. Watch the sunrise in the morning as you sip your coffee, then after a day out return home and watch the sunset and city lights while enjoying your dinner 48 floors above. The unit features not one but two primary bedrooms with en suite, central AC, marble countertops, wood flooring, a den, and separate laundry room. Furniture, televisions, linen and kitchenware are included. A resident manager and security are located in the lobby and smart elevators take you to your floor quickly. On weekends or evenings, head downstairs to the recreation area on the 5th floor for a swim in the pool, jacuzzi, BBQ, fitness center and theaters. Feeling hungry? Chai's, Doraku, and Blue Tree Cafe are located downstairs. Close to the Blaisdell, Ala Moana Shopping Center and Beach, Waikiki, Ward and the trendy neighborhood of Kaka'ako. Move in ready! **Region:** Metro **Neighborhood:** Kakaako **Condition:** Excellent, Above Average **Parking:** Assigned, Covered - 3+, Secured Entry **Total Parking:** 4 **View:** City, Coastline, Diamond Head, Mountain, Ocean, Sunrise **Frontage:** **Pool:** **Zoning:** Kak - Kakaako Community Development Project **Sale Conditions:** None **Schools:** , , * [Request Showing](#), [Photos](#), [History](#), [Maps](#), [Deed](#), [Watch List](#), [Tax Info](#)

DOM = Days on Market, Occ. = Occupancy, FL = Floor Number