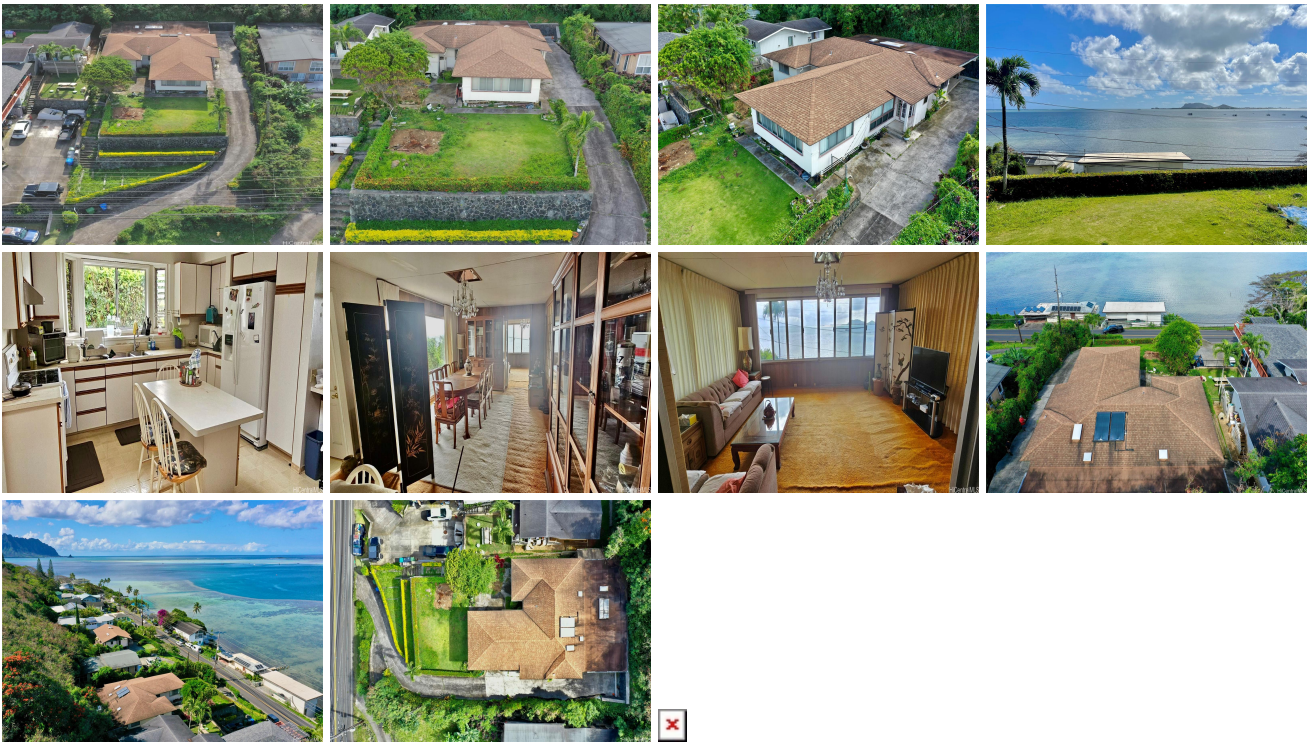


47-26 Kamehameha Highway, Kaneohe 96744 * * \$1,899,000

Beds: 4	MLS#: 202412384, FS	Year Built: 1983
Bath: 2/0	Status: Active	Remodeled:
Living Sq. Ft.: 1,824	List Date & DOM: 06-03-2024 & 25	Total Parking: 4
Land Sq. Ft.: 10,500	Condition: Average	Assessed Value
Lanai Sq. Ft.: 0	Frontage:	Building: \$413,400
Sq. Ft. Other: 0	Tax/Year: \$428/2023	Land: \$1,154,300
Total Sq. Ft. 1,824	Neighborhood: Heeia View	Total: \$1,567,700
Maint./Assoc. \$0 / \$0	Flood Zone : Zone D - Tool	Stories / CPR: One / No
Parking: 3 Car+, Carport	Frontage:	
Zoning : 03 - R10 - Residential District	View: Coastline, Ocean, Sunrise	

Public Remarks: Come fulfill your coastal dream! Perched on a tiered plot directly across the street from Kaneohe Bay. Rarely available in this location and highly sought-after, this gem offers spectacular ocean views of up to 180 degrees that will take your breath away. This elegant 4-bedroom, 2-bath home combines the convenience of being located close to schools and shopping centers with the tranquility of a secluded retreat. Step inside to discover a spacious living area with lots of potential. Add your own personal touches and make this home your own. Remodel, add on, or re-design it to suit your dreams. This home also contains an oversized covered carport with space for up to 4 vehicles. Don't miss your chance to experience coastal living at its finest. Schedule a viewing today!" **Sale Conditions:** None **Schools:** , [King, Castle](#) * [Request Showing, Photos, History, Maps, Deed, Watch List, Tax Info](#)



Address	Price	Bd & Bth	Living / Avg.	Land Avg.	Lanai	Occ.	FL	DOM
47-26 Kamehameha Highway	\$1,899,000	4 & 2/0	1,824 \$1,041	10,500 \$181	0	0%	0	25

Address	Tax Maint. Ass.	Assessed Land	Assessed Building	Assessed Total	Ratio	Year & Remodeled
47-26 Kamehameha Highway	\$428 \$0 \$0	\$1,154,300	\$413,400	\$1,567,700	121%	1983 & NA

[47-26 Kamehameha Highway](#) - MLS#: [202412384](#) - Come fulfill your coastal dream! Perched on a tiered plot directly across the street from Kaneohe Bay. Rarely available in this location and highly sought-after, this gem offers spectacular ocean views of up to 180 degrees that will take your breath away. This elegant 4-bedroom, 2-bath home combines the convenience of being located close to schools and shopping centers with the tranquility of a secluded retreat. Step inside to discover a spacious living area with lots of potential. Add your own personal touches and make this home your own. Remodel, add on, or re-design it to suit your dreams. This home also contains an oversized covered carport with space for up to 4 vehicles. Don't miss your chance to experience coastal living at its finest. Schedule a viewing today!" **Region:** Kaneohe **Neighborhood:** Heeia View **Condition:** Average **Parking:** 3 Car+, Carport **Total Parking:** 4 **View:** Coastline, Ocean, Sunrise **Frontage:** **Pool:** None **Zoning:** 03 - R10 - Residential District **Sale Conditions:** None **Schools:** , [King, Castle](#) * [Request Showing, Photos, History, Maps, Deed, Watch List, Tax Info](#)

DOM = Days on Market, Occ. = Occupancy, FL = Floor Number