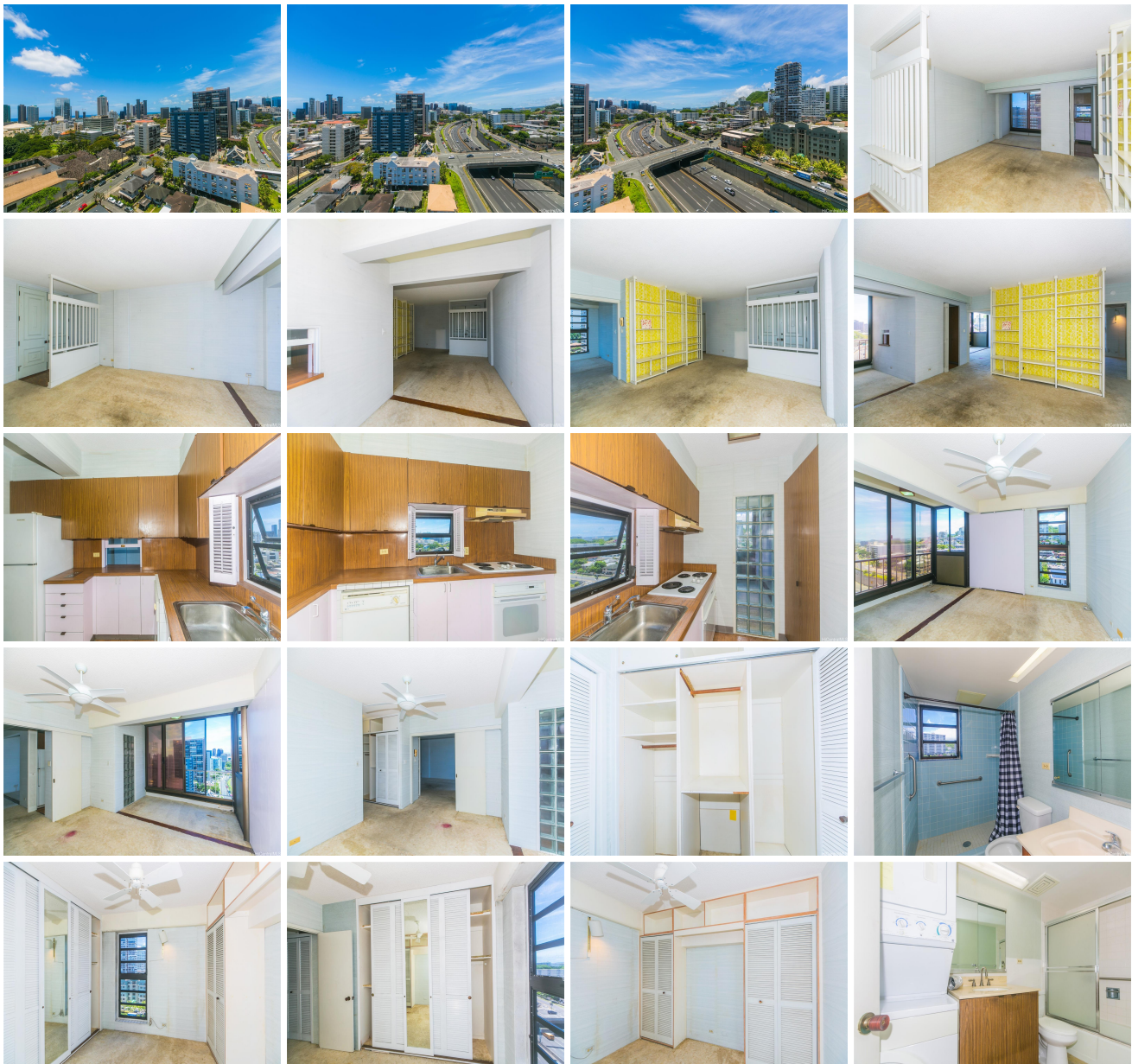


Coronet 1314 Victoria Street Unit 1404, Honolulu 96814 * \$199,000 * Originally \$225,000

Beds: 2	MLS#: 202412424, LH	Year Built: 1971
Bath: 2/0	Status: Active	Remodeled:
Living Sq. Ft.: 1,167	List Date & DOM: 06-03-2024 & 44	Total Parking: 1
Land Sq. Ft.: 32,365	Condition: Fair	Assessed Value
Lanai Sq. Ft.: 0	Frontage:	Building: \$435,500
Sq. Ft. Other: 0	Tax/Year: \$29/2023	Land: \$87,300
Total Sq. Ft. 1,167	Neighborhood: Punchbowl Area	Total: \$522,800
Maint./Assoc. \$680 / \$0	Flood Zone : Zone X - Tool	Stories / CPR: / No
Parking: Assigned, Open - 1	Frontage:	
Zoning : 12 - A-2 Medium Density Apartme	View: City, Mountain	

Public Remarks: Leasehold property with low lease rent of \$35.22 per month until 3/31/2029. Lease expires 2044. Fee simple interest available for purchase for \$300,000. AMAZING VALUE...2 bedroom/2 bath/1 parking with 1167 sf in town for 199K!! Welcome to the highly sought-after "Coronet" and this rarely available corner unit boasting 9ft ceilings, double door entry and large floor to ceiling windows letting generous amounts of natural light in. Remodel this unit to your liking and personal touches. In original condition. Ideally located in the center of Honolulu offering endless options for shopping, dining and entertainment. Allowing easy freeway access, convenience to bus lines and close proximity to medical facilities. Secure building with only 4 units per floor and an on-site resident manage. Washer and dryer in the unit, additional oversized storage just outside your front door, enclosed lanai and an assigned parking stall. Being sold strictly as-is, seller will not make any repairs or credits. Don't miss out, this is the one you've been waiting for. **Sale Conditions:** None **Schools:** , , * [Request Showing, Photos, History, Maps, Deed, Watch List, Tax Info](#)





Address	Price	Bd & Bth	Living / Avg.	Land Avg.	DOM
1314 Victoria Street 1404	\$199,000 LH	2 & 2/0	1,167 \$171	32,365 \$6	44

Address	Tax Maint. Ass.	Assessed Land	Assessed Building	Assessed Total	Ratio	Year & Remodeled
1314 Victoria Street 1404	\$29 \$680 \$0	\$87,300	\$435,500	\$522,800	38%	1971 & NA

[1314 Victoria Street 1404](#) - MLS#: [202412424](#) - Original price was \$225,000 - Leasehold property with low lease rent of \$35.22 per month until 3/31/2029. Lease expires 2044. Fee simple interest available for purchase for \$300,000. AMAZING VALUE...2 bedroom/2 bath/1 parking with 1167 sf in town for 199K!! Welcome to the highly sought-after "Coronet" and this rarely available corner unit boasting 9ft ceilings, double door entry and large floor to ceiling windows letting generous amounts of natural light in. Remodel this unit to your liking and personal touches. In original condition. Ideally located in the center of Honolulu offering endless options for shopping, dining and entertainment. Allowing easy freeway access, convenience to bus lines and close proximity to medical facilities. Secure building with only 4 units per floor and an on-site resident manage. Washer and dryer in the unit, additional oversized storage just outside your front door, enclosed lanai and an assigned parking stall. Being sold strictly as-is, seller will not make any repairs or credits. Don't miss out, this is the one you've been waiting for. **Region:** Metro **Neighborhood:** Punchbowl Area **Condition:** Fair **Parking:** Assigned, Open - 1 **Total Parking:** 1 **View:** City, Mountain **Frontage:** **Pool:** **Zoning:** 12 - A-2 Medium Density Apartme **Sale Conditions:** None **Schools:** , , * [Request Showing](#), [Photos](#), [History](#), [Maps](#), [Deed](#), [Watch List](#), [Tax Info](#)

DOM = Days on Market