

Monte Vista 320 Liliuokalani Avenue Unit 1703, Honolulu 96815 * Monte Vista * \$480,000

Beds: **2**
 Bath: **1/0**
 Living Sq. Ft.: **834**
 Land Sq. Ft.: **14,244**
 Lanai Sq. Ft.: **0**
 Sq. Ft. Other: **0**
 Total Sq. Ft. **834**
 Maint./Assoc. **\$1,396 / \$0**

MLS#: **202412429, FS**
 Status: **Active**
 List Date & DOM: **06-07-2024 & 20**
 Condition: **Average**
 Frontage:
 Tax/Year: **\$108/2024**
 Neighborhood: **Waikiki**
Flood Zone: Zone AE - Tool

Year Built: **1978**
 Remodeled:
 Total Parking: **1**
Assessed Value
 Building: **\$434,700**
 Land: **\$64,100**
 Total: **\$498,800**
 Stories / CPR: **One / No**

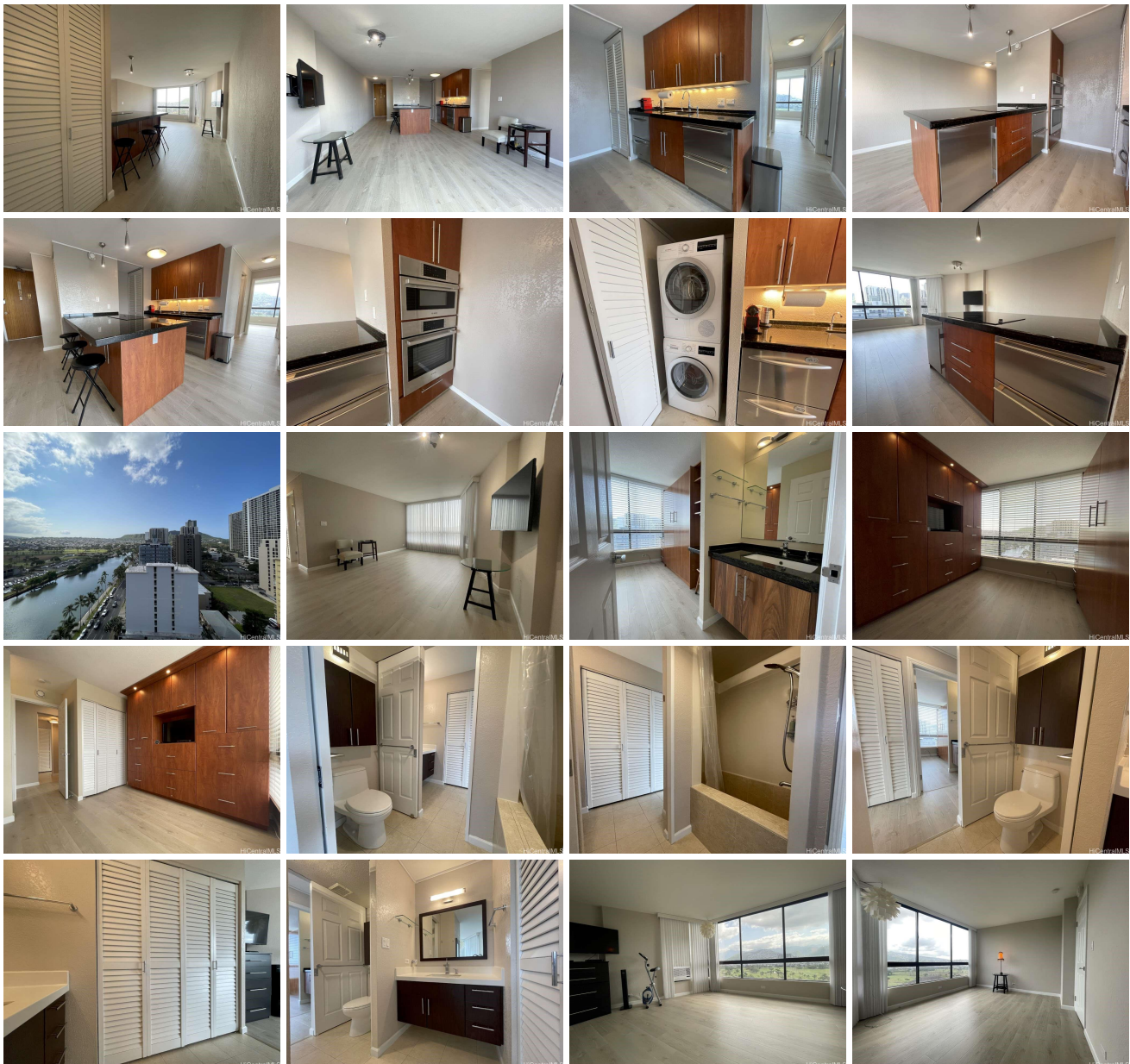
Parking: **Assigned, Covered - 1**

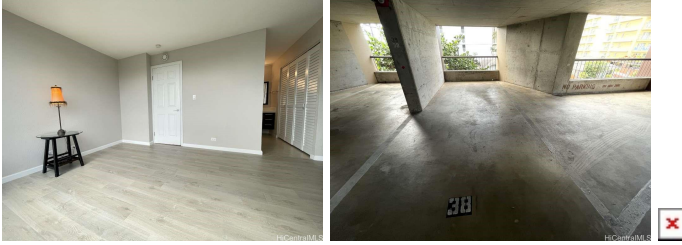
Zoning: X2 - Apartment Precinct

Frontage:

View: **Diamond Head**

Public Remarks: Monte Vista: 2 bedroom, 1 bath, 1 assigned covered parking. Partly furnished with Bosch appliances microwave, oven, and electric stove top. Under counter double drawer refrigerator, sub zero mini refrigerator, and sub zero under counter double drawer freezer. Custom wall cabinets and murphy bed. Approximately 834 sq ft. living area. Freshly painted. Ceramic and new laminate flooring. Window AC unit in the primary bedroom. Stackable washer and dryer. Maintenance fee includes cable tv, internet, water and sewer. **Sale Conditions:** None **Schools:** , * [Request Showing](#), [Photos](#), [History](#), [Maps](#), [Deed](#), [Watch List](#), [Tax Info](#)





Address	Price	Bd & Bth	Living / Avg.	Land Avg.	Lanai	Occ.	FL	DOM
320 Liliuokalani Avenue 1703	\$480,000	2 & 1/0	834 \$576	14,244 \$34	0	32%	17	20

Address	Tax Maint. Ass.	Assessed Land	Assessed Building	Assessed Total	Ratio	Year & Remodeled
320 Liliuokalani Avenue 1703	\$108 \$1,396 \$0	\$64,100	\$434,700	\$498,800	96%	1978 & NA

[320 Liliuokalani Avenue 1703](#) - MLS#: [202412429](#) - Monte Vista: 2 bedroom, 1 bath, 1 assigned covered parking. Partly furnished with Bosch appliances microwave, oven, and electric stove top. Under counter double drawer refrigerator, sub zero mini refrigerator, and sub zero under counter double drawer freezer. Custom wall cabinets and murphy bed. Approximately 834 sq ft. living area. Freshly painted. Ceramic and new laminate flooring. Window AC unit in the primary bedroom. Stackable washer and dryer. Maintenance fee includes cable tv, internet, water and sewer. **Region:** Metro **Neighborhood:** Waikiki **Condition:** Average **Parking:** Assigned, Covered - 1 **Total Parking:** 1 **View:** Diamond Head **Frontage:** **Pool:** **Zoning:** X2 - Apartment Precinct **Sale Conditions:** None **Schools:** , , * [Request Showing](#), [Photos](#), [History](#), [Maps](#), [Deed](#), [Watch List](#), [Tax Info](#)

DOM = Days on Market, Occ. = Occupancy, FL = Floor Number