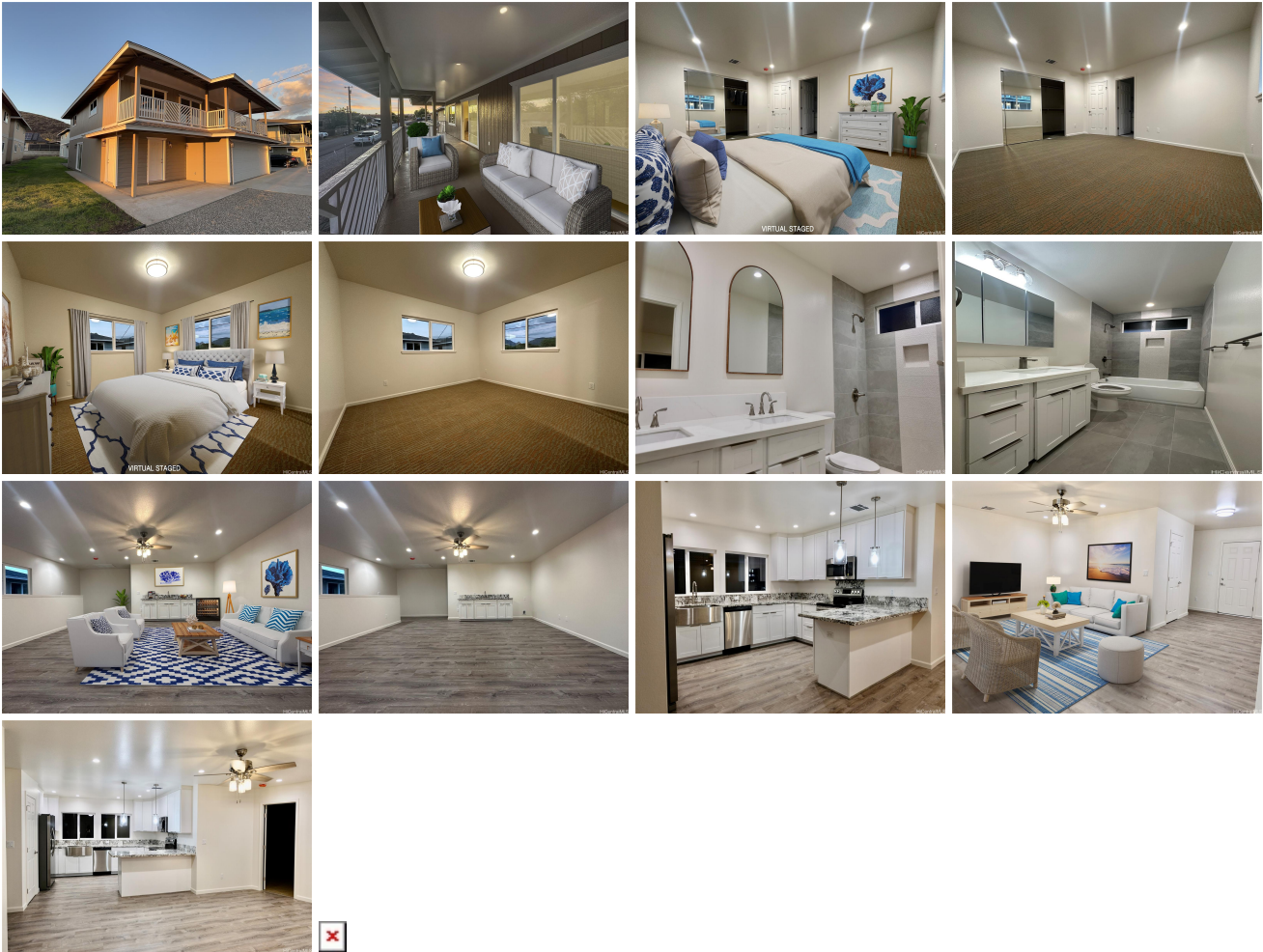


87-184 Kulaaupuni Street Unit 2, Waianae 96792 * \$899,999

Beds: 4	MLS#: 202412459, FS	Year Built: 2023
Bath: 2/1	Status: Active	Remodeled:
Living Sq. Ft.: 2,724	List Date & DOM: 06-11-2024 & 18	Total Parking: 2
Land Sq. Ft.: 4,035	Condition: Excellent	Assessed Value
Lanai Sq. Ft.: 0	Frontage:	Building: \$541,500
Sq. Ft. Other: 0	Tax/Year: \$203/2023	Land: \$433,200
Total Sq. Ft. 2,724	Neighborhood: Mailli	Total: \$974,700
Maint./Assoc. \$0 / \$0	Flood Zone : Zone X - Tool	Stories / CPR: Two / Yes
Parking: 2 Car, Garage	Frontage:	
Zoning : 05 - R-5 Residential District	View: Mountain	

Public Remarks: Welcome to Mailli Gardens a new development built in 2023. This stunning two-story offers 4 bedrooms, 2.5 baths. The home offers spacious living, generously sized bedrooms and living areas provide ample space for relaxation and entertainment. A cozy family room w/ wet bar overlooking a lanai for outdoor enjoyment. Modern amenities throughout the home include luxury vinyl plank flooring, a modern kitchen, stainless steel appliances, granite countertops, plenty of storage with an oversized farmers sink, recessed lighting & central AC. The primary bedroom is conveniently situated on the ground floor; featuring a private bathroom and huge walk-in closet. Located near schools, shopping, parks, and minutes away from beaches. Agents & buyers to perform own due diligence & confirm all pertinent information and material facts. Vacant and easy to show. Please use Showing time to schedule appointments. **Sale Conditions:** None **Schools:** , , * [Request Showing](#), [Photos](#), [History](#), [Maps](#), [Deed](#), [Watch List](#), [Tax Info](#)



Address	Price	Bd & Bth	Living / Avg.	Land Avg.	DOM
87-184 Kulaaupuni Street 2	\$899,999	4 & 2/1	2,724 \$330	4,035 \$223	18

Address	Tax Maint. Ass.	Assessed Land	Assessed Building	Assessed Total	Ratio	Year & Remodeled
87-184 Kulaaupuni Street 2	\$203 \$0 \$0	\$433,200	\$541,500	\$974,700	92%	2023 & NA

[87-184 Kulaaupuni Street 2](#) - MLS#: [202412459](#) - Welcome to Maili Gardens a new development built in 2023. This stunning two-story offers 4 bedrooms, 2.5 baths. The home offers spacious living, generously sized bedrooms and living areas provide ample space for relaxation and entertainment. A cozy family room w/ wet bar overlooking a lanai for outdoor enjoyment. Modern amenities throughout the home include luxury vinyl plank flooring, a modern kitchen, stainless steel appliances, granite countertops, plenty of storage with an oversized farmers sink, recessed lighting & central AC. The primary bedroom is conveniently situated on the ground floor; featuring a private bathroom and huge walk-in closet. Located near schools, shopping, parks, and minutes away from beaches. Agents & buyers to perform own due diligence & confirm all pertinent information and material facts. Vacant and easy to show. Please use Showing time to schedule appointments. **Region:** Leeward **Neighborhood:** Maili **Condition:** Excellent **Parking:** 2 Car, Garage **Total Parking:** 2 **View:** Mountain **Frontage:** **Pool:** None **Zoning:** 05 - R-5 Residential District **Sale Conditions:** None **Schools:** , , * [Request Showing](#), [Photos](#), [History](#), [Maps](#), [Deed](#), [Watch List](#), [Tax Info](#)

DOM = Days on Market