

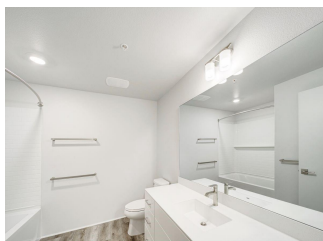
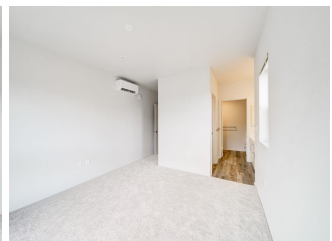
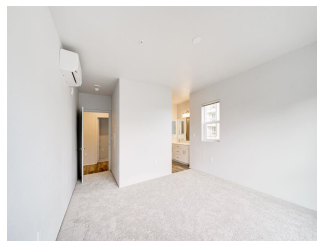
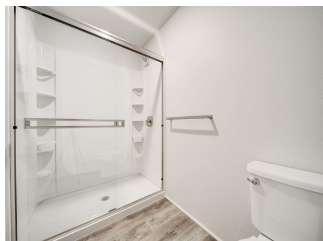
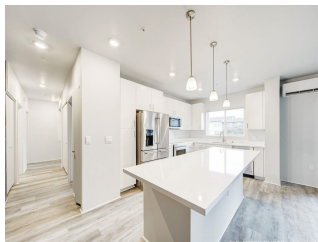
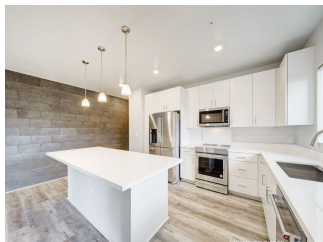
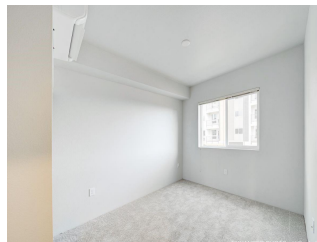
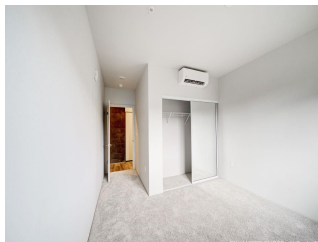
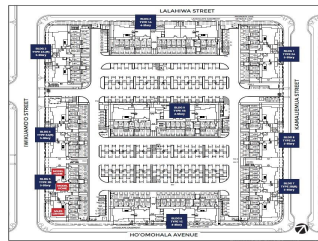
Nahele at Hoopili 91-3641 IWIKUAMOO Street Unit 2111, Ewa Beach 96706 * Nahele at

Hoopili * \$721,075

Beds: 3 Bath: 2/0 Living Sq. Ft.: 1,230 Land Sq. Ft.: 0 Lanai Sq. Ft.: 0 Sq. Ft. Other: 0 Total Sq. Ft. 1,230 Maint./Assoc. \$491 / \$78 Parking: Garage, Open - 1 Zoning: 17 - AMX-2 Medium Density Apt M	MLS#: 202412486, FS Status: Active List Date & DOM: 06-04-2024 & 23 Condition: Excellent Frontage: Other Tax/Year: \$0/0 Neighborhood: Hoopili-nahele Flood Zone: Zone D - Tool	Year Built: 2023 Remodeled: Total Parking: 2 Assessed Value Building: \$0 Land: \$0 Total: \$0 Stories / CPR: 4-7 / No Frontage: Other View: Other
---	--	---

Public Remarks: This single-level 3 Bedroom / 2 bath condominium consists of a spacious living area. The open floor plan with a kitchen island provides for convenient everyday living as well as a backdrop for entertaining. Guests are likely to comment on the cosmopolitan concrete masonry block wall in the main room that adds a chic urban design element. From the living room, step out to the covered lanai to relax and take in the fresh air. First-floor residences include a private yard. The primary bedroom features a walk-in closet and ensuite bathroom with dual sinks and a shower. The second bathroom features a full-size bathtub. This corner unit provides for additional windows and sunlight. Air conditioning and modern appliances including a range/oven, micro-hood, dishwasher, refrigerator, and washer/dryer allow for ease of living. Just a block from the Hoopili rail station. Community complete with a pool, parks, dog park, soccer fields, and more! **Sale**

Conditions: None **Schools:** [Ewa](#), [Honouliuli](#), [Kapolei](#) * [Request Showing](#), [Photos](#), [History](#), [Maps](#), [Deed](#), [Watch List](#), [Tax Info](#)





Address	Price	Bd & Bth	Living / Avg.	Land Avg.	Lanai	Occ.	FL	DOM
91-3641 IWIKUAMOO Street 2111	\$721,075	3 & 2/0	1,230 \$586	0 \$inf	0	84%	1	23

Address	Tax Maint. Ass.	Assessed Land	Assessed Building	Assessed Total	Ratio	Year & Remodeled
91-3641 IWIKUAMOO Street 2111	\$0 \$491 \$78	\$0	\$0	\$0	inf%	2023 & NA

[91-3641 IWIKUAMOO Street 2111](#) - MLS#: [202412486](#) - This single-level 3 Bedroom / 2 bath condominium consists of a spacious living area. The open floor plan with a kitchen island provides for convenient everyday living as well as a backdrop for entertaining. Guests are likely to comment on the cosmopolitan concrete masonry block wall in the main room that adds a chic urban design element. From the living room, step out to the covered lanai to relax and take in the fresh air. First-floor residences include a private yard. The primary bedroom features a walk-in closet and ensuite bathroom with dual sinks and a shower. The second bathroom features a full-size bathtub. This corner unit provides for additional windows and sunlight. Air conditioning and modern appliances including a range/oven, micro-hood, dishwasher, refrigerator, and washer/dryer allow for ease of living. Just a block from the Hoopili rail station. Community complete with a pool, parks, dog park, soccer fields, and more! **Region:** Ewa Plain **Neighborhood:** Hoopili-nahele **Condition:** Excellent **Parking:** Garage, Open - 1 **Total Parking:** 2 **View:** Other **Frontage:** Other **Pool:** **Zoning:** 17 - AMX-2 Medium Density Apt M **Sale Conditions:** None **Schools:** [Ewa](#), [Honouliuli](#), [Kapolei](#) * [Request Showing](#), [Photos](#), [History](#), [Maps](#), [Deed](#), [Watch List](#), [Tax Info](#)

DOM = Days on Market, Occ. = Occupancy, FL = Floor Number