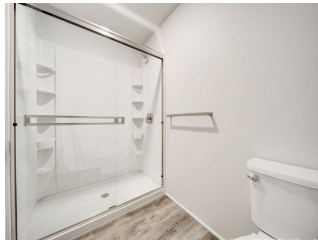
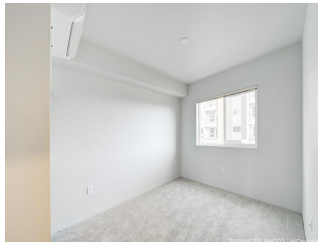
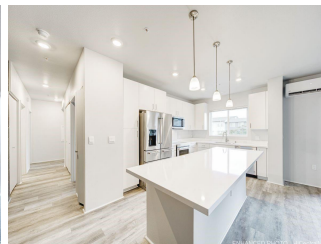
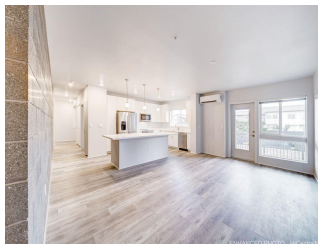
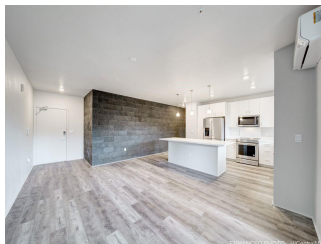
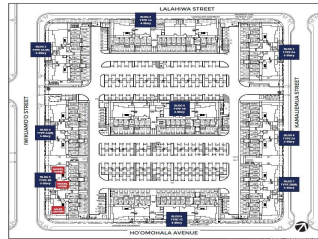


Nahele at Hoopili 91-3641 IWIKUAMOO Street Unit 9301, Ewa Beach 96706 * Nahele at

Hoopili * \$680,055

Beds: 3	MLS#: 202412488, FS	Year Built: 2024
Bath: 2/0	Status: Active	Remodeled:
Living Sq. Ft.: 1,231	List Date & DOM: 06-04-2024 & 24	Total Parking: 2
Land Sq. Ft.: 0	Condition: Excellent	Assessed Value
Lanai Sq. Ft.: 0	Frontage: Other	Building: \$0
Sq. Ft. Other: 0	Tax/Year: \$0/0	Land: \$0
Total Sq. Ft. 1,231	Neighborhood: Hoopili-nahele	Total: \$0
Maint./Assoc. \$492 / \$78	Flood Zone : Zone D - Tool	Stories / CPR: 4-7 / No
Parking: Assigned, Garage, Open - 1	Frontage: Other	
Zoning : 17 - AMX-2 Medium Density Apt M	View: Other	

Public Remarks: This single-level 3 Bedroom / 2 bath condominium consists of a spacious living area. The open floor plan with a kitchen island provides for convenient everyday living as well as a backdrop for entertaining. Guests are likely to comment on the cosmopolitan concrete masonry block wall in the main room that adds a chic urban design element. From the living room, step out to the covered lanai to relax and take in the fresh air. First-floor residences include a private yard. The primary bedroom features a walk-in closet and ensuite bathroom with dual sinks and a shower. The second bathroom features a full-size bathtub. This corner unit provides for additional windows and sunlight. Air conditioning and modern appliances including a range/oven, micro-hood, dishwasher, refrigerator, and washer/dryer allow for ease of living. Community complete with a pool, parks, dog park, soccer fields, and more! **Sale Conditions:** None **Schools:** , , * [Request Showing, Photos, History, Maps, Deed, Watch List, Tax Info](#)





Address	Price	Bd & Bth	Living / Avg.	Land Avg.	Lanai	Occ.	FL	DOM
91-3641 IWIKUAMOO Street 9301	\$680,055	3 & 2/0	1,231 \$552	0 \$inf	0	88%	3	24

Address	Tax Maint. Ass.	Assessed Land	Assessed Building	Assessed Total	Ratio	Year & Remodeled
91-3641 IWIKUAMOO Street 9301	\$0 \$492 \$78	\$0	\$0	\$0	inf%	2024 & NA

[91-3641 IWIKUAMOO Street 9301](#) - MLS#: [202412488](#) - This single-level 3 Bedroom / 2 bath condominium consists of a spacious living area. The open floor plan with a kitchen island provides for convenient everyday living as well as a backdrop for entertaining. Guests are likely to comment on the cosmopolitan concrete masonry block wall in the main room that adds a chic urban design element. From the living room, step out to the covered lanai to relax and take in the fresh air. First-floor residences include a private yard. The primary bedroom features a walk-in closet and ensuite bathroom with dual sinks and a shower. The second bathroom features a full-size bathtub. This corner unit provides for additional windows and sunlight. Air conditioning and modern appliances including a range/oven, micro-hood, dishwasher, refrigerator, and washer/dryer allow for ease of living. Community complete with a pool, parks, dog park, soccer fields, and more! **Region:** Ewa Plain
Neighborhood: Hoopili-nahele **Condition:** Excellent **Parking:** Assigned, Garage, Open - 1 **Total Parking:** 2 **View:** Other
Frontage: Other **Pool:** **Zoning:** 17 - AMX-2 Medium Density Apt M **Sale Conditions:** None **Schools:** , , * [Request Showing](#),
[Photos](#), [History](#), [Maps](#), [Deed](#), [Watch List](#), [Tax Info](#)

DOM = Days on Market, Occ. = Occupancy, FL = Floor Number